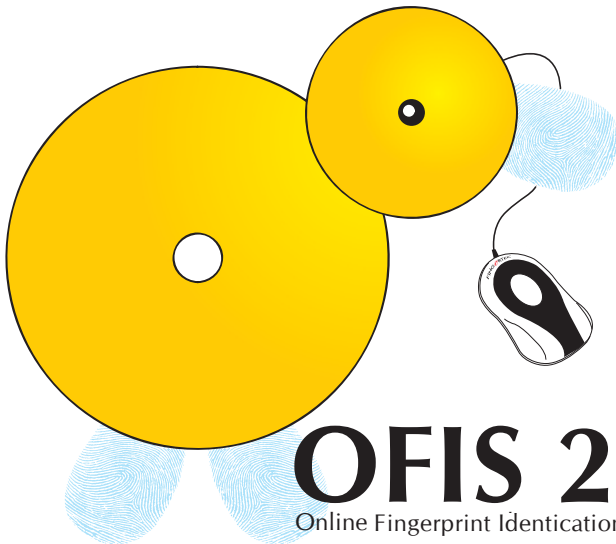


*FINGERTEC*



# OFIS 2.0

Online Fingerprint Identification System

# CONTENTS

## **3 CHAPTER 2 • WELCOME TO OFIS 2.0**

### **4-11 CHAPTER 2 • INSTALLING OFIS**

- Understanding the OFIS Scanner
- Understanding OFIS Client
- OFIS Scanner Installation
- OFIS Client Installation
- Connecting OFIS Scanner
- Registering Fingerprint in OFIS
- Verifying Fingerprint in OFIS

## **12 CHAPTER 3 • IMPORTANT PRODUCT INFORMATION GUIDE**

# 1 • WELCOME TO OFIS 2.0

OFIS or Online Fingerprint Identification System is a simple desktop tool for system integrators to employ fingerprint data for usage in their developed applications.

This user guide provides detailed instructions on how to operate OFIS successfully.

## **OFIS MANUAL ONLINE**

Get a copy of OFIS Manual online at <http://tips.fingertec.com>

## **OFIS WEBSITE/RESOURCE CENTER**

Go to <http://tips.fingertec.com> for detailed information about OFIS

## **OFIS EMAIL SUPPORT**

Send your email to [ofis@fingertec.com](mailto:ofis@fingertec.com) for a prompt response. Our system will respond to you within 12 hours.

## **OFIS FEEDBACK**

Information in this guide has been thoroughly reviewed and tested by FingerTec team of experts. If you find any errors or you have any suggestions for our improvements, please write an email to us at [ofis@fingertec.com](mailto:ofis@fingertec.com)

## **OFIS EMAIL SUPPORT**

Please email your support questions to [ofis@fingertec.com](mailto:ofis@fingertec.com) for a prompt reply.

## 2 • INSTALLING OFIS

Two parts of installation are required for OFIS and this chapter explains on how to install the scanner and the client in your computer.

### Understanding the OFIS Scanner

With the capture area of only 8.7 x 5.8 x 2.4cm, the OFIS Scanner is a small device to capture a fingerprint template via a desktop. It is compatible with USB1.0, 1.1 and 2.0 and it operates on MS Windows and Windows 7.

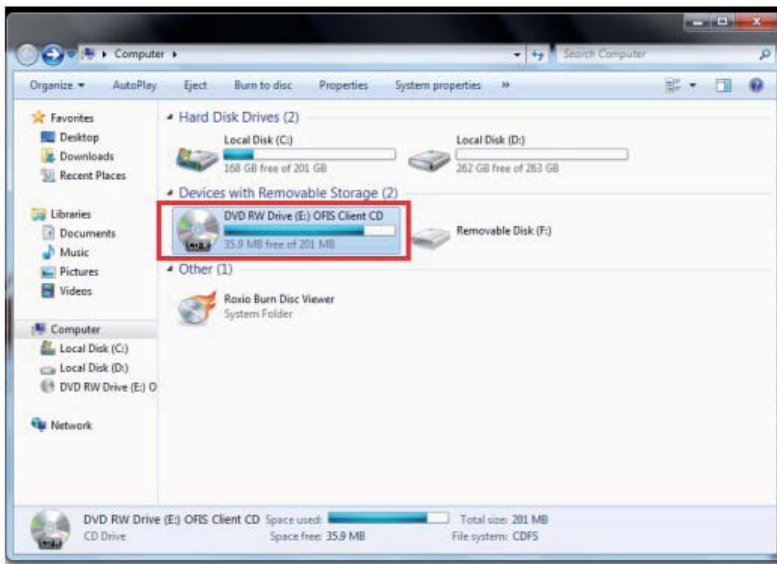
### Understanding OFIS Client

The OFIS Client allows identification and verification of fingerprint to be done remotely through Internet, Intranet, WAN, or LAN. There is no restriction of user capacity as all user information are stored in a PC or a server. Hence the total user capacity for OFIS depends on the hard drive capacity of the PC or the server. The OFIS Client also provides the following functions:

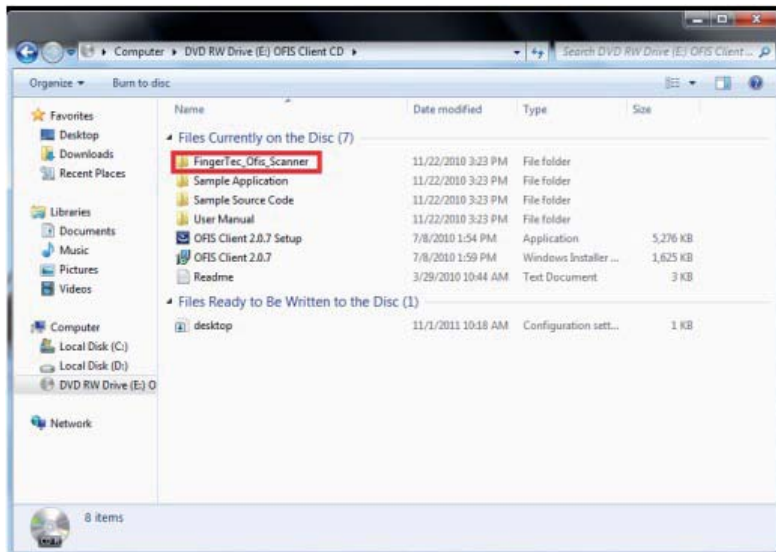
- FingerTec OFIS Scanner Initialization and threshold configuration.
- Export of fingerprint template into JPG & BMP format
- Import of fingerprint image into JPG & BMP to Fingerprint template.
- Return the Finger Index once the registration process is completed.
- Fingerprint template's encrypt and decrypt function. It uses the blowfish algorithm.
- Multiple finger enrollment at one time.
- Supports the New FingerTec OFIS Scanner.

# OFIS Scanner Installation

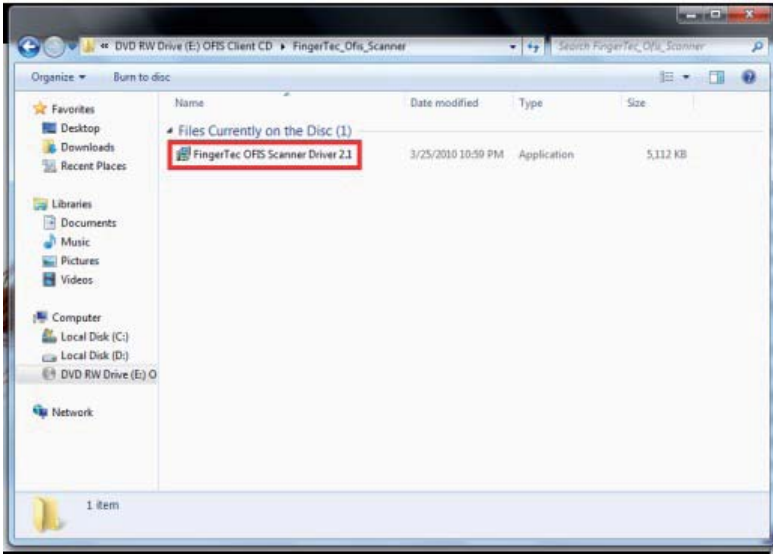
1. Run the minidisk provided in the OFIS package



2. The OFIS Scanner driver is available in FingerTec\_OFIS\_Scanner Folder.



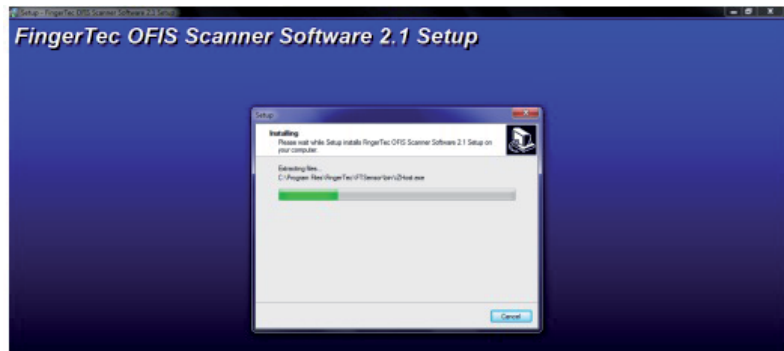
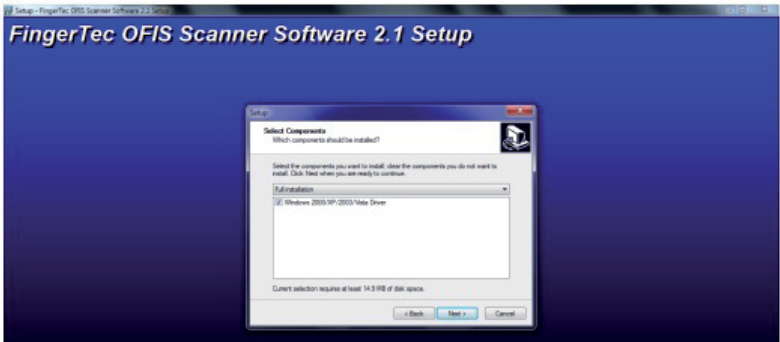
3. Inside the folder, you will find the **FingerTec OFIS Scanner Software 2.1 setup.exe** file. Run the file.



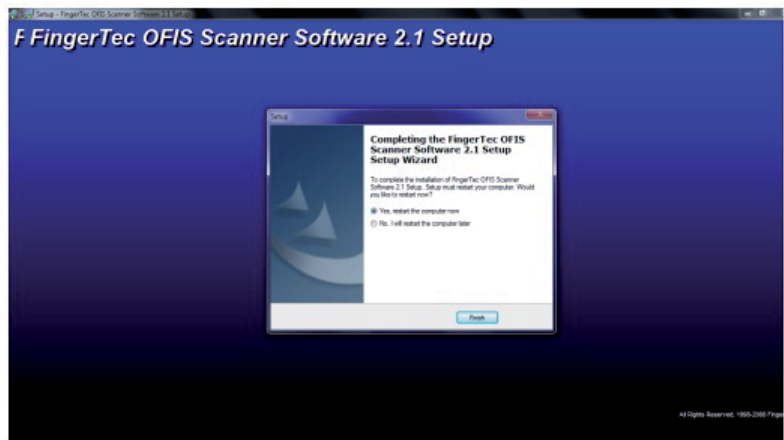
4. The installation process will begin.



5. Follow the installation steps to complete the installation.

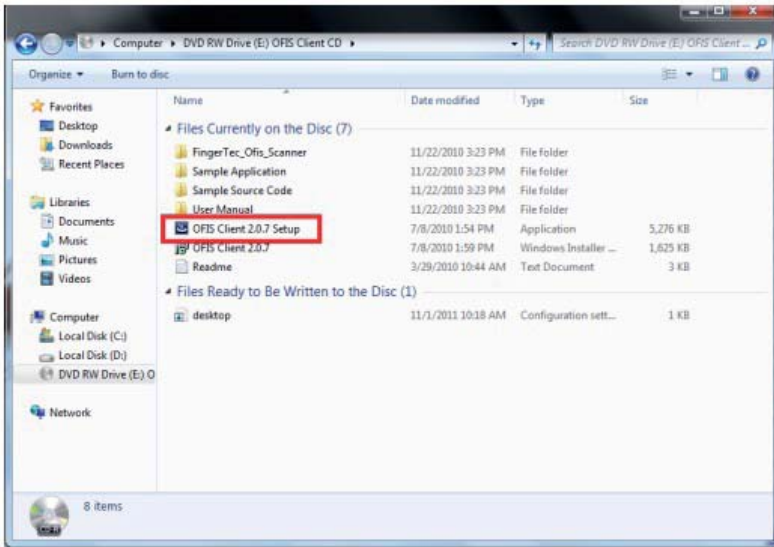


6. Restart the computer once the installation is completed.

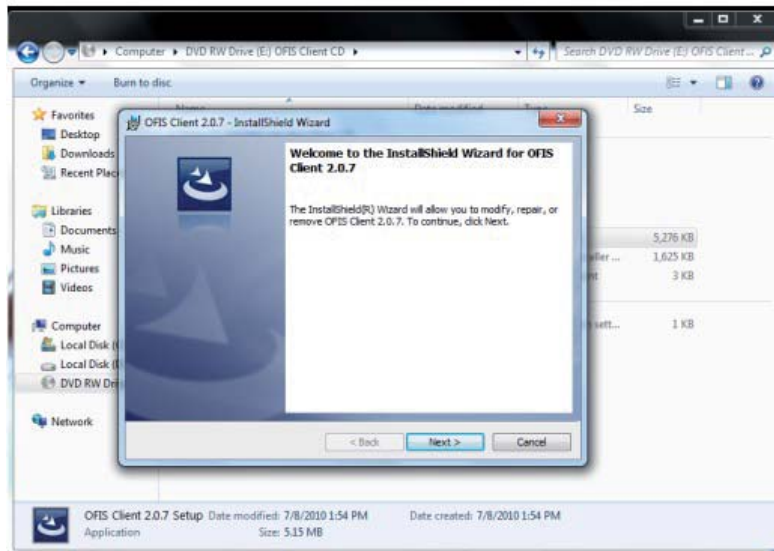


# OFIS Client Installation

1. In the same mindisk, locate the file named **OFIS Client 2.0.7 Setup.exe** at the root directory of the CD-ROM

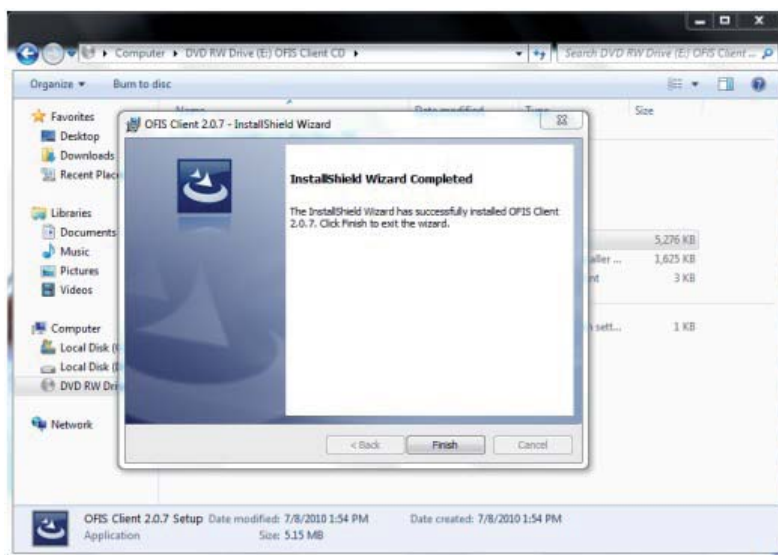


2. Run the file and the installation process will begin automatically.





3. Follow the installations until completion.

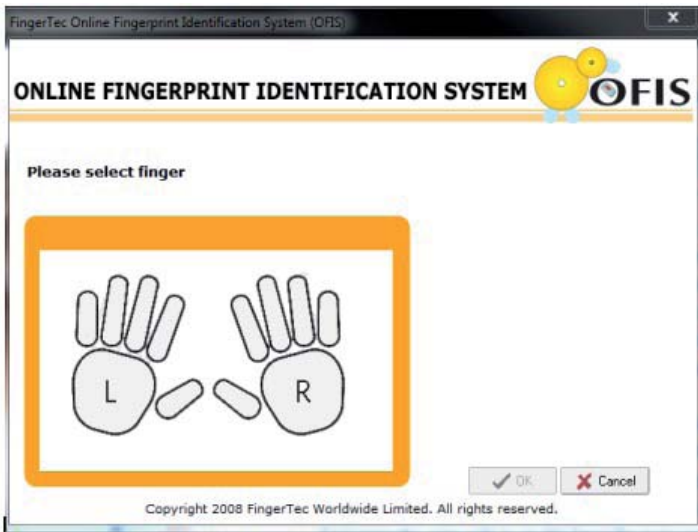


## Connecting OFIS Scanner

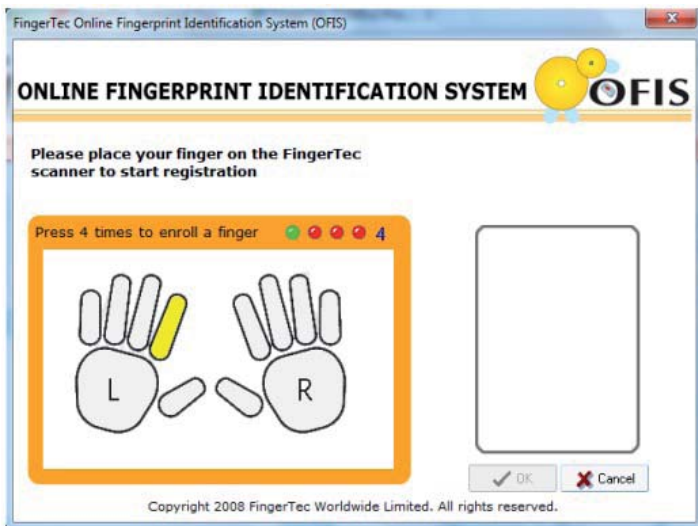
The OFIS Scanner links to a computer or a laptop through the USB Cable. Locate the USB port of your computer and plug in the OFIS Scanner. When you use the OFIS Scanner for the first time, the screen will prompt for the FingerTec OFIS Scanner Activation code. The activation code is located at the bottom of the FingerTec OFIS Scanner. Enter the activation code accordingly. You are now ready to use the OFIS Scanner.

# Registering a Fingerprint in OFIS

1. During the process of registering a fingerprint in OFIS, the registration user interface will appear and prompt the user to select a finger to be enrolled into the system. Select a finger to proceed.



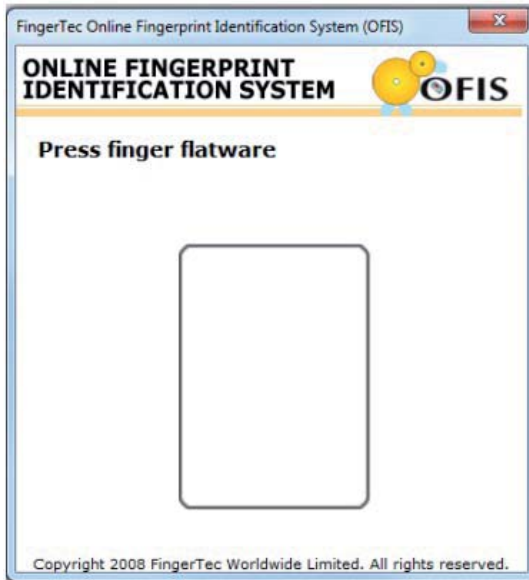
2. Follow the instructions and place the finger on the scanner 4 times to capture the fingerprint template.



3. Upon completion the user interface will prompt that the registration is successful.

## Verifying a Fingerprint in OFIS

1. During the process of verifying a fingerprint in OFIS, the verification user interface will appear and prompt the user to place the enrolled finger on the scanner.



2. The window will close automatically if the verification is successful.



## 3 • IMPORTANT PRODUCT INFORMATION GUIDE

This Important Product Information Guide contains safety, handling and maintenance for the OFIS Scanner.

### IMPORTANT SAFETY AND HANDLING INFORMATION

**WARNING:** Failure to follow these safety instructions could result in fire, electric shock, or other injury or damage to the OFIS Scanner or other property. FingerTec Worldwide Sdn. Bhd. will not be held accountable for any damage or injury caused by improper use of the OFIS scanner.

**HANDLING THE OFIS SCANNER:** The OFIS Scanner contains sensitive components. Do not drop, disassemble, microwave, burn, paint, or insert foreign objects into the OFIS Scanner. Do not use the OFIS Scanner if it has been damaged – for example, if the OFIS Scanner is cracked, punctured or damaged by water.

Place the finger flat on the reader when enrolling and verifying fingerprints. Apply the pressure evenly and hold the finger on the sensor until the capture is complete.

**KEEPING THE OFIS SCANNER CLEAN:** To achieve a good quality fingerprint scan, the OFIS Scanner's sensor will require frequent cleaning. Apply the glutinous side of a piece of adhesive cellophane tape on the sensor and peel it away repeatedly until the sensor is spotless. Do not spray or apply glass cleaner or alcohol-based cleaner onto the sensor.

**AVOIDING WATER AND WET LOCATIONS:** Do not expose the OFIS Scanner to water or rain or handle the OFIS Scanner near wet locations. Take care not to spill any food or liquid onto the OFIS Scanner. IN case the OFIS scanner gets wet, unplug the USB cable before cleaning, and allow it to dry completely before turning it on again. Do not attempt to dry the OFIS Scanner with an external heat source such as a microwave oven or hair dryer.

**REPAIRING AND MODIFYING THE OFIS SCANNER:** Never attempt to repair or modify the OFIS Scanner yourself. If the OFIS Scanner has been submerged in water, punctured, or subjected to a severe fall, do not use it until you take it to an authorized FingerTec reseller for service. If you have questions, contact FingerTec or an authorized FingerTec reseller. For more information, go to: <http://user.fingertec.com>