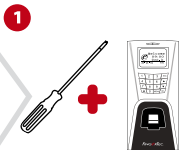


START

HARDWARE INSTALLATION

*Refer to installation diagram & Hardware Manual / AdapTec Manual (consult qualified installer)



1
FingerTec Terminal Installation

HARDWARE SETTINGS

*Refer to Hardware Manual



2
User Fingerprint/Card Enrollment



3
Communication Settings

SOFTWARE INSTALLATION

*Refer to TCMS V2 Manual



4
TCMS V2 Installation

SOFTWARE SETTINGS

*Refer to TCMS V2 Manual



5
TCMS V2 Initial Settings

DAILY OPERATION

*Refer to TCMS V2 Manual



13
Download Data From Terminal To Computer



14 * Skip step 14 if you are NOT using third party software
Exporting Data Into Third Party Software (i.e. Payroll)



15
View & Print Report

COMPLETE

FINGERTEC Quick Start Guide

For more info go to <http://user.fingertec.com>



6
Download Fingerprint Templates

Download fingerprint templates from terminal to computer installed with TCMS V2

For Door Access Functions

(Skip steps 10, 11 & 12 if you are NOT using door access functions)



12
Upload Settings to Terminal



11
Assign User With Access Code



10
Time Zone & Access Code Settings

For Time Attendance Functions

(Skip steps 8 & 9 if you are NOT using time attendance functions)



9
Assign Users To Working Group



8
Settings of Working Time & Group

SOFTWARE SETTINGS

*Refer to TCMS V2 Manual. SET ALL if using both functions.



7
User Information

Fill up user information in TCMS V2