

R2

AC900

## Quick Start Guide

### 1 Setting the Date and Time

- 1 Press **Menu**, go to **Options** and select **System Options**.
- 2 Select **Date/Time**, insert the correct value and press **OK** to save the settings.

### 2 Enrolling Fingerprints into the Terminal

- 1 Press **Menu**, go to **User Manage** and select **Enroll User**.
- 2 Select **Enroll FP** and press **OK** when you see "New Enroll?".
- 3 Key in a **User ID**, scan the finger 3 times according to the instructions.
- 4 Press **OK** to save, and **Esc** to return to the main screen.

The Quick Start Guide is intended to provide the user with simple instructions on how to setup the terminal date/time and communication as well as to perform fingerprint and card enrollment and verification. For more details on other topics of terminal management, refer to the terminal's hardware user manual available in the package or online at:

- **R2:** <http://info.fingertec.com/r2-4>
- **AC900:** <http://info.fingertec.com/ac900-4>

© 2015 Timetec Computing Sdn Bhd. All rights reserved • 022015

### 3 Enrolling Cards into the Terminal

- 1 Press **Menu**, go to **User Manage** and select **Enroll User**.
- 2 Select **Reg RFID** and press **OK** when you see "New Enroll?".
- 3 Key in a **User ID** and scan the card at the terminal until the Card ID is displayed on the terminal.
- 4 Press **OK** to save, and **Esc** to return to the main screen.

### 4 Communication Settings

Press **Menu** > **Options** > **COMM opt** > Set value for **IP/Subnet mask/Gateway/Dev ID** > **OK** to save > **Restart** to apply changes.

**Default set value:**

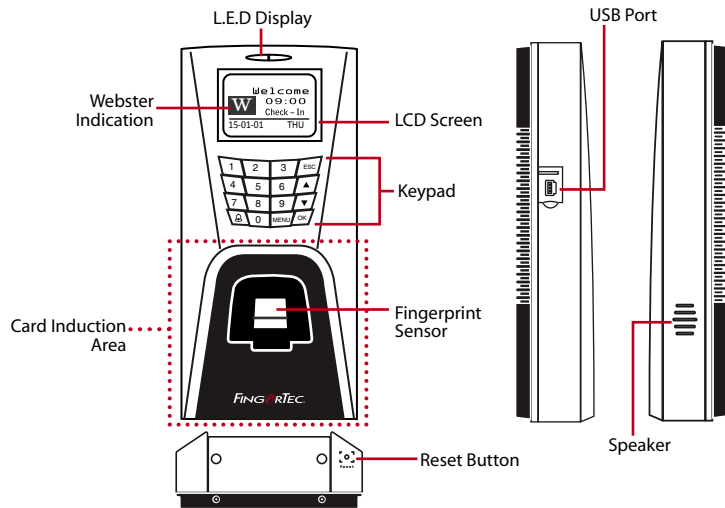
IP address – 192.168.1.201

Subnet mask – 255.255.255.0

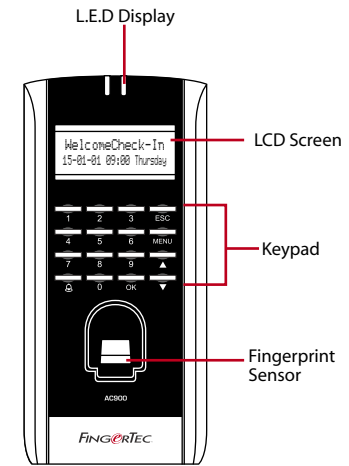
Gateway – 192.168.1.1

Dev ID – 1

## Terminal Overview • R2



## Terminal Overview • AC900



## Software Roadmap

1

**ingress**  
Advanced Access Control System

### Installation

The FingerTec Ingress software installer is available in a DVD that comes with all FingerTec terminals. Complete the installation.

2



### Online Activation

Use the terminal's serial number to activate your software online. Contact your local reseller or [support@fingertec.com](mailto:support@fingertec.com) if you require offline software activation.

3

**Real Time Monitoring In/Out Records**  
Monitor transactions that occur in the terminals in a real-time manner.

### System Overview

