

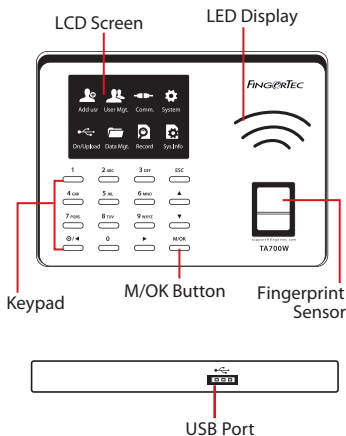
FINGERTEC



TA700W

Quick Start Guide

Terminal Overview



1 Setting the Date and Time

1. Press **Menu**, select **System**, select **Date/Time** and set the value.
2. Press **OK** to save the settings, then press **ESC** to return to the main screen.

2 Enrolling Fingerprints

1. Press **Menu**, select **Add User** icon.
2. Key in a **User ID**, select **Enroll FP** and place the finger on the scanner 3 times according to the instructions.
3. Press **OK** to save then press **ESC**. Press **OK** again, and then **ESC** again to return to the main screen.

3 Communication Settings

Connect To WiFi:

Press **Menu** > **Comm.** > **WIFI setting** > Select **Network Name** > Enter the **WIFI password** > Press **OK** to save.

Determining the IP address, Subnetmask and Gateway:

For DHCP connection of the terminal to network, **Menu** > **Comm.** > **WIFI setting** > Press **(0)** > Turn DHCP **"On"** > Press **Ok** to save.

To enter the IP setup of the terminal for WIFI connection manually, **Menu** > **Comm.** > **WIFI setting** > Press **(0)** > Turn DHCP **"Off"** > Enter the IP Address, Subnetmask, and Gateway values > Press **OK** to Save.

Software Roadmap



1

Online Activation

Use the terminal's serial number to activate your software online.

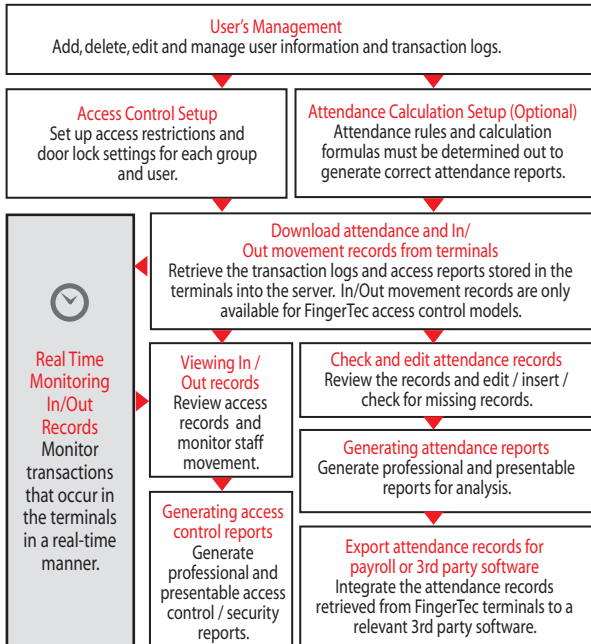
Contact your local reseller or support@fingertec.com if you require offline software activation.

Software download / User guides

Available online at <https://product.fingertec.com/userguide.php>

2

System Overview



FINGERTEC