

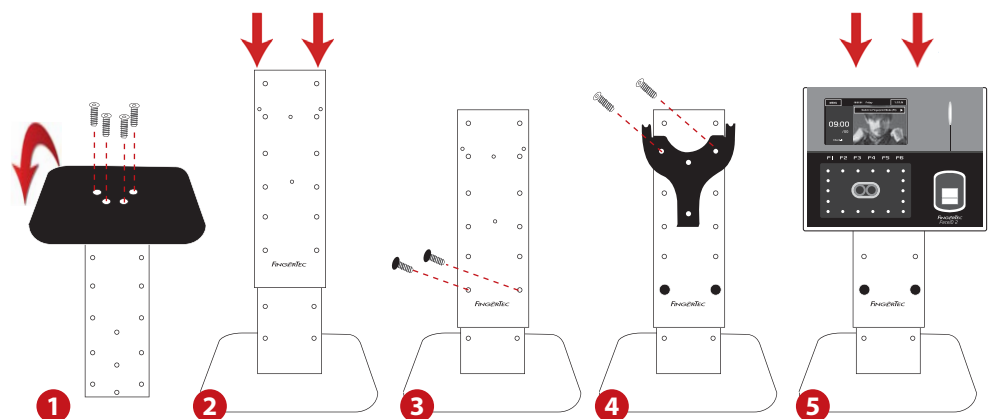
Ease of Installation with **DIY Display Stand for Face ID 2**



If your Face ID 2 is used for only time and attendance purpose, and not for access control, you may consider this specially designed Face ID 2 Display Stand. With its DIY concept metal structure, it easily installs your FingerTec Face ID 2 model, adjustable to the desired height for ease of face or fingerprint verification. It is portable too, allowing you to place it anywhere on your reception desk or entrance, the best location to record time and attendance of your staff.

* FingerTec resellers can also use the DIY Display Stand as a Face ID 2 demonstration accessory.

INSTALLATION DIAGRAM



SPECIFICATIONS

MATERIAL	Zinc alloy
BASE DIMENSION (mm)	220 x 220 x 2
HEIGHT (mm)	5 adjustable height - 305, 345, 385, 425, 465
WEIGHT	1.8 kg

