

Beyond Biometrics

FingerTec in Retrospect

timeTec

www.timeteccloud.com

From the Group CEO:
**We Build
Another Brand**
pg1

Cloud-Centric Business:
**The Trend of
the Future or Just
a Passing Trend?**
pg34-35

**FingerTec Around
the Globe**
One Biometrics
Installation
At A Time
pg10-22

Roadmap of TimeTec
Research & Development Team
pg36-37

Stay Ahead in the
**Game with Cloud
Solution**
pg38

FingerTec
**Answers 8 Weird
Questions!**
pg23

We Build **ANOTHER BRAND**



Teh Hon Seng
Group CEO of Timetec Computing Sdn Bhd
honseng@fingertec.com

In 2015, we took a few major steps to boost our ongoing transformation, building its momentum, and always making sure that all is in good shape.

First, we hired. We tripled our workforce. Until one day in September, I suddenly realized that we were no longer in the SME category that entitled us to enjoy some government benefits for the SMEs.

Second, we outsourced. The tripling of our staff force still fails to meet our aggressive schedule. We are so determined to launch another six cloud applications from the existing two by the end of 2016. This explains why we hunt for more top minds; and our perseverance on better user experience suggests even more. So, the hunt is still on.

Third, we showcased. From joining security tradeshows, we started taking part in cloud IT and HR events to present our new cloud products. Polarized views were received. We often heard visitors' from the security exhibitions commented, Wow. Two dollars per person per month; that's expensive! On the other hand, people from IT and HR industries reacted, USD24 per annum per employee? It's peanuts. When the trend is right, you can never go wrong.

Fourth, we fine-tuned. It's imperative that our internal system be more adaptive to the cloud environment. Without a lightweight organization structure, it would be too clumsy to float on the cloud. And, to ease the management when R&D swells, we adopted the CMMI standard, which is now at the final stage of certification.

Fifth, we strategized. We have laid our marketing foundation for resellers to market our cloud applications effortlessly with higher benefits and RWI (Return Without Investment). All they need to do is to start selling.

Sixth, we reinvent. FingerTec is already a 15-year old brand that we built from scratch to reach that global level and now we are building another brand name, proudly named TimeTec. The implications? We are moving from hardware to Software as a Service (SaaS); from sale to subscription; from one-time off to recurring income; from biometric to beyond biometrics.

Many more.

All in all, the transformation is going strong; it's never too late to jump on our magical cloud wagon for the journey into the future. Our whistle is blowing loud and clear.

Table of Contents

Publisher • Timetec Computing Sdn Bhd

Advisor / Editor • Norana Johar

Contributors • Daryl Choo, Nattalina Zainal

Graphic Designer • Wong Kam Yin

Email • info@fingertec.com

Website • www.fingertec.com

All editorial contents and materials are copyright of Timetec Computing Sdn Bhd. Reproduction is subject to permission from Timetec Computing Sdn Bhd. This issue was published in January 2016.

FingerTec Yearly Review & Preview

2015 Milestones **4** | 2015 Product Highlights **6** | 2016 Product Sneak Peek **8**

FingerTec Goes Global

Fu Chan F&B Group Finds FingerTec Face Biometrics System More than Satisfactory **10**

FingerTec Collaborates with Lenovo in Time Attendance and Access Control Workshop in Hong Kong **11**

Zong Extends Its Reach with FingerTec's Systems **12**

Qatar Museums Unearths an Amazing Time Attendance & Access Control Solution with FingerTec i-Kiosk 100 Plus **13**

Nile Air Chooses Kadex for Access Management **14**

FingerTec Installed in Fast Food Restaurant Chain in Saudi Arabia **15**

Crown Paints Kenya Limited Achieved 'Company of the Year Award (COYA)' with FingerTec System's Help **16**

FingerTec Integrates with Lithuania's Safe School System Program for a Safer School Environment **17**

Francisco Medina Keeps Apartment Residents Safe with FingerTec in Dominican Republic **18**

A Success Story: Rehab Co & FingerTec USA **19**

Sally Beauty Peru Stays On Top of Time Attendance and Access Control with FingerTec's Q2i and H2i **20**

FingerTec Solves Pesquera Exalmar's Access Control Problems **21**

TimeTec TA to the Land Down Under with GJK Facility Services **22**

FingerTec Answers 8 Weird Questions! **23**

FingerTec Family

FingerTec Family **24** | Scholarship Recipient Nicholas Khooi Makes Skill-Building His Worth Investment **26**

FingerTec Reseller Highlight

PC Mart Taking FingerTec to Every Corner of Malaysia **28**

ITQAN FINGERPRINT CO. Securing Saudi One Biometrics Product at a Time **29**

MAGNUM DUBAI Betting on Cloud Solutions **30**

RADIOCOM Going Strong with FingerTec in DR of Congo **31**

Global Reseller Program **32**

Tap on Fingertec Resources to Build Your Business **33**

Market Outlook & Trends

Cloud-Centric Business: The Trend of the Future or Just a Passing Trend? **34**

Roadmap of TimeTec Research & Development Team **36**

Stay Ahead in the Game with Cloud Solution **38**

FingerTec Products Information

Product Catalogue **41**

Hardware Selection Guide **46**

Software Selection Guide **47**

Beyond Biometrics

FingerTec in Retrospect



2015 Milestones

2015 is the year FingerTec takes on a new dynamic by focusing not only on biometrics technology but making the transition to cloud solutions for workforce management and security. Check out the product updates and releases as well as the strategies taken in making FingerTec a better brand.

Improved Coreboard for Better Performance

The most important part of a car is its engine, and for FingerTec biometrics products, you have to look at the coreboard. This year we introduced the FMM100, the latest that comes with an 800MHz microprocessor, 128MB RAM and 256MB flash memory. The new specifications is loaded with new firmware with enhanced features, greater data compatibility, and improved synchronization capabilities. Machines with this board will have upgraded graphical user interface and attractive designed icons which afford greater personalization and customization of the display style for the user interface, wallpaper, voice, bell schedules, punch state options and shortcut key mapping area. Who wouldn't want that?

Centralizes Data from Multiple Locations with FCC

Customers feedback is gold and through years of customer support, one thing customers are very concerned about is data lost and how to avoid it from happening. We present the FingerTec Cloud Center for FingerTec's global clients to store their data securely in the cloud at a reasonable price. FCC makes data lost a history. In FCC, the system keeps terminal information, transactions data and user data online as backup on cloud and data is secure and accessible at anytime, from anywhere.

IngressVMS Launched

In May 2015, FingerTec launched its very own Visitor Management System, named IngressVMS. This application is tailored to manage visitors of a premise. Fully integrated with Ingress Door Access System for a secured visitor management system, an organization can filter its visitors effectively, making sure that no security risks are allowed into a premise. IngressVMS is a fully automated web-based system suitable for modern infrastructure.

Powerful Ingress is Getting Stronger

Ingress is FingerTec's powerful door access software dedicated for FingerTec's door access terminals. In 2015, extensive research and developments have been carried out to better Ingress in many aspects including features, functions and user experience. Ingress mobile app also has been re-introduced to contain various functions suitable for door access management. Experience amazing Ingress, request for a trial version: <http://www.fingertec.com/trialversion/ingress/>



TimeTecTA is Gaining Momentum

Cloud is the future and what's a better option than to be ready with the solution now. TimeTec TA, our very own cloud solution for time attendance has been getting interests from the markets that require attendance data to be accessible at anytime. Equipped with awesome time attendance features, compatible with many verification methods plus the crucial scheduling and rosters management, TimeTec TA is not only affordable, it's on-line, it's scalable, accessible, secured and reliable. And the good news is, we are giving 10 user licenses worth USD20 per month per account for LIFE! Sign up for an account now and get your licenses free from us! <http://www.timeteccloud.com/signup>

FingerTec OFIS Y is now ANSI 378 & ISO-IEC 19794-2 Compliant


Benefits of having these standards include enabling development of integrated, scalable and robust solutions, and ensuring the availability of multiple sources for comparable products and of competitively priced products in the marketplace. For those who have these standard requirements, contact us at info@fingertec.com to order OFIS Y.

TimeTec Cloud is Cumulonimbus

Because it's big, it carries weight, and it's lucrative! TimeTec Cloud contains more than just time attendance at www.timetecta.com. In the pipeline, we are at the last stage of TimeTec Patrol, guard patrolling cloud solution, and we will offer TimeTec Leave, TimeTec Hire, TimeTec VMS, i-Neighbour and EpiCamera to complete the cloud workforce management under one roof. Get with the program and get the rainfall when the market is ready to take on cloud solutions! In the meantime, sign-up to the cloud solution of your choice at www.timeteccloud.com and you'll be the first to know when they are ready!

FingerTec's Packaging Gets Eco-Friendlier

We are using Kraft 100% recycled packaging boxes for all our hardware and accessories, which reduces packaging materials by up to half, a big win for us in our book. The new look and design of our Kraft packaging boxes is our way of not only making things easier for our customers but also incorporates eco-friendly measures, a clean and attractive packaging design that not only looks good but goes hand in hand with our Going Green initiative, balancing the packaging needs of our consumers with the best environmental practices. Love the Earth, our home.

We are an organization that always moves forward with the we-can-do-it attitude, and we always find the how-to-do-it ways. We will keep on churning new developments and will find ways to assist and satisfy the market the best we can. 

Product Highlights





Amazing cloud software to manage employee's information, attendance, scheduling and roster assignment from any devices, from anywhere in the world derived from one central and secured location. As today's workforce has becoming more dynamic, it's time for businesses to automate the HR process in attendance to improve accuracy, eradicate redundancy and achieve data accuracy of related HR activities. The Internet of things reduces the reliance of personal computers in the workplace and TimeTec TA is designed with staff's mobility in mind. TimeTec Mobile app taps on GPS technology to monitor employee's mobility.

TimeTec TA is the go-to HR attendance solution that all organizations need.



Designed with security foundation in mind, Ingress has grown to be the trusted security software for FingerTec's access control products to date. Ingress monitors security of an organization's premises and it centralizes all installed FingerTec devices from various entry points in one key location. Throughout last year, Ingress went through various upgrades that focused on enhancing user experience and its security functions. Ingress has features that allow event monitoring in real-time where alerts can be triggered instantly and the right security action would soon follow. With the launching of Ingress Mobile for Android and Apple devices, all monitoring can be done remotely with the ability to receive alert notifications in case of emergencies and alarm triggers making the software more accessible.

Ingress, the trusted security solution your business needs



TA500 is a time attendance hardware that can store up to 2000 fingerprint templates, suitable for small to medium enterprises. Time attendance has gone from the old and moot methods of card punching and time stamping machines to one with biometrics technology and devices that are affordable, scalable, and mobile. The TA500 comes with internal battery and follows the plug and play function that makes it portable. Organizations can save a lot in cost and time with TA500 by eliminating paperwork and other devices that come with manual systems.

FingerTec TA500, portable biometrics for today's business!



The latest in biometrics devices for access control and time attendance that comes with a sleek design and a colourful interface, R3 is a proud successor of the best-selling R2 device. It can contain 3000 fingerprint templates, 10,000 cards and hold 100,000 transaction logs at any given time. The R3 is bundled with Ingress and is also one of the devices that are supported by the FingerTec Cloud Center (FCC) that centralizes your fingerprint and attendance data from multiple locations in one cloud storage.

Be smart, be secure, be biometrics with FingerTec R3! Install one at your premise today!



EpiCamera is a cloud-based video surveillance system that can be accessed via web login and allows various types of monitoring functions. This gives system administrators the ability to monitor the premises from anywhere, at anytime and choose the camera view mode that they require. EpiCamera can be used for business and personal purposes and can be built on as many cameras desired, as the solution is scalable to cater to the right size of service. No matter the size and industry, EpiCamera can be used indiscriminately to monitor schools, airports, factories, and even beloved pets at home.

Amplified your surveillance online with EpiCamera!

2016 Product Sneak Peek

And the cloud journey continues...

TimeTec TA has been introduced to the market in 2015 as an imprint of our involvement in cloud technology in the workforce industry, and in the following year we'll continue to strengthen our positioning with inclusion of more cloud solutions for the workforce and security industries.



timeTec
PATROL
www.timetecpatrol.com

TimeTec Patrol

Guard patrolling system utilizing mobile, cloud and NFC technologies. TimeTec Patrol mobile application lets guards-on-duty to check in their specific whereabouts using NFC technology through their mobile phones and for them to report on incidents during their rounds for real time consolidated updates, giving the management clear overview of security status at any given time. Data collected from TimeTec Patrol is valuable for assessment of each guard's productivity, and the overall effectiveness of guard patrolling system in place.



timeTec
HIRE Recruiting Solution
www.timetechire.com

TimeTec Hire

Recruitment solution for organizations to hire employees without necessarily having to employ third-party services or agencies. Post job openings online for potential employees to apply and submit their credentials directly to the potential employer. TimeTec Hire provides organizations with a systematic way to collect data, assist in the screening process and merge the newly hired employee data with the current employment data in no time at all. Employers also have the option to link TimeTec Hire to social media or recruitment agency to gain more coverage and conversion.



TimeTec Mobile Workforce

TimeTec Mobile Workforce, TimeTec MW is an online and mobile tool for company to let their mobile and static employees to collaborate more effectively in achieving the ultimate customers' satisfactions. By keeping your employees in contact with coworkers, vendors, and customers in a secured system, you can boost the productivity effortlessly without any worry. Close sales, solve problems, and respond to urgent requests more effectively by enabling employees to work virtually from anywhere. Improve service and satisfaction by interacting with customers in real time, on location or from a distance.



TimeTec Leave

Online employee Leave Management System and holiday planner for today's offices. TimeTec Leave allows insertion of leave rules, leave limits and leave calculation settings and many more to achieve automation. This solution saves a lot of HR time attending to leave matters, which is tedious yet essential in small or large organizations. Online leave application is available through TimeTec Leave mobile app or the same application on any Internet browser, and managers can evaluate the applications for approval. Check leave balance, entitlement, restrictions and etc from TimeTec Leave for better leave management for sure.



TimeTec VMS

Visitor management system online that allows businesses to manage daily visitors coming to their premises. The solution offers visitors preregistration option where visitors can get approval before their visitation date and administrators or security personnel can screen visitors to keep a clean sheet of visitor list at all times. Visitors' information is kept intact in TimeTec VMS for future reference as a security precaution.



i-Neighbour

Neighbourhood visitor management system to control visitors' access to any neighborhood. Connect to any device for visit preregistration, and get the data of your visitors ahead of time, separating the good ones from the shady characters. Deploying i-Neighbour will provide your neighbourhood with accurate data of the who's who for the community to maintain peace and security at all times.


Fu Chan F&B Group

Finds FingerTec Face Biometrics System More Than Satisfactory



As one of South East Asia's hotspots for gastronomic pleasure, the island of Singapore is home to a number of established food and beverage business companies. One such company is Fu Chan F&B Group, with seventeen outlets through out the island-wide city-state. Established in 1999 by founder, Mr. Chu Chee Keong, the company adopts FingerTec's facial recognition system to centrally manage all the outlets' worker attendance for payroll processing. Such a system may seem daunting to manage but with FingerTec's automated data management, the heavy burden is greatly lifted with the help of FingerTec's Singapore reseller, SmartSys Solutions Pte Ltd.

During its infancy, the management at Fu Chan F&B Group used time cards to manage workers' attendance. Sighs and grunts were probably commonly heard back then as such a system can be time consuming, and with the business growing, the accounting department had to learn to bite the bullet. Since the implementation of FingerTec Face ID 3 Time and Attendance System for some of the company's outlets, the HR department has reportedly been able to obtain the attendance data in a timelier manner. Face ID 3 uses Ingress as its software, which applies a server-client based model that helps centralize the data management for each outlet, generating reports that include employees' total working hours, in-out and break time, overtime, and short time. With the amount of automated functions the Face ID 3 offers, including the compatibility with other external functions such as IP camera integration and easy back up and restore of data, the Face ID 3 was a clearly a welcomed addition to Fu Chan F&B Group's management.

Satisfied and pleased with the Face ID 3, the company has just recently installed Face ID 4 and Face ID 4d for all the various outlets that they have. The Face ID 4d was installed at the main office's door with nine units of Face ID 4 deployed for workers' time attendance at the outlets. With a current business expansion, Fu Chan F&B Group has expressed plans to deploy more units for new outlets in the near future. This job has been awarded to S.E.A Sales & Services (S) Pte Ltd, one of the SmartSys's security solution partners in Singapore. 



FingerTec Face ID 3 and Face ID 4.



FingerTec Collaborates with Lenovo

Time Attendance and Access Control Workshop in Hong Kong



In March 6 2015, located at the Lincoln House, Quarry Bay Hong Kong, Founder Global Tech Limited, FingerTec's esteemed distributor in Hong Kong had organized a joint event with Lenovo HK. This 3-hour event entitled "Time Attendance and Access Control Solution Workshop" had attracted 25 system integrators and developers from 17 companies from around the island.

In late 2014, Lenovo acquired IBMX86 server business and at the same time FingerTec released its Ingress application, which is designed to support server and client. Meanwhile FingerTec devices are focused on IP and standalone connection, making it more suitable for the IT department to manage instead of by security/facility or admin department. Banking on this synergy, Founder GlobalTech approached Lenovo HK to combine security SI and IT SI under one event to introduce FingerTec devices and Lenovo server simultaneously.

During the event, the participants were introduced to Lenovo workstation, server tower and server rack while Founder Globaltech explained on FingerTec's devices such as Kadex, R2 and Face ID 4 and went in depth about Ingress software. They were also demonstrated on how these two systems work together in one ecosystem. Overall, the participants were very inter-

ested in obtaining FingerTec's SDK but they were intimidated by the installation of door access peripherals due to lack of experience. Realizing this obstacle, Founder GlobalTech tackled the subject by providing them with a readily available list of installers who they can work with to complete future installations. @

lenovo FOR THOSE WHO DO X FINGERTEC

TIME ATTENDANCE & ACCESS CONTROL SOLUTION WORKSHOP

06 MAR 2015

14:00 - 17:00 P.M.

Register now

21/F, LINCOLN HOUSE, TAIKOO PLACE, QUARRY BAY, HONG KONG

14:00 Registration
 14:30 Why Lenovo Server for System
 15:00 FingerTec Introduction with demonstration
 16:00 30 Minute Break
 16:30 Lenovo PC product update
 16:45 Lenovo & FingerTec Special Offer
 17:00 Lucky Draw

FACE ID4 TA 200plus
 R2 FACE ID3

ONE STOP SOLUTION

Chance to win HKD1000 Prize

To Apply:
 1. log in to website and fill in the registration forms below
<https://www.fingertec.com/hk/en/news/registration>
 2. Personal data (name, telephone number, email address, company name, attendance)
 3. Contact us at (852) 2611 4166 to register






ZONG
Say it all

Extends Its Reach with FingerTec's Systems

Communication has for ever been one of the most important pieces of the puzzle in this ever so vastly evolving world. Times have changed so drastically that many believe that life without hassle-free communication would be equivalent to the dark ages. Zong, a titan of a mobile service provider in Pakistan has laid their foundations deep within the fabric of the county by providing quality services in the field of mobile communication. Zong is Pakistan's second largest GSM mobile service provider and third largest mobile service in terms of subscriber base of over 25.6 million. Recently, Pakistan entered a new phase of mobile communication with the introduction of 3G and 4G and Zong was right smack in the middle of the transformation of the communication world, providing people with a new means of communication and making their life even more resourceful. AppleWood, FingerTec's reseller in Pakistan had the privilege of helping Zong upgrade its security and time attendance protocols using FingerTec equipment.

Over the different phases of the commissioning period, AppleWood installed about 24 FingerTec devices across Zong's various offices in Pakistan. The offices include the regional headquarters in Karachi, Hyderabad, Quetta, Islamabad and proposals for other offices including sub-regional offices in Peshawar and Lahore are being worked on. The model chosen was R2 and Kadex. All across the offices, these devices have been installed for dual purposes, time attendance recording and to provide security using access control. The records of all employees are being monitored at a central server using the FingerTec TCMS V2 software and the Ingress software simultaneously.

With its time attendance and access control problems all felled in one swift swoop, Zong Pakistan has nothing but praises about the effectiveness and great end-user customer service that AppleWood has provided them with throughout the whole process. Zong has been converted into firm believers in the FingerTec guarantee of high-quality, hassle free and comprehensive time attendance and access control solutions and will continue to purchase and support FingerTec products in its future expansions across the republic of Pakistan. 



FingerTec R2 & Kadex model




Qatar Museums Unearths an Amazing Time Attendance & Access Control Solution with FingerTec's i-Kiosk 100 Plus

Museums are a wonderful place to broaden and fuel the human mind and knowledge. As archives or storehouses of information and learning, these public cultural institutions are a treasure trove of human history and ingenuity. Even in the dusty, dry terrain of Qatar, Doha, one will not find a shortage of museums especially with Qatar Museums (QM) at the helm. Established in 2005 by Sheikh Hamad bin Khalifa Al Thani, former Emir of the State of Qatar, Qatar Museums aims to combine the resources of all museums in Qatar, providing a comprehensive organization for museum development to connect diverse audiences – nationally and internationally – with a program that welcomes the world to Doha.

With so many of their present museums and exhibitions located all over the region in numerous remote locations and even internationally, Qatar Museums were continuously splitting hairs over the time attendance and access control issues and mix-ups as all employees must report to the HR administration team headquartered at the main office. Without a centralized data management system, it was a harrowing ordeal to constantly monitor and deal with the numerous amount of data coming in from all over the region and to ensure that data integrity is error free and uncompromised.

However, with the deployment of over 60 FingerTec i-Kiosk 100 Plus systems in all main and minor museums around the region by Intelligent Project, the automation and simplification of employee monitoring and data management provides for easier and accurate tracking of employees whether or not they are working in or out of the office as fingerprint identification data cannot be duplicated or falsified easily. Qatar Museums also utilized i-Kiosk 100 Plus' full colour TFT 65k display screen com-

plete with short messaging and display/voice capabilities in Arabic to display corporate advertisements and connect with all their employees. With a supersized capacity of over 10,000 fingerprint templates and 200,000 transaction logs, Qatar Museums were able to store all 5000 of its employee's data and perform hassle-free data transferrals with only a USB flashdisk device.

Intelligent Project worked hard to ensure that Qatar Museums were provided with ample training on the features and benefits of the Ingress software for them to fully utilize this powerful software as well as the possibility of data integration to third party Payroll System for future use. Intelligent Project is stationed in Doha since its establishment in 2000 and has been promoting FingerTec products to corporate clients in the region while simultaneously building its channel network nationwide. Intelligent Project is now one of the noted companies in Qatar under the Shk Abdulrahman Al-thani Group providing all types of surveillance solutions, access control systems and other IT related solutions and services. 



FingerTec i-Kiosk 100 Plus model

Nile Air Chooses Kadex for Access Management



Nile Air is the leading private airline in Egypt catering to destinations within the Middle East and with plans for future expansions into other parts of the world. Based in Cairo, with a branch office in Alexandria, Nile Air offers passengers scheduled flight services both locally and internationally. As a client of Apex Integrated Solution, FingerTec's Egypt reseller, Nile Air has been using FingerTec devices for its time attendance system.

Nile Air is an Egyptian joint-stock company established in 2008 and received its air operator's certificate (AOC) in November 2009 from the Egyptian Civil Aviation Authority, allowing the use of aircrafts for commercial purposes. Nile Air became the first private Egyptian airline to publish its schedule and flight availability on the Global Distribution System (GDS).

The company began operations in 2011 and now has flight routes from Cairo, and its second hub in Alexandria, to Jeddah, Yanbu, El-Gassim, Taif, Tabuk and Kuwait. Offering passengers secure and low-priced air travel services, it is unsurprising that Nile Air has just recently made


two orders of the Airbus A320-200 to expand the current fleet size of three. June 2015 also marks the launching of a new flight route from Cairo to Hofuf.

Since 2011, Nile Air has installed both the TA200 Plus and the AC100C, which use biometrics technology as data collecting features for a time attendance system. Both models use fingerprints and password verification methods, with an extra RFID card feature for the TA200 Plus. These options, alongside full coloured displays and the TCMS V2 software, make for a convenient and practical system for any company. Despite having fewer features than the TA200

Plus, the AC100C still offers a reliable system at a lesser cost, making it the best choice for small companies.

To further improve on their operations, Nile Air recently installed FingerTec products Kadex and i-Kadex alongside the already established attendance system for their Cairo based Headquarters. Kadex is an access and attendance system that supports card ID, a 5-digit password or a combination of both verification methods. The i-Kadex is the slave reader component to Kadex which can be used in a mix and match combination with the Kadex, m-Kadex, and k-Kadex.

As Nile Air expands its operations, the need for a better working environment arises and the company recently installed two more FingerTec products, the Kadex and i-Kadex. The Kadex combines both time attendance and access functions. Instead of relying on biometrics, the Kadex utilizes card, password and PIN verifications and has been installed at all three entrances of the head office in Cairo near the Egyptian Airport.

With products that offer reliability and the excellent service by Apex Integrated Solution, Nile Air's decision to turn to FingerTec for its solution is highly warranted. 



FingerTec Kadex model





FingerTec Installed in Fast Food Restaurant Chain in Saudi Arabia

A time and attendance system will increase the productivity of any company out there by keeping track of staff performance, promote personal and professional evaluation, and prevent tardiness and absenteeism.

REZA Food Services Co Ltd. followed the footsteps of one of its sister companies in installing FingerTec products for a time and attendance system of their own. REZA Food Services is owned by the Alireza family, one of the oldest and respected trading families in Saudi Arabia and is a part of the REZA Investment Company, which has ventures in environmental health & hygiene, chemicals, logistics, energy, and many other industries.

Created in 1994, REZA Food Services owns and operates all McDonald's restaurants in the Western and Southern regions of Saudi Arabia. With more than 50 McDonald's restaurants across the region including major centres such as Medina, Mecca, and Yanbu, it's no surprise that the company installed 81 units of Face ID 4 for its time attendance system.

The Face ID 4 is an identity verification terminal from FingerTec equipped with biometrics technology for facial recognition. With the number of restaurants established and the employees to manage them, the Face ID 4 is the perfect device for a fast and user-friendly verification method. Facial recognition devices makes it easy for employees to get right to work and keep up with

their schedules as verification requires no physical contact with the devices, no longer having the need to free up their hands or worry about hygiene.

One of the important features that any verification devices should have is data management, and with the Ingress software, the Face ID 4 is well equipped in managing and recording door activity, configure time attendance functions, and monitor and evaluate attendance.

Every company or organisation requires a system to manage the time and attendance of the workforce, more importantly to those with a large staff and various workplaces. With a focus on delivering excellence to customers, suppliers, employees, shareholders, and associates, REZA Food Services has received the boost in management to help in delivering exactly that.

Quality of Connectivity is FingerTec's reseller based in Jeddah, Saudi Arabia and the company responsible for the installations for REZA Food Services. Established in 2003, Quality of Connectivity offers not only access control, time attendance, and security systems, but also services such as web designing, wireless broadband, and web hosting. [e](#)



FingerTec Face ID 4 model

Crown Paints Kenya Limited Achieved 'Company of the Year Award (COYA)' with FingerTec System's Help



Established in 1958, Crown Paints Kenya Limited has grown to a company with an annual turnover of USD 50 Million and now produces 2.3 million litres of paint per month.

The company has 7 branches and several depots and showrooms in Kenya and the wider East African Region and employs both permanent and contractual employees. Crown Paints currently uses 14 FingerTec Time Attendance Devices for Attendance Management across all the branches.


In 2007, the company acquired the FingerTec Time Attendance System (TA100C), after previously working with several Time Attendance devices, which they found to be inefficient as they failed to prevent issues such as overtime being paid in excess, wasted resources, and of course

'Time Theft' or frauds like 'Buddy Punching'. With FingerTec however, the tracking features for the audit trail have been of great help.

The company has recently upgraded some of their devices to the latest TA500 for the smaller branches, which have greatly improved efficiency in Time Attendance management for all the employees.

From design to installation in 2007, and in every step in between, FingerTec through Gravity Solutions Limited - Kenya, has been 'completely professional and very responsive'. Even 7 years later, both organizations still stay in touch, with Crown Paints being kept informed of the latest changes in technology and to help in upgrading the systems for better performances. To quote Mr Byram Wanjalla, Senior ICT Officer of Crown Paints Kenya Limited, 'In 2014, FingerTec helped us achieve the coveted 'Company of the

Year Award' due to a great Attendance Management of our employees resulting to higher productivity and an improved annual turnover! We count ourselves blessed to have made the right decision here!'

The company also achieved 3 more awards at the Company of the Year Awards 2014 for CEO of the Year, Leadership and Management, and Productivity and Quality awards. 



FingerTec TA100C & TA500



FingerTec Integrates with Lithuania's Safe School System Program for a Safer School Environment

Concerned over the increasing crime rate the world over, various measures are being taken by individuals and authorities to heighten the sense of security. According to the recent FBI statistics, thousands of children become victims of crimes through various methods such as kidnappings, violent attacks, sexual abuse, or online predators. School shootings is another form of violence that has been inflicting schools around the world and the more recent incident happened last year in Viljandi, Estonia where a 15-year-old boy killed his teacher with a gun in Paalalinna school. Reacting to the demand to improve the safety of school children in Lithuania, FingerTec's reseller, SS Solutions has designed a system named as Saugi Mokykla (SAMO) which means in Lithuanian Safe School System to tackle the safety loopholes that could exist in a school environment.

SAMO consists of 3 components, which are, the verification terminal, the barrier gate and the software. For this solution, SS Solutions incorporated Kadex, R2 and m-Kadex to be installed on turnstile barriers as physical protection to limit access to only staff and students who are enrolled into the system into the school. To integrate the system with FingerTec's hardware and the turnstile, SS Solution utilized FingerTec Bio-

Bridge Software Development Kit provided by FingerTec and developed their own web-based solution fully integrated into an electronic diary software unique for the school.

As of today, 11 schools throughout Lithuania have been using the SAMO system involving around 80 units of various FingerTec hardware. Amongst the schools that are using SAMO include KaunoTado Ivanauskas School

6 R2 units, Šeškinė High School 8 Kadex units, Mažeikių Kalnėnų High School 8 units of Kadex, Mickevičiaus School uses a combination of 2 Kadex and 4 m-kadex, and 7 other schools installed FingerTec hardware as its verification system under SAMO.

SAMO will alert parents through an SMS message or an email in cases where their children were tardy or absent from school. Some leeway will be provided by the schools to students whose parents have provided reasons of their absences or lateness to the school.

The system has received rave reviews from the parents and teachers alike because this system has been able to solve various impending problems. Now with SAMO and FingerTec installed, no unauthorized person will be given access to the school grounds without proper authorization and both parents and teachers will be notified if the students were absent or skipped classes. SAMO's also being used as a tool to detect who are in the building in cases of emergency like fire at school. Having a system like SAMO and FingerTec hardware installed leave students with a very small window to commit tardiness in school and the parents will have peace of mind knowing that their children are in good hands.

SS Solutions knows the value of good integration and they utilized FingerTec's BioBridge SDK to their advantage with SAMO. SS Solutions has been FingerTec reseller in Lithuania since 2009, and their office is located in the capital Vilnius. ©





Francisco Medina Keeps Apartment Residents Safe with FingerTec in Dominican Republic

This year E.Threan & Cia, FingerTec distributor in the Dominican Republic Island, includes another company into its growing list of prominent clients. The new client, Francisco Medina, is a company in the Dominican Republic dealing in the construction and building industry. Owned by a Mr. Francisco Medina, the company is based in Santo Domingo, the capital and largest city in the Dominican Republic.



FingerTec R2c


As an apartment builder, Mr. Francisco Medina is interested in up-to-date access control systems as an added feature to his constructions and to increase security for property buyers. With a driven interest for modern technology, Medina contacted E.Threan & Cia to have biometrics access control for each floor of a newly built apartment and to install access control devices on 3 doors connecting the vehicle parking area with the lobby and elevator area.

Taking up the challenge, E.Threan & Cia proceeded to install H2i device in the elevator for fingerprint capture to work alongside the separately acquired floor controller. H3i devices were installed for access control for the vehicle parking area, lobby and elevator.

The H2i offers a high storage capacity and numerous functions despite being relatively small in size. Capable of storing up to 1,500 fingerprint templates, the H2i also offers a card verification method with 10,000 card templates storage capability. The H3i is also compact in size but adds another verification method for a 4-digit password input. The H2i and H3i can be used as a stand-alone solu-

tion best suited for home and private security. Residents of the apartment will no longer worry about lost keys as a simple touch of the finger allows for identity confirmation and access to the building. The H2i and H3i are capable of working in tandem with external built-in alarm systems that, easily alerting residents, management and security in case of emergencies and break-ins.

The use of biometrics verification increases the security measure to safeguard the residents and their property as biometrics are hard to replicate or exploited. And while fingerprint verification can be used to store unit owners' identification, RFID cards can be used for extended family members or permitted guests. The flexibility of the various FingerTec products accommodates a wide range of industry making security easy not only for businesses but for home use as well.

E.Threan & Cia has been FingerTec's distributor for nine years to date and they have installed FingerTec solutions in various locations and clients including Dominican Republic's Judicial Council, Sybaris Residences, and Bagricola Bank. 



REHABILITATION EQUIPMENT INC.
1513 Olmstead Ave. Bronx, New York 10462



A Success Story: Rehab Co & FingerTec USA

Jeff Offner, CEO of Rehab Co has been using FingerTec system for three years now. His New York-based rehabilitation company provides highly customized and complex equipment for people with severe disabilities. As the last independent pure complex rehab equipment provider in the five boroughs of New York City, his firm plays a vital role in the treatment of debilitated individuals looking to improve their well-being and quality of life. Having gone through a number of different time and attendance solutions, finding the right system for his company was a tough challenge.

"Previously we used an electronic time clock with manual cards and the problem was that we just didn't get automatic calculations that were accurate," Jeff shared. The problem Jeff and his team experienced is the most frequently reported reason for people leaving manual systems - time wasted on card calculations and the inevitable occurrence of human error.

Luckily, what was once an unavoidable part of the time attendance process has by large been improved through the development of modern systems such as Biometric clocks.

"Initially I went to one company and tried to use

their software, and it was so bug-ridden. It was impossible to work with unless you were an IT person and also an HR person." Jeff's poor UI experience exemplifies an issue that occurs all too frequently where the average businessperson looking to implement an effective time attendance solution to better manage their workforce found themselves neck-high in confusing technical language, roadblocks, and complex processing.

According to Joel Kohn, the Director of FingerTec's North American Division, using new software shouldn't be a foreign experience for any individual, regardless of experience or expertise.

After a year-long battle, Jeff discovered FingerTec, a system that according to Jeff, was uniquely different in many regards. "After I looked over the requirements, Tech Support kindly went over the software and gave me a demo and that was when I realized that was the system for us." From top to bottom, Jeff felt that FingerTec's service, product and accountability were light years ahead of the competition.

Jeff was all praises for the TCMS V2 software, saying: "I've looked at lightweight products that are okay for supporting a two or three five person team, but not for a company our size. Other devices and software just can't accomplish as much as the TCMS V2 does and FingerTec is arguably miles ahead of everybody else in the industry. The tech support team is one of the best and most helpful technical supports that I have ever encountered, always ready for action and to the point!"

FingerTec USA's support team are comprised of highly-trained specialists that are available to offer remote assistance over the phone or through live chatting to provide service and assistance to clients year-round.

Not only does Jeff appreciate the excellent support service provided by FingerTec, the clocks themselves have benefitted him in a variety of ways. FingerTec's powerful biometric clocks come equipped with fingerprint readers that compute fingerprints using algorithms. "Having the right combination of service and a unique technology is the key to our brand's growing success. Many employees worry that their fingerprints will be uploaded to an invasive system where their privacy will be compromised, however at FingerTec, that isn't the case at all because we use algorithms to process their fingerprints."

According to Jeff, implementing FingerTec's clocks within his business quickly gave him new tools. "By investing in FingerTec, I was able to eliminate buddy punching using the biometric reader and also speed up the payroll process through automatic time calculations," Jeff shared. "Its reporting capability is truly excellent as it shows attendance/lateness trends and we now have a full electronic history of clocking and attendance for legal purposes or to solve employee disputes over their time and attendance records, states Kohn."

FingerTec's ability to offer clients the technology of a powerful enterprise with the personalized support of a mom-and-pop shop is what Jeff appreciates the most. "FingerTec USA is a very user-friendly company and when I call and ask about something they say we can't do that now but we'll put it on the list. FingerTec USA an extremely reliable and reputable company and we are glad to have discovered a comprehensive and effective solution that satisfies all our company needs."




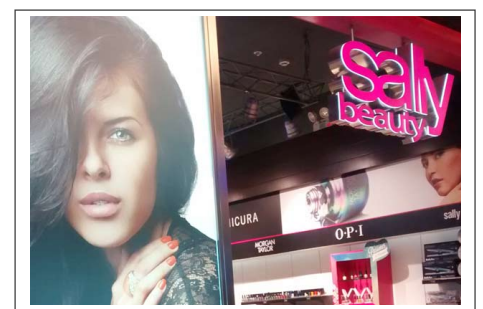
Sally Beauty Peru Stays On Top of Time Attendance and Access Control with FingerTec's Q2i and H2i

With more than half a century's experience in helping women everywhere look their best, Sally Beauty is one of the world's largest international specialty retailer and distributor of professional beauty supplies with over 4,823 stores worldwide (and counting) in over 12 countries. The international beauty product retailer has gone from strength to strength since the opening of its first store in New Orleans, Louisiana with over 10,000 professional salon-quality beauty products offered by the brand. Choosing to grace the sunny shores of Peru with the arrival of their first beauty outlet in 2014, the superstar beauty retailer ushered in a brand new shopping experience for beauty lovers in North America to purchase everything from hair dyes to cosmetics under one roof.

With plans to invest yet another \$10 million to open up another 40 stores in the region, Sally Beauty Peru (SBP) acknowledged that it would be a near impossible task to manage and monitor staff movement and activity perfectly. Hence, investing in a time attendance and access control becomes inevitable. A plan was devised by Galexito Peru to install a Q2i device at the main office together with three more H2i devices that comes bundled with free Ingress software at three other Sally Beauty outlets in Lima to allow HR management to effectively and affordably manage the safety and time attendance of their employees at the main office with more similar device installations underway.

With the Q2i and the H2i in place, Sally Beauty Peru was delighted to achieve total control of time attendance and access control management with the Ingress software which provides a complete solution when centralizing, managing and monitoring door activity in FingerTec access control devices. Running on the familiar MS operating system, Ingress is an easy to use, IT-friendly software suitable for small-scale organization that provides elaborate access control features such as real-time monitoring, database administration and report management all in a single unified system. The Q2i and H2i's three-pronged fingerprint, RFID card and password verification capability allows employees to freely choose their preferred verification method for easy clock-ins where data is easily transferred via a common USB flash disk for stress-free report generation in a variety of formats.

Soluciones Específicas Tecnológicas S.A.C (Galexito Peru) is an established Latin American company with more than 6 years of experience in the land of the gods. Their dedication and hard work in providing top-quality after sales service and to companies and clients seeking for advanced yet effective time attendance and access control solution for their workplace. 



FingerTec Q2i and H2i



FingerTec Solves Pesquera Exalmar's Access Control Problems



Pesquera Exalmar S. A. A. is a company that has long been in the fishing industry that is also dedicated to processing and marketing products such as fishmeal and fish oil. The company's origin dates back to 1976, when Mr. Victor Matta Curotto went into the fisheries business after the acquisition of the Cuzco 4 fishing vessel. Fast forward to the present; Pesquera Exalmar now has a fleet of 51 vessels, with a number of plants dedicated to freezing and processing of products.

Early in 2015, Pesquera Exalmar approached Soluciones Específicas Tecnológicas S.A.C, FingerTec's authorized dealer in Peru, looking for a solution to access control to assist the staff on the fishing ground, since previously the access control brand they used had cause many problems in the bearings and the GPRS network as they did not work well terminals, causing many technical issues and interruptions.

The solution to solve the issue was to install Q2i devices at the site. This however was not as easy as it seems, as there is no Internet connection of the ground. To adapt to this issue, the Q2i devices were set up with RS232 communication cables that were designed specifically to connect to the computers with the interface of FingerTec Data Processor software (FTDP). With this connection established, Pesquera Exalmar no longer faced any problems with their systems and GPRS network.

The Q2i is a device that uses biometrics for verification and also includes RFID card and passcode methods. The FTDP is designed to connect FingerTec terminals to a third party system. This means that a company with preferred software for time attendance and access control can use the FingerTec devices without having to switch software. The connection uses LAN to create an independent system, which is suitable in case of no Internet or GPRS connection.

Soluciones Específicas Tecnológicas S.A.C has long been in the game of providing quality product in security systems, information technology and communications, and process management. The years of experience in handling many customers' demands has made it easy for the company to find the best solution to suit any environment and resolve technical issues.



FingerTec Q2i



TimeTec TA to the Land Down Under with GJK Facility Services



GJK Facility Services is one of the largest privately owned providers of cleaning products and services in Australia. Established in 1985 as a family company whose names were George, John & Kerry, GJK is now a company with a presence in all states and territories capable of providing their customers products and services that include cleaning services nationwide, waste management and recycling programs, sanitary hygiene and medical disposal services, pest control, road sweeping, and many more.

After years of continuous operation, GJK has over 2,000 employees with a headquarters in Melbourne and corporate offices in other parts of Australia. GJK is now a subscriber of TimeTec TA for a time attendance system. The company has assigned 190 of its employees to the system and is using the TA200 Plus PoE with WiFi connection. The TA200 Plus PoE relies on Power over Ethernet for power supply, which comes from a LAN cable connection. With PoE, a device does not need to rely on an adapter for power while simultaneously connect to a network connection and transfer data.


GJK has opted for the perfect device in creating a wireless terminal that reduces connection and wiring issues. The TA200 Plus comes with biometrics technology for fingerprint, passcode and RFID card verifications. TimeTec TA's cloud

solution can add the device as a terminal for the system, and any transaction made at the terminal will automatically become data that is stored in TimeTec TA. Administrators can monitor the clocking activities of each assigned user and view their attendance, which displays information including User ID, day type, schedule number, short hour, remarks, and more.

TimeTec TA lets administrators generate the attendance by using filters that will obtain the exact data range that they are looking for. Reports can also be generated and all is automated making it easy for administrators to view the information. Whether for large or small companies, TimeTec TA will make workforce scheduling and staff management easy as employees can login and view their profile, evaluate their own attendance, generate reports, view documents

shared by the company, and receive announcements on what happens around the company including birthday notifications.

Companies that have a large number of employees or have those that work offsite and at different schedules can easily connect with each individual assigned to TimeTec TA, ensuring that information is properly circulated. A messaging system is also available within the time attendance system for communication between users.

Installing TimeTec TA can be done easily as GJK Facility Services proved by being an end-user and installing the device and system on their own. Cloud solutions are the thing of the future and TimeTec has plans to offer more of cloud. Subscribe to TimeTec Ta and get 10 user licenses FREE for life. 



FingerTec **Answers 8 Weird Questions!**



After more than a decade of traveling the world dealing with marketing biometrics technology, FingerTec team has been bombarded with a bunch of funny yet weird questions coming from various people from all around the world. We list down here 8 most weird questions to date.

Question 1

“Can I use chopped fingers to report attendance?”

Dude, what are you doing with chopped fingers inside your pockets; FYI Acrotomophilia is a mental sickness and to carry it around for attendance is totally mental. FingerTec biometrics terminals do not accept dead fingers; we are always pro-life.

Question 2

“What happen when someone ugly-looking uses Face ID?”

(We swear at least three people asked this question) He/she might wish someone else's name appeared on the screen. With 99.9% accuracy, FingerTec's face recognition terminal will show his/her face and his/her name in a mere second. FingerTec system doesn't discriminate.

Question 3

“My wife complains that she couldn't get her fingers verified when using biometrics system.”

May we suggest that you hire a maid or help around the house, sir? Excessive use of fingers especially when doing house chores with chemicals would destroy the fingerprint ridges on the surface of the fingerprints, making identification of minutiae points difficult. Wash that bathroom yourself sometimes, we suggest.

Question 4

“Do you have any footprint verification machine?”

FootTec is taken and the machine's price would be as large as Shaquille O'Niel's shoe size. People would have to take their shoes and socks off, and it'd make foot fetishists very happy. Looking at the possibilities, we would say no.

Question 5

“Why can't we register 10 faces for a person in Face ID when we can register 10 fingers in your fingerprint devices?”

We do not recommend the use of Face ID for selfies. Face ID is for time attendance and door access system; one face for one person should be sufficient to verify that person's identity but we do provide a maximum of 2 face templates per ID to cater to people who wear glasses, like Clark Kent aka Superman. Register your face with and without glasses in one user ID and you are good to go. And just so you know, each of your finger is different and a system can cater up to 10 fingers as backup in case Question no. 1 happened.

Question 6

“Can these fingerprint data be used for other criminal purposes, like rob a bank?”

Refrain from watching too much Heist movies and Criminal Minds. FingerTec's fingerprint templates have been engineered with a set of algorithm making it suitable for time attendance and door access purposes only and the reverse engineering is not an option.

Question 7

“Some claims that the use of fingerprint machines can cause itchiness. Does the device produce some kind of radiation from the fingerprint scanner?”

Keep Calamine lotion in your bathroom and carry on, even though we know scratching is satisfying. FingerTec's fingerprint scanners do not emit any harmful radiation to humans or animals as it is just LED light and the products have been FCC and EC proved. A visit to a dermatologist is highly recommended.

Question 8

“People say that it's easy to duplicate fingers using silicone and you can use these fingerprints on any device”

FingerTec is hiring. Access to this page: <http://www.fingertec.com/career/> Unless someone has the access to a money vault, nobody is interested to duplicate his/her fingers. And if he/she has the access to a money vault, why do you think he/she needs to report attendance? FingerTec terminals do not accept silicone fingers, we stick to humans.





Some call it CSR,
we call it our R.

Helping people in need shouldn't be in the name of business; it is a value every human should foster.

Over the years, FingerTec has donated to various organizations in need as, we firmly believe that we should be the agent of change no matter how small, be it to the people in need or in support of great cultures and traditions.



We Are **Family!**

One of the greatest basketball players, Micheal Jordan's take on teamwork. "Talent wins games, but teamwork and intelligence wins championships."

And at TimeTec's growing family, love is always around. The spirit of teamwork is well and alive in this establishment and we're proud of it.





Work **HARD**, Play **HARDER**

Dwayne "The Rock" Johnson once said, "Be humble, be hungry and always be the hardest worker in the room"

And the Company appreciates with various incentives and tokens of appreciation sprinkled throughout the year to put great smiles on our faces.



We had fun in the sun & everybody left their wallets in the office! Woohoo!



We Instagrammed our hampers! Jealous much?



Our family is GROWING!



The happiest time of the year!

Scholarship Recipient

Nicholas Khooi

Makes Skill-Building His Worth Investment



TimeTec Computing launched FingerTec Scholarship Program in the early 2015 with the objective to assist talented students achieve their educational goals and become valuable members of the workforce. Having experienced difficulties in finding suitable candidates to fulfill specific workforce requirements, it is one of our responsibilities to help generate more talents for our industry.

Khooi Xin Zhe, nicknamed Nicholas, is the first recipient of the program, currently pursuing his first degree in Bachelor of Computer Science (Computer Systems and Networking) at University Malaya, Kuala Lumpur.

Beyond Biometrics caught up with Nicholas to know his thoughts about FingerTec Scholarship Program and what this program means to him.

What is your reaction to receiving this scholarship?

I felt very proud and happy as to my knowledge, I am the first ever recipient for the scholarship. I am deeply honored.

What made you decide to choose FingerTec scholarship over other scholarships around?

I see TimeTec as a company with great potential to grow big in the near future and I want to be part of this growing company. I see this as a special opportunity to grow together with the company and this is what made me accept this offer after turning down two other overseas scholarship offers earlier this year.

How would this scholarship help you in achieving your educational goal?

Holding a scholarship allows me to completely focus on my studies without having to worry about the financial aspect. Hence, I will have more time to improve and equip myself with more knowledge and skills through participating in various activities and programs also.

What do you foresee challenges you might have experienced in your university years?

Time management. So far being in the university for more than 3 months, there are really a lot of activities that are very interesting and tempting for me to join. Time management became one of the greatest challenges as to keep up with my studies and being able to be involved in various activities too.

Why do you choose University Malaya over other university?

Universiti Malaya's Faculty of Computer Science and Information Technology was ranked as the best among other universities in Malaysia and there is no doubt for me to opt for the best computer science education opportunity in town.

Do you always know what you want to be?

Yes. I have always wanted to be involved in R&D related job fields. Given the chance, I will further my studies until PhD level in my related field.

What is your take on programming as a career? Do you have any famous programmer that you want to emulate?

I believe that programming is a challenging yet fun career because we get to solve various challenges throughout the career and being able to solve complex problems gives me the greatest personal satisfaction. As for famous programmers, I admire a lot of them, such as Mark Zuckerberg of Facebook, Larry Page of Google, but, everyone's style is different, I wish to have my own style. I would not emulate their style but I would try to emulate their achievements, which changed everyone's life with useful technology.

What are your career aspirations and future goals?

I look forward to enhance my profession and develop other relevant skills as well before pursuing my dream to become an academician to share my knowledge and discover new possibilities in my field of expertise in the coming future whereby I want to be actively involved in the researching field.

How do you view companies that offer scholarships to students?

I highly respect companies who offer scholarships to students as it shows that they perform their corporate social responsibilities and appreciate students with good academic and co-curricular performance, which shows that the company favors talent and their intention to grow further with talents.

What were your favorite subjects in school?

STEM-related subjects such as Mathematics and Physics were my favorite subjects. I liked them because they allowed me to do more thinking, understanding and analyzing, as the subject itself is more dynamic compared to others, which require us to memorize a lot of static facts.

What advice would you give to students who want to apply for scholarships in the next round?

Applying and getting for a scholarship is not as difficult as described by many others. As long as you get yourself prepared and keep on improving from time to time. Equipping yourself with various knowledge and being active in various activities are extremely important, because through this, you will get to develop a broad range of soft skills such as leadership skills that companies look for and this maximizes your chances of securing a scholarship. Besides, having a positive character or personality such as being optimistic is also one of the important criteria that scholarship providers look for. Even if you do fail, never give up on applying for scholarships as from time to time, you will learn from your failure and surely you will get your chance in the nearest future. 🍀



FingerTec Scholarship Program
www.fingertec.com/scholarship/

PC Mart Taking FingerTec to Every Corner of Malaysia



PC Mart Sdn Bhd (374159-W)
Customer Satisfaction, Our Dedication.

PC Mart Sdn Bhd has long been a part of the FingerTec family and is one of the leading resellers throughout Malaysia. Established in 1996, the company focuses in providing business software and hardware for small and medium size enterprises SME and has gained a number of prominent clients along the way. Aside from FingerTec's Time Attendance and Door Access System, PC Mart also offers various products such as UBS software, cheque-writing software, and web-based leave management system among others.


As PC Mart continues its dedication in bringing the best of office management solutions to companies and organisations nationwide, its clientele continues to expand at high speed. Earlier this year, one of PC Mart's most successful installations was featured in our Global Highlights featuring the installation of TA100C terminals for ARIANI, a highly successful fashion brand that has multiple branches all over Malaysia including Kota Kinabalu, Johor Bahru, Alor Setar, and Tanah Merah among many others. Using TA100C for a time attendance system has helped in reducing attendance and fraud issues that come with the

manual system used previously that is prone to human error. The combination of the TA100C and the TCMSV2 software creates an automated system that uses biometrics verification and data collection and output.

Another member of PC Mart's clientele is Zensho Foods Malaysia Sdn Bhd, part of Zensho Co., Ltd., a Japan-based company that owns various restaurant chains in the region and with branches overseas. The restaurant chain, Sukiya, now has 5 stores in Malaysia and all of them are now using FingerTec's AC100C for time attendance system. To better serve Japanese comfort foods while

adhering to Islamic law and food preparation to cater to Malaysia's majority Muslim population, Zensho Foods Malaysia uses the AC100C to better manage and monitor the staff's performance. The AC100C is a user-friendly device that is equipped with biometrics technology and also features easy data management with the bundled TCMSV2 software.

Staying true to the company's vision and mission, PC Mart has handled more installations within the past few months such as the installation of FingerTec's R2 and R2i door access and time attendance system for the Nilai branch of Global Amity Sdn Bhd, an authorised 3S Honda dealership. Other installations include Face ID 2 time attendance system for Universiti Teknologi MARA (Penang), 5 sets of TA102C for Sasbadi Sdn Bhd, and Face ID 3 for Budi Feed Sdn Bhd.

PC Mart is definitely on the roll in providing companies throughout Malaysia with the best of time attendance, payroll, and other business solutions. With years of experience in the industry and a professional and dedicated outlook, you can bet that PC Mart has more to offer in the years to come. 



ITQAN FINGERPRINT CO. Securing Saudi One Biometrics Product At A Time

ITQAN is a system supplier and installer in Kingdom of Saudi's Eastern Province, providing high technology requirements for small, medium to large companies nationwide since a decade ago. The company is operated by a group of certified and qualified Engineers in the field of networking, communication, security and access control solution, offering high-end quality brands like FingerTec among many others.

Since 2009, ITQAN has propelled FingerTec to a new level of acceptance in the Saudi's security and office automation market. FingerTec has been known to make things easy for its resellers to market its products and brand by providing ample marketing resources to support the sales and marketing activities. This has helped ITQAN expedite its penetration into the market with FingerTec. "It is our plan to double the sales of FingerTec's products and increase our market share in Saudi in the near future," says Er. Mohammed Ewidah, their Sales Manager in charge of FingerTec's marketing. "Over the years, our resellers have been able to sell FingerTec systems not only in the retail market and to the private sectors, but we also have been able to perform large installations in various government sites including 35 pieces of Face ID 2 installed by Tammam Co., 35 pieces of AC100C by Ogertel and 30 pieces of AC100C by GTec, which we are truly proud of." The quality of the FingerTec system fitted the tight requirement of these government projects, coupled with dedication from ITQAN's team, FingerTec has been able to make its mark in Saudi particularly in Dammam and Riyadh. Having around 125 odd resellers around the country, ITQAN keeps its marketing strategies intact and effective.

"We mix and match the new and old strategy to hit both spectrum of our potential clients," Er. Mohammed Ewidah. The company participated in various trade shows around Dammam and Riyadh, advertised in local newspapers of these two major cities, and they also pay attention to the social media marketing. So far ITQAN's Facebook followers are reaching 7,000 mark and they are getting updates of successful installations and updates throughout the year. To add to market excitement, occasionally they will send marketing campaign and promotions through emails about products and discounts they offer.

Similar like FingerTec, ITQAN believes in good customer support, in both sales and technical. "With that in mind, we sent our engineers to have training at the headquarters in Malaysia to receive first-hand experience in dealing with the products technical support and repair. We are confident that with the experience our team can better support our clients nationwide," stressed Mohammed. As at now, Face ID 2 is the most popular reader for ITQAN's clients because in the industrial areas, contactless reader is preferred.

Though at this point in time FingerTec is supplying fingerprint and face biometrics systems, ITQAN is hoping to see other biometrics like iris, palm, and readers with IP65 weatherproof capability and mobility. "There are room for improvements for FingerTec and us but at the end of the day, we know they are with a good company that always provide good online support, great warranty period, amazing marketing plans and best of all, quality products and software", ends Mohammed.

ITQAN continues to be one of the prominent global FingerTec distributors and moving forward FingerTec and ITQAN will be working hand in hand to not only pushing biometrics hardware solutions, but we hope to be the first effective cloud solution provider in the nation. [e](#)



MAGNUM DUBAI

Betting on Cloud Solutions



Magnum Connect Connect FZCO, a Dubai company established in 1999 is FingerTec's main distributor in the UAE since 2005. The company is an expert in the field of infrastructural cabling, networking, audio video, and office automation; supplying not only hardware solutions and technical expertise, but also consultancy and IT requirements to various vertical industries and channels across the Middle East, Africa and a few countries in Asia.

"In two years time, we want to be one of the three major leading time and attendance solution providers in physical and cloud-based solutions with FingerTec and TimeTec solutions," explained Mr Mayur Haresh, Assistant Manager at Magnum Connect. For FingerTec brand, the company plans to organize road shows nationwide targeting enterprise clients, to introduce them to the product lines and share the company's future plans. "It's one thing to target channel partners which we have already done quite brilliantly, but it's also important to create awareness amongst potential target customers."


Having more than 50 channel partners nationwide, this is the key strategy deployed by Magnum Connect to distribute FingerTec products

across the Emirates. "We want to reach out more effectively (to partners), making them aware of the type of pre and post sales support available when they distribute FingerTec products", explained Mayur. Through emails and meetings, partners are constantly updated on the latest FingerTec's models and solutions to serve the clients better.

Over the years Magnum Connect Connect, in collaboration with its channel partners have installed FingerTec solutions to various companies and institutions around the country including school, retail outlets and government offices.

Moving forward, Magnum Connect will work closely with FingerTec to market TimeTec TA, time attendance cloud solutions into Dubai's

market. "People are familiar with the cloud concept but there are a few issues which we have to pay attention to in order to gain a good standing as a cloud provider," said Mr Feroz, Magnum Connect Connect's Business Development Manager. Magnum Connect itself is not new in the cloud business. They also conduct cloud storage business in the region, hence are very familiar with the issues of cloud deployment. "We are very excited about TimeTec TA because we believe that eventually the market will be attracted to cloud," assured Feroz. Apart from pushing hardware products, the company will put focus on TimeTec TA not only to their existing clients but also to create demands in other sectors of the market.

Magnum Connect's expertise in IT makes the marketing of FingerTec products through them a breeze. Housing over 180 engineers and IT experts, the company continues to dominate the UAE with biometrics solutions from FingerTec and in the future, cloud solutions. 





RADIOCOM Going Strong with FingerTec in DR of Congo

Radiocom is built on the principles of providing genuine products, right pricing, and to strive for customer satisfaction. The company has over 18 years of experience to its name in supplying IT, office automation and communication products to corporate houses, NGOs, and Government. Radiocom has become the premier name in the Democratic Republic of Congo for IT and communication equipment. With the company goal of being the number one security and surveillance company in the DR Congo and Western Africa, Radiocom's accomplishments in the industry proves that goals are achievable.

In 2014 the company had reached a new milestone by including FingerTec as one of its partners that consist of the world's leading brands including Hikvision and COM-MAX for security and surveillance solutions, DELL, Motorola, HP, Lenovo, Microsoft, and Ricoh. According to Mr Kesava Prasad Koyilath, Manager of Sales and Business Development Security, Surveillance and Safety Products, FingerTec has seen a tremendous change in product range and is widely accepted by the company's many clients. With 45 distributors and more than 100 dealers registered with the company, it's safe to say that FingerTec products are in good hands.

Radiocom has taken an aggressive approach in promoting FingerTec products in the region, going all out with billboard advertisements and mass mailers. Part of the company's marketing strategies includes door-to-door marketing and telemarketing while also offering weekend promotions and free demos to create an awareness of the FingerTec brand. FingerTec has never been shy in sharing the knowledge that concerns the industry and has produced various materials to spread information on the brand and products to ensure that the public can trust in FingerTec's reliability.

Within a short span of time, Radiocom has successfully completed more than 50 installations of FingerTec products. Based on the approach taken by the company in providing its services, it's highly predictable that the number of installations will continue to grow as more clients are drawn to products that promote user-friendliness, holistic systems, and the support to tackle issues head on. Some of the proudest accomplishments by the company include providing their services to Hospital Du Cinquantenaire, the largest hospital in DR Congo and Hotel Kempinsky, a five star hotel that is part of the international luxurious hotel chain with over 75 five star hotels in 30 countries.

We expect to see more great news to come from Radiocom in all its endeavours as well as its partnership with FingerTec. And with the dedication and professional outlook in satisfying their clients' needs great news will come as no surprise. ☺

FINGERTEC
www.fingertec.com

timeTec
www.timeteccloud.com

We provide
Cloud
applications &
Biometrics
Security
solutions



Face ID 3



R3



R2



R2c



TA100C



Kadex

Global Reseller Program

• Conclude Sales Fast • Reduce Support Cost • Get Better Profit

Welcome to our Global Reseller Program, an effective reseller program formulated with two clear objectives: to conclude sales in no time, and to reduce support costs for a more profitable operation. Using 4 simple modules and 8 useful microsities, FingerTec Global Reseller Program is tailor-made to fulfill all the requirements of a reseller. Let's walk through what FingerTec has for you as our Global Reseller.



Online Sales Resources

Welcome to sales.fingertec.com to view FingerTec's new and refreshing approach to sales and marketing strategies. In this era where people expect fast reply with complete information, an effective sales pitch complete with relevant marketing materials are extremely important to convince the clients and seal the deal. With that understanding, we have prepared a list of marketing materials at your disposal to achieve your performance goals, meet your sales targets and get an edge over your competitors.

Sales Materials

- Video Demonstrations
- PowerPoint Presentations
- Product Factsheets

Sales References

- Distributor Guidebook
- Success Stories
- Image Banks

Useful References

- Certifications
- Awards
- Global News
- Monthly E-Newsletters

Sales Materials

Save your time, get professional looking sales materials, presentation kits and supplementary marketing materials directly from us free of charge at material.fingertec.com. If you want to customize the materials to reflect your business and make them into the language of your choosing, contact us at info@fingertec.com and we'll entertain you happily. From brochures to bunting to posters to videos, demokits and many more, get them from FingerTec easily.

Product Listing

Visit us at product.fingertec.com to obtain information about our FingerTec products down to the technical specifications, features and capabilities. Browse our one-stop centre for all FingerTec products for your access control, biometric time attendance hardware and software needs and make smart decisions with us!

User Support

FingerTec does not only support you as our reseller, we also extend our service to the end-users. Promote user.fingertec.com to your customers and let them experience the amazing service that we have laid out for them. Check our exhibition schedules, read product reviews, register warranty, obtain technical support and much more.

Accessory Listing

In need of accessories to accompany your FingerTec products? Look no further as accessory.fingertec.com provides various types of accessories to compliment the products.

Product Training

Register at training.fingertec.com to gain first-class access to quality, up-to date and ongoing sales education and training through our online webinars that cover 3 major topics on sales, product and technical trainings. Connect to our webinar training program and participate in presentations, discussions and Q&A sessions all from the comfort of your home or office! Equip yourself for success with our tried-and-tested tools and tactics to help you further hone your sales acumen and develop a solid plan of attack today!

Technical Tips

Having technical issues? Need help troubleshooting? Not to worry. Access FingerTec's tips.fingertec.com and browse to find the answers to your problems. Our technical team is always on standby in Skype to answer your questions or you could drop them an email at support@fingertec.com. The technical service is available 24/7/365.

Global Product Warranty

Our resellers and end users are our greatest customers. To find out more about our Spare Part Allocation Scheme, Standard Limited Warranty and Product End of Life Policy, make your way over to warranty.fingertec.com and trust in us to ease your concerns.



Additional Advantages

- 36-month manufacturer limited warranty.
- Complimentary Powerful Software with Multilanguage Selection.
- FingerTec TCMS V2 Viewer for access into attendance data via LAN.
- Inclusive of FingerTec Data Processor (FTDP) for extraction of raw data.
- Free BioBridge System Development Kit (SDK) for third party software integration.
- Quality Lead Referrals.

This Program Applies To

- Office Automation Industry.
- Security/Physical Access Control Industry.
- Solution Providers who are interested to add fingerprint technology.
- Time Attendance Industry.



How To Become A FingerTec Reseller

- Buy Sample Units to test the technology, to understand the system, and to experience what FingerTec has to offer. Visit www.fingertec.com/sample-pack for more info.
- Determine the level of commitment you prefer as a FingerTec reseller.
- Start your business and enjoy all the benefits from FingerTec Global Reseller Program. Get started now by sending an email to us at info@fingertec.com.

Cloud-Centric Business

The Trend of the Future or Just a Passing Trend?



*Mrs. Norana Johar,
Group Chief Operating Officer,
FingerTec HQ*

The story started when my boss was talking about a 'crowd' trend that was going to hit the world by storm. Digging deeper, I couldn't quite grasp the concept; perhaps it's the technology that gathers crowds for something or a technology which, you can ask a certain crowd to perform something for you. The rule of thumb is, when you failed to listen properly, pretend as if you did. On one fine day, I realized that probably I'd been inflicted with ear infections because he was actually talking about cloud technology and I wasn't really switched on because naturally I'm not in tune with any software products. And that's how our cloud journey begins...

Prior to 2012, the crux of our business has always been the hardware. Changing course to pay attention to software product was a difficult process not only for us but also for our clients. However, with the little experience and knowledge we have, we marched on to build our time attendance solution on cloud with cloud-centric concept in mind. The journey was far from easy simply because in cloud ecology, everything happens in real time and user experience has to be on point to your majority clients because with cloud, the customers can experience the product first hand and the reviews (good or damaging) can be instantaneous. As we went along, we learn the rhythm, we sync our strategies, we improve our solutions and at the same time we pray that this cloud technology is not merely a passing trend.

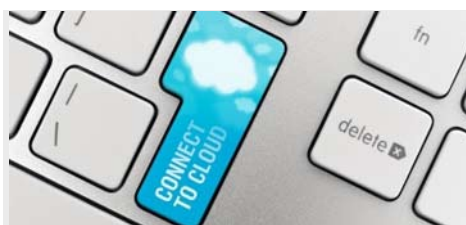


Just so happen,
the world is with us on this one

Forbes magazine tweeted in April 2015 that 47% of marketing departments would have 60% or more of their applications on a cloud platform in two years. A report titled State of the Cloud Computing 2015 published that the cloud computing market will reach \$127.5 billion in 2018. Facebook purchased Instagram, a photo sharing app at USD1 billion in 2012, Google bought Waze, a social navigation application at USD1.3 billion in 2013, the app that practically put conventional GPS business to sleep, and Dropbox, cloud file sharing service is being valued at USD15 billion to

date. While these services do not put cloud as its descriptor, they are cloud solutions that are being used on a daily basis around the world.

And when talking about cloud solutions, mobility and mobile solutions must be in proximity. The Internet of things is no joke, it's happening rapidly and Forbes recently reported that the number of devices connected to the Internet is forecasted at 40.9 billion for 2020. Now, everybody is connected to the Internet not from the PC but from other gadgetry that are online.



The trick is not to be
just another cloud solution
and not to be fixated on
cloud prefix

The success of cloud solutions is very much dependent on its user-experience as much as on its features and functions. Security is still regarded as the main pitfall for cloud computing even though in truth it is very much dependent on the chosen provider and the experience people receive.

It's imperative for cloud-centric solutions to flow like water in a river, smooth, purposeful and fun to gain credibility and loyalty of its users.

Cloud solution simplifies process, promotes transparency, data accuracy and efficiency all at the same time. It's rather mindboggling if it is not a preferred solution moving forward in business, the

only deterrent is the quality of the application being used. Enterprises' highest expectations when moving to hosted services or cloud computing is gaining improved technology quality on platforms and applications (22%), helping to grow the business (18%), improved availability and better business service (13%).

TimeTec is betting on Cloud, we are going to ride this trend into the future because we believe that connectivity is the key to productivity and cloud has made that possible. Our challenge now is to present to our customers the best ever solutions that they cannot do without. ☺



CLOUD COMPUTING

The Future of Cloud Computing: \$127 Billion Market By 2018 [REPORT] -
<http://dazeinfo.com/2015/07/01/the-future-of-cloud-computing-127-billion-market-by-2018-report/>

The future of Cloud computing Read more:
<http://www.itproportal.com/2015/10/21/the-future-of-cloud-computing/#ixzz3sOLqIN1e>

Internet of Things by the Numbers:
<http://www.forbes.com/sites/gilpress/2014/08/22/internet-of-things-by-the-numbers-market-estimates-and-forecasts/>



timeTec
www.timeteccloud.com

RoadMap of TimeTec Research & Development Team



*Mr. Daryl Choo,
Chief Technology Officer
FingerTec R & D Center Cyberjaya*

This year marks a great transformation within the TimeTec's R&D team. Growing almost 120% in workforce, our team works tirelessly to keep up with the company's rapid software development process while simultaneously trying to achieve the bold vision in building a fully integrated and open Cloud Platform. With the CMMI defined process model, we are able to manage the resources more efficiently and effectively and it has become a useful amazing tool in the need of the ongoing recruitment trend for TimeTec R&D team while taking on the challenging tasks ahead.

The TimeTec R&D team's structure is dynamic; loaded with passionate, task-oriented and dedicated people. The Cloud development team is dominating the space with a total of 11 experts ranging from Senior System Analyst, Senior Cloud Developer, Programmer, Database Analyst, etc; who are responsible for the entire development of the Cloud platform and Cloud applications of the company. Besides the ongoing enhancements and bug fixes, the team is also handling TimeTec Notification, Organization Structure, FingerTec Cloud Center(FCC), Software Development Kit, Big Data analysis and many other projects. Apart from the daily development of the main TimeTec application, TimeTec TA, the team has been able to introduce FCC, the most innovative and convenient way to centralize terminals' data securely on cloud, provided as an added service for FingerTec's clients around the world. In the pipeline, the team will be handling other cloud solutions for patrol, recruitment, leave and visitors management which will be consolidated and integrated into our TimeTec Cloud platform. 2016 is already looking busy for the entire Cloud Team with all the projects in the pipeline.

Mobile/APP development is another development team that the IT world cannot do without. This team focuses on the latest mobile development technology for both Apple (IOS) and Google Android. All mobile developments are closely integrated with our existing solutions such as Door Access Control System (Ingress) and TimeTec TA, providing an easy way for our customers to perform operations and monitoring tasks through mobile devices. To keep up with the latest trends and user experience on mobile, our mobile solutions integrate GPS tracking and NFC Check-In methods in its future offerings. A major revamp on the existing Ingress Mobile app and TimeTec Mobile app have been completed and are moving forward. We are looking to build more useful mobile apps for our upcoming release of other cloud solutions.


One of the major successes of FingerTec worldwide has been greatly contributed by its powerful time & attendance software, TCMS V2 and its door access control system Ingress that have been bundled with FingerTec's terminal as a free solution. The Ingress software, launched in early 2013 has achieved almost 400% software activation growth in 2015 compared to the previous year. A development team of 4 dedicated people are responsible for the updates and improvements for the entire Ingress software. Based on the results of our recent survey on Ingress, we decided to take on Ingress Web Version in 2016. Believing customer feedback is key to our development planning, the increasing demand for Ingress Web Version cannot be overlooked. Through the success, challenges and experiences gained from the development of Ingress, the team is working on a refreshed version of a simplified Time Attendance Software, which will be announced anytime soon. Ultimately, the plan is to allow all our software us-

ers to be able to connect to our TimeTec Cloud applications for its data consolidation and control.

Last but definitely not the least, are our Software Quality Control(QC) Team and Infrastructure Team. The Software QC Team is responsible to verify and validate all the software features and functions before its release, and the process includes installation testing, compatibility testing, functional testing, security testing, alpha & beta testing, load testing and etc. For the Infrastructure Team, they are in charge of the IT security, cloud deployment and setup, network design as well as new cloud technology on Amazon Web Services (AWS). The Infrastructure Team is also working on research for Hadoop Cluster, Container services and more for our future enhancements and development on Cloud Technology and Big Data Analysis.

On other development, we are also dealing with cloud surveillance and neighborhood visitor management system led by EpiCamera Sdn Bhd, our sister's company's development team

under the helm of Mr Barry Chai, the COO. With the team of 9 programmers, the company has developed EpiCamera Cloud Surveillance Solution and i-Neighbour Cloud Visitor Management Solution ready for market consumption in early 2016. Next year, EpiCamera will be dealing with P2P technology for EpiCamera, further integration with neighbourhood visitor management system, point-of-sales system and security related solutions.

The TimeTec R&D team is now fully established to support the entire processes and requirements of the TimeTec business. After we have recruited and built the entire R&D team, it is crucial for us to monitor their performance and ensure that the workflow fully follows and complies with our CMMI predefined process. With this arrangement, it is our hope that we could grow in tandem with the company's direction and vision to be a successful Cloud-defined and Software-defined development company. Godspeed. 





Stay Ahead in the Game with **CLOUD SOLUTION**



*Mrs. Nattalina Zainal,
Marketing Manager,
FingerTec HQ*

When the cloud computing concept was introduced, the optimists predicted that it would diminish the IT departments, that do-it-yourself cloud solutions would take control in various aspects of business, and it would happen in an instant. The reality is, many are still holding on to the conventional way of doing things when it comes to solutions for businesses, they are still contemplating whether to join the cloud parade or be the spectator.

In these recent couple of years, cloud services have been gaining more attention than ever due to their advantages; flexibility, scalability, efficiency, accessibility, you name it. So the question is, why the hesitance?

Data is **Gold**



Keeping business data is equivalent to saving money in the bank. And like a bank, having a tight security is not an option; it's a requirement. Generally most of the security on cloud is reliable and efficient, and it's very much dependent on the cloud provider. A survey by RapidScale showed that 94% of businesses saw an improvement in security after switching to the cloud, and this is due to various factors including lower capital expenditures, smarter usage, and increased capacity. Our solution, TimeTec runs on the Amazon EC2, which offers a highly reliable environment with 99.95% availability at all times and all data are backed up regularly and our infrastructure is monitored live by Amazon CloudWatch to prevent potential problems from occurring. Collaboration with Amazon is not a calculated move for us, please read on their take on security at <https://aws.amazon.com/security/>

So it's just another software, **why cloud is different?**



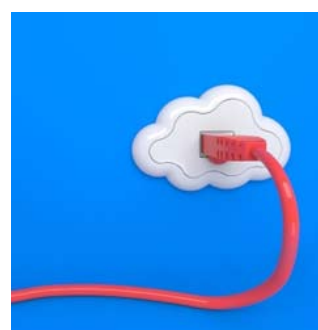
Throwback to how you got into your work emails in the 90s, and now please check your Gmail. Get it now? Both are emails but Gmail offers you so much more with all-time accessibility and space so huge you can accept tons of emails from your family and friends everyday and is so secure that you have no need to worry when Gmail-ing. That's the difference! Coming back to our solution, all features in the conventional time and attendance solution TCMS V2 are included but not all features we offer in TimeTec TA are available, or could be, made available in TCMS V2 such as multitenancy, remote accessibility, real time data, etc. Knowing that you don't have to install from the CD to access the software has already made you crack a smile. Cloud is definitely not offering just another software; cloud is offering dynamic software that suits today's workforce's lifestyle and requirements.

If it ain't broken, **don't fix it**



That's the mentality of people who are afraid to explore the future. Change is not necessarily hard but many people view change as troublesome because it requires tweaking with the way things are. This is where developers of cloud need to pay attention to provide users the smooth experience they require. The transition should be effortless; user-experience must be positively reinforced for trust between users and the solutions to be built. We do just that at TimeTec. The migration tool is in place and our technical support team is on standby to assist in case of any hiccups experienced. When assistance and guidance is suffice, moving to a new and better 'house' will be a happy experience, don't you agree?

Once you go cloud, **you'll never be unclouded again**



Familiarity is complacency. If a system can improve the way of doing business, the stalling is just causing the business more loss as the days go by. Scrap that fear by trying. Most of cloud software come with a free trial period where you can use it to get familiar with the system first hand. TimeTec offers 30 days trial for everyone to try and experience TimeTec TA first-hand. And to put cherry on top, we offer 10 user licenses free for lifetime, to prove that once you go cloud, you'll never be unclouded again.



Cloud technology has changed the way we live, the way we view the world, the way businesses operate. For those who have doubts, I bet you have been using cloud in many ways than you realized. Gmail, Waze, Instagram, Dropbox, YouTube, Pinterest, and the list go on. Don't be a cloud-phobic. It's time to go bold and experience cloud in your business and stay ahead in the game. 🍷



Fingerprint and Card Access Control & Time Attendance Model

FingerTec access control devices are specifically made to manage door accessibilities at your work or home area. These access control models are able to support fingerprint, card, password, or any combination of the three methods as a means of controlling access in a secured area. All FingerTec access control and time attendance models come with a complimentary copy of the powerful *Ingress* software to implement a more advanced access control system. *Ingress* can also be substituted with the *TCMS V3* software for customers that mainly require time attendance functions.



SPECIFICATIONS

MODEL	AC900	R2	R3	R2c (Slave)	H2i	Q2i	i-Kiosk 100 Plus
SURFACE FINISHING	Acrylonitrile butadiene styrene (ABS)	Acrylonitrile butadiene styrene (ABS)	In-mould labelling (IML), poly carbonate (PC) & (ABS)	Acrylonitrile butadiene styrene (ABS)	Acrylonitrile butadiene styrene (ABS)	Acrylonitrile butadiene styrene (ABS)	Acrylonitrile butadiene styrene (ABS)
TYPE OF SCANNER	Non coated optical scanner	Non coated optical scanner	Non coated optical scanner	Non coated optical scanner	Non coated optical scanner	Non coated optical scanner	Non coated optical scanner
MICROPROCESSOR	400 MHz	400 MHz	400 MHz	Managed by master	300 MHz	800 MHz	600 MHz
MEMORY	128 MB flash memory & 32 MB SDRAM	128 MB flash memory & 32 MB SDRAM	256 MB flash memory & 32 MB SDRAM	Managed by master	256 MB flash memory & 32 MB SDRAM	256 MB flash memory & 64 MB SDRAM	256 MB flash memory & 64 MB SDRAM
ALGORITHM	BioBridge VX 9.0 / VX 10.0	BioBridge VX 9.0 / VX 10.0	BioBridge VX 10.0	Supports BioBridge VX 10.0	BioBridge VX 9.0 / VX 10.0	BioBridge VX 9.0 / VX 10.0	BioBridge VX 9.0/VX 10.0
DIMENSION (L X W X H), mm	91 x 40 x 190	94 x 50 x 189	78 x 32 x 190	64 x 42 x 135	78 x 50 x 150	200 x 56 x 160	260 x 70 x 320
STORAGE							
• Fingerprint templates	1500	3000	3000	Storage in master terminal	1500	10000	10000
• Transactions	100000	120000	100000	Storage in master terminal	100000	200000	200000
ENROLLMENT & VERIFICATION							
• Methods	Fingerprint (1:1, 1:N) & password	Fingerprint (1:1, 1:N) card & password	Fingerprint (1:1, 1:N) card & password	Fingerprint (1:N) & card	Fingerprint & card	Fingerprint (1:1, 1:N), card & password	Fingerprint (1:1, 1:N), card & password
• Recommended fingerprint per user ID	2	2	2	Managed by master	2	2	2
• Fingerprint placement	Any angle	Any angle	Any angle	Any angle	Any angle	Any angle	Any angle
• Verification time (sec)	< 1	< 1	< 1	Managed by master	< 1	< 1	< 1
• FAR (%)	< 0.0001	< 0.0001	< 0.0001	Managed by master	< 0.0001	< 0.0001	< 0.0001
• FRR (%)	< 1	< 1	< 1	Managed by master	< 1	< 1	< 1
CARD TECHNOLOGY							
• RFID: 64-bit, 125kHz	X	Yes	Yes	Yes	Yes	Yes	Yes
• MIFARE: MF1S50/S70, 13.56MHz	X	Made to order	Made to order	Made to order	Made to order	Made to order	Made to order
• HID: HID 1325, 26-bit, 125kHz	X	Made to order	Made to order	X	Made to order	Made to order	Made to order
COMMUNICATIONS							
• Method	TCP/IP, RS232, RS485	TCP/IP, RS232, RS485, USB disk	TCP/IP, RS232, RS485, USB disk	RS485	TCP/IP, RS485, USB disk	TCP/IP, RS232, RS485, USB disk <i>(Optional WIFI, GPRS & 3G)</i>	TCP/IP, RS232, RS485, USB disk & WiFi
• Baud rates	9600~115200	9600~115200	9600~115200	X	9600~115200	9600~115200	9600~115200
• Wiegand	26-bit output	26-bit input/output	26-bit input/output	X	26-bit input/output	26-bit input/output	26-bit input/output
OPERATING ENVIRONMENT							
• Temperature (°C)	0 ~ 45	0 ~ 45	0 ~ 45	0 ~ 45	0 ~ 45	0 ~ 45	0 ~ 45
• Humidity (%)	20 ~ 80	20 ~ 80	20 ~ 80	20 ~ 80	20 ~ 80	20 ~ 80	20 ~ 80
• Power input	DC 12V 3A	DC 12V 3A	DC 12V 3A	Managed by master	DC 12V 3A	DC 12V 3A	DC 12V 3A
TIME ATTENDANCE							
• Siren	X	X	X	X	X	Built-in <i>(Optional external)</i>	Built-in
• Work codes	Yes	Yes	Yes	X	X	Yes	Yes
MULTIMEDIA							
• Voice	X	Yes	Yes	X	Yes	Yes	Yes
• Display	Black and white	Black and white	2.4" 3k color LCD	X	X	3.5" 65k color TFT screen	8.0" 65k color TFT touch screen panel
• Short messaging	X	Yes	Yes	X	X	Yes	Yes
• Music playback	X	X	X	X	X	X	Yes
• Movie playback	X	X	X	X	X	X	Yes
• Internal backup battery	X	X	X	X	X	X	Yes (DC 12V 2000mAh)
ACCESS CONTROL							
• EM lock driving output	DC 12V 3A / relay output	DC 12V 3A / relay output	DC 12V 3A / relay output	Managed by master	DC 12V 3A / relay output	DC 12V 3A / relay output	DC 12V 3A / relay output
• Alarm output	NO	NO/NC	NO/NC	Managed by master	NO	NO/NC	NO/NC
• Anti passback	X	Yes	Yes	Managed by master	Yes	Yes	Yes

*X = Not Applicable | All master terminals come packaged with FingerTec software.





Fingerprint Time Attendance Model

FingerTec time attendance biometric models are ideal for most companies that are looking to track, monitor, and analyze staff attendance effectively. Sturdy in design, all the models come with a complimentary copy of the comprehensive attendance software, *TCMS V3*, or it can be used with the changeable applications, *TimeTec Web* and *TimeTec TA*, for more elaborate and extensive management features.



SPECIFICATIONS

MODEL	TA300	TA500	AC100C	TA100C	TA200 Plus
SURFACE FINISHING	Acrylonitrile butadiene styrene (ABS)	Acrylonitrile butadiene styrene (ABS) & Polycarbonate (PC)	Acrylonitrile butadiene styrene (ABS)	Acrylonitrile butadiene styrene (ABS)	Acrylonitrile butadiene styrene (ABS)
TYPE OF SCANNER	Non coated optical scanner	Non coated optical scanner	Non coated optical scanner	Non coated optical scanner	Non coated optical scanner
MICROPROCESSOR	400 MHz	360 MHz	800 MHz	800 MHz	800 MHz
MEMORY	8 MB flash memory	128 MB flash memory & 16 MB SDRAM	256 MB flash memory & 128 MB SDRAM	256 MB flash memory & 128 MB SDRAM	256 MB flash memory & 32 MB SDRAM
ALGORITHM	BioBridge VX 9.0 / VX 10.0	BioBridge VX10.0	BioBridge VX 9.0 / VX 10.0	BioBridge VX 9.0 / VX 10.0	BioBridge VX 9.0 / VX 10.0
DIMENSION (L X W X H), mm	160 x 120 x 127	184 x 38 x 134	195 x 48 x 144	190 x 52 x 140	200 x 56 x 160
STORAGE					
• Fingerprint templates	1500	2000	8000	8000	10000
• Transactions	50000	80000	200000	200000	200000
ENROLLMENT & VERIFICATION					
• Methods	Fingerprint (1:1, 1:N) & password <i>(Optional RFID Card)</i>	Fingerprint (1:1, 1:N) & password <i>(Optional RFID Card)</i>	Fingerprint (1:1, 1:N) & password	Fingerprint (1:1, 1:N) & password <i>(Optional RFID Card)</i>	Fingerprint (1:1, 1:N) card & password
• Recommended fingerprint per user ID	2	2	2	2	2
• Fingerprint placement	Any angle	Any angle	Any angle	Any angle	Any angle
• Verification time (sec)	< 1	< 1	< 1	< 1	< 1
• FAR (%)	< 0.0001	< 0.0001	< 0.0001	< 0.0001	< 0.0001
• FRR (%)	< 1	< 1	< 1	< 1	< 1
CARD TECHNOLOGY					
• RFID: 64-bit, 125kHz	Made to order	Made to order	X	Yes <i>(TA100C-R only)</i>	Yes
• MIFARE: MF1S50/S70, 13.56MHz	Made to order	Made to order	X	Made to order <i>(TA100C-MF only)</i>	Made to order
• HID: HID 1325, 26-bit, 125kHz	Made to order	X	X	Made to order <i>(TA100C-HID only)</i>	Made to order
COMMUNICATIONS					
• Method	USB cable	TCP/IP, USB disk	TCP/IP, USB disk <i>(Optional RS232, RS485, WiFi & GPRS)</i>	TCP/IP, USB disk <i>(Optional RS232, RS485, WiFi & GPRS)</i>	TCP/IP, USB disk <i>(Optional RS232, RS485, PoE, WiFi & GPRS, 3G only applicable to non-PoE devices)</i>
• Baud rates	X	X	9600~115200	9600~115200	9600~115200
OPERATING ENVIRONMENT					
• Temperature (°C)	0 ~ 45	0 ~ 45	0 ~ 45	0 ~ 45	0 ~ 45
• Humidity (%)	20 ~ 80	20 ~ 80	20 ~ 80	20 ~ 80	20 ~ 80
• Power input	DC 5V 800mA	DC12V 1.5A	DC 5V 2A	DC 5V 2A	DC 12V 3A, DC 5V 2A <i>(PoE)</i>
TIME ATTENDANCE					
• Siren	X	Yes	X	Built-in and external	Built-in <i>(Optional External)</i>
• Work codes	X	Yes	Yes	Yes	Yes
MULTIMEDIA					
• Voice	Yes	Yes	Yes	Yes	Yes
• Display	Black and white	2.8" color TFT screen	3.0" 65k color TFT screen	3.0" 65k color TFT screen	3.5" 65k color TFT screen
• Short messaging	X	Yes	Yes	Yes	Yes
• Music playback	X	X	X	X	X
• Movie playback	X	X	X	X	X
• Internal Backup Battery	Yes (DC5V 1300mAh)	Yes (2-hours working, 4-hours standby)	X	X	X



RFID Card

Access Control & Time Attendance Model

FingerTec card technology models are suitable for companies that prefer to use practical, convenient tokens during verification to track, monitor and analyze staff attendance. RFID is the default technology employed, however, Mifare and HID card technologies are also available upon request. Mix and match between the master and slave models for a cost effective IN-OUT access control solution. FingerTec door access master models come with a complimentary copy of the advanced door access software, *Ingress*, and the TimeLine 100 model comes with *TCMS V3* software.



SPECIFICATIONS

MODEL	TimeLine 100	Kadex	m-Kadex	i-Kadex (Slave)	k-Kadex (Slave)
SURFACE FINISHING	Acrylonitrile butadiene styrene (ABS)	Acrylonitrile butadiene styrene (ABS)	Polycarbonate	Polycarbonate	Acrylonitrile butadiene styrene (ABS)
MICROPROCESSOR	400 MHz	400 MHz	400 MHz	Managed by master	Managed by master
MEMORY	8 MB flash memory & 32 MB SDRAM	8 MB flash memory & 32 MB SDRAM	8 MB flash memory & 32 MB SDRAM	Managed by master	Managed by master
ALGORITHM	BioBridge VX 9.0	BioBridge VX 9.0	BioBridge VX 9.0	Managed by master	Managed by master
DIMENSION (L X W X H), mm	190 x 50 x 140	92 x 49 x 137	92 x 29 x 134	55 x 15 x 100	75 x 20 x 115
STORAGE					
• Cards	10000	30000	30000	Storage in master	Storage in master
• Transactions	30000	50000	50000	Storage in master	Storage in master
ENROLLMENT & VERIFICATION					
• Methods	Card & password	Card & password	Card	Card	Card & password
• Card per user ID	1	1	1	Managed by master	Managed by master
• Reading distance, mm	40 ~ 80 (RFID, HID), 30 ~ 50 (Mifare)	40 ~ 80 (RFID, HID), 30 ~ 50 (Mifare)	40 ~ 80 (RFID, HID), 30 ~ 50 (Mifare)	40 ~ 80 (RFID), 30 ~ 50 (Mifare)	40 ~ 80 (RFID), 30 ~ 50 (Mifare)
• Verification time (sec)	< 1	< 1	< 1	Managed by master	Managed by master
CARD TECHNOLOGY					
• RFID: 64-bit, 125kHz	Yes	Yes	Yes	Yes	Yes
• MIFARE: MF1S50/S70, 13.56MHz	Made to order	Made to order	Made to order	Made to order	Made to order
• HID: HID 1325, 26-bit, 125kHz	Made to order	Made to order	Made to order	×	×
COMMUNICATIONS					
• Method	TCP/IP, USB disk <i>(Optional RS232 & RS485)</i>	TCP/IP, RS232, RS485, USB disk	TCP/IP, RS232, RS485, USB disk	Wiegand	Wiegand
• Baud rates	9600 ~ 115200	9600 ~ 115200	9600 ~ 115200	×	×
• Wiegand	×	26-bit input/output	26-bit input/output	26-bit output	26-bit output
OPERATING ENVIRONMENT					
• Temperature (°C)	0 ~ 45	0 ~ 45	0 ~ 45	-10 ~ 70	-10 ~ 70
• Humidity (%)	20 ~ 80	20 ~ 80	20 ~ 80	20 ~ 80	20 ~ 80
• Power input	DC 5V 2A	DC 12V 2A	DC 12V 3A	DC 12V 1A	DC 12V 1A
TIME ATTENDANCE					
• Siren	Built-in and external	×	×	×	×
• Work codes	Yes	Yes	×	×	×
MULTIMEDIA					
• Voice	Yes	Yes	×	×	×
• Display	Black and white	Black and white	×	×	×
• Short messaging	Yes	Yes	×	×	×
• Music playback	×	×	×	×	×
• Movie playback	×	×	×	×	×
• Internal backup battery	×	×	×	×	×
ACCESS CONTROL					
• EM lock driving output	×	DC 12V 3A / relay output	DC 12V 3A / relay output	Managed by master	Managed by master
• Alarm output	×	NO/NC	NO/NC	Managed by master	Managed by master
• Anti passback	×	Yes	Yes	Managed by master	Managed by master

*X = Not Applicable | All master terminals come packaged with FingerTec software.



Fingerprint & Card

Simple Door Access Model

FingerTec non-communicative readers are simple plug-and-play door access terminals that require no additional software to function. Offering fingerprint, card and/or password, these independent readers are suitable for small businesses and homes.



SPECIFICATIONS

MODEL	H3i	s-Kadex
SURFACE FINISHING	Acrylonitrile butadiene styrene (ABS)	Acrylonitrile butadiene styrene (ABS)
TYPE OF SCANNER	Non coated optical scanner	×
MICROPROCESSOR	400 MHz	400 MHz
MEMORY	32 MB flash memory	32 MB flash memory
ALGORITHM	BioBridge VX 10.0	BioBridge VX 10.0
DIMENSION (L X W X H), mm	88 x 25 x 88	88 x 25 x 88
STORAGE		
• Fingerprint templates	200	×
• Cards	500	500
• Passwords	8 sets	8 sets
ENROLLMENT & VERIFICATION		
• Methods	Fingerprint (1:N), card & password	card & password
• Recommended fingerprint per user ID	1	×
• Fingerprint placement	Any angle	×
• Password length (digits)	Max 4	Max 4
• Verification time (sec)	< 1	< 1
• FAR (%)	< 0.0001	×
• FRR (%)	< 1	×
CARD TECHNOLOGY		
• RFID: 64-bit, 125kHz	Yes	Yes
• MIFARE: MF1S50/S70, 13.56MHz	Made to order	Made to order
• HID: HID 1325, 26-bit, 125kHz	×	×
OPERATING ENVIRONMENT		
• Temperature (°C)	0 ~ 45	0 ~ 45
• Humidity (%)	20 ~ 80	20 ~ 80
• Power input	DC 12V 3A	DC 12V 3A
ACCESS CONTROL		
• EM lock driving output	DC 12V/relay output	DC 12V/relay output
• Alarm output	NO only	NO only
• Door sensor	Yes (NO/NC)	Yes (NO/NC)
GROUP VERIFY TYPE		
• Password only	Yes	Yes
• Card only	Yes	Yes
• Fingerprint only	Yes	×
• Fingerprint card or password	Yes	Yes (card & password only)
• Card and password	Yes	Yes
• Fingerprint and password	Yes	×



Two DVDs loaded with Self-Learn Video Guides, Comprehensive Software and useful resources available with every purchase of a FingerTec terminal.

NOTE: Specifications are subject to change. Check <http://product.fingertec.com> for latest product information.



Face Recognition

Access Control & Time Attendance Model

FingerTec advanced face recognition technology offers a contactless mode of verification for time attendance and door access control with optional card technology as well. Scan a face to get accurate verification in split seconds. FingerTec access control and time attendance models come with a complimentary copy of the advanced access control software, *Ingress*, which can be substituted with *TCMS V3* software for customers that mainly require time attendance functions. Suitable for application in areas such as hospitals, labs, workshops, etc.



SPECIFICATIONS

MODEL	Face ID 2	Face ID 3	Face ID 4	Face ID 4d
SURFACE FINISHING	Acrylonitrile butadiene styrene (ABS) & acrylic	Acrylonitrile butadiene styrene (ABS) & acrylic	Acrylonitrile butadiene styrene/ polycarbonate blend	
TYPE OF SCANNER	Hi-res infrared camera & fingerprint scanner	High resolution infrared camera	High resolution infrared camera	High resolution infrared camera
MICROPROCESSOR	800 MHz	800 MHz	800 MHz	800 MHz
MEMORY	256 MB flash memory & 128 MB SDRAM	256 MB flash memory & 128 MB SDRAM	256 MB flash memory & 128 MB SDRAM	256 MB flash memory & 128 MB SDRAM
ALGORITHM	Face BioBridge VX 8.0, FP BioBridge VX9.0/10.0	Face BioBridge VX 8.0	Face BioBridge VX 8.0	Face BioBridge VX 8.0
DIMENSION (L X W X H), mm	207 x 120 x 145	86 x 62 x 218	148 x 148 x 122	148 x 148 x 122
STORAGE				
• Fingerprint templates	10000	×	×	×
• Face templates	1200	1500	800	800
• Cards	10000	10000	10000	10000
• Transaction logs	200000	100000	100000	100000
ENROLLMENT & VERIFICATION				
• Methods	Face (1:1, 1:N), fingerprint (1:1, 1:N), card & password	Face (1:1, 1:N), card & password	Face (1:1, 1:N), card & password	Face (1:1, 1:N), card & password
• Recommended fingerprint per user ID	2	×	×	×
• Fingerprint placement	Any angle	×	×	×
• Verification time – Fingerprint, sec	< 1	×	×	×
• Verification time – Face, sec	< 2	< 2	< 2	< 2
• Fingerprint	FAR < 0.0001%, FRR < 0.1%	×	×	×
• Face	FAR < 0.01%, FRR < 0.1%	FAR < 0.01%, FRR < 0.1%	FAR < 0.01%, FRR < 0.1%	FAR < 0.01%, FRR < 0.1%
CARD TECHNOLOGY				
• RFID: 64-bit, 125kHz	Yes	Yes	Yes	Yes
• MIFARE: MF1S50/S70, 13.56MHz	Made to order	Made to order	Made to order	Made to order
• HID: HID 1325, 26-bit, 125kHz	Made to order	Made to order	×	×
COMMUNICATIONS				
• Method	TCP/IP, RS232, RS485, USB disk (Optional WiFi, GPRS & 3G)	TCP/IP, RS232, RS485, USB disk (Optional WiFi)	TCP/IP, USB disk, USB client (Optional WiFi)	TCP/IP, USB disk, USB client (Optional WiFi)
• Baud rates	9600 ~ 115200	9600 ~ 115200	9600 ~ 115200	9600 ~ 115200
• Wiegand	26-bit output	26-bit input/output	×	×
OPERATING ENVIRONMENT				
• Temperature (°C)	0 ~ 45	0 ~ 45	0 ~ 45	0 ~ 45
• Humidity (%)	20 ~ 80	20 ~ 80	20 ~ 80	20 ~ 80
• Power input	DC12V 3A	DC12V 3A	DC 12V 3A	DC 12V 3A
TIME ATTENDANCE				
• Siren	Built-in (Optional external)	Built-in (Optional external)	Built-in	Built-in (Optional external)
• Work Codes	Yes	Yes	Yes	Yes
• Fast transaction checking	Yes	Yes	Yes	Yes
MULTIMEDIA				
• Greeting voice	Yes	Yes	Yes	Yes
• Display	4.3" 65K color TFT touch screen panel	3.0" 65K color TFT touch screen panel	3.0" 65K color TFT touch screen panel	3.0" 65K color TFT touch screen panel
• Photo-ID	Yes	Yes	Yes	Yes
• Short messaging	Yes	×	Yes	Yes
• Day Light Saving Timer	Yes	Yes	Yes	Yes
• Internal Backup Battery	Yes (DC12V, 2000m Ah)	×	×	×
ACCESS CONTROL				
• EM lock driving output	DC12V / relay output	DC12V / relay output	×	DC 12V / relay output
• Alarm output	NO/NC	NO	×	NO/NC
• Antipassback	×	Yes	×	×

3 Years Warranty



*X = NOT APPLICABLE | ALL MASTER TERMINALS COME PACKAGED WITH FINGERTEC SOFTWARE.



FINGERTEC

Logical Fingerprint

PC Access Model

FingerTec logical access fingerprint readers (OFIS) are designed to work with our single sign-on enterprise software application and developer's tools (SDKs) for integration with select applications. It comes complimentary with the OFIS Gateway software, providing a quicker and safer way to use fingerprints for PC login authentication. OFIS TA for attendance system is also available for purchase.



SPECIFICATIONS

MODEL	OFIS-X	OFIS-Y
ALGORITHM	BioBridge VX 9.0 / VX 10.0	
SUPPORTING OS	32-bit Windows XP, Windows Vista, Windows 7	32/64-bit Windows XP, Windows Vista, Windows 7, Windows 8, Windows Server 2008
PIXEL RESOLUTION	512 dpi (average x, y over the scanning area)	
SCAN CAPTURE AREA, MM	17 x 26	15 x 18
SCAN DATA	8-bit grayscale (256 levels of gray)	
READER SIZE (APPROXIMATE) (L X W X H), MM	87 x 58 x 24	45 x 78 x 40
COMPATIBILITY	USB 1.0, 1.1 and 2.0 (Full speed) specifications	
OS/BROWSER	MS Windows/ MS Internet Explorer (IE 9)	
POWER SUPPLY	5.0V +/- 0.25V USB supply	
OPERATING TEMPERATURE (°C)	0 – 55	0 – 55
OPERATING HUMIDITY (%)	20 – 80 non-condensing	
STANDARD FCC CLASS	FCC Class B, CE, USB	
USAGE	Indoor, home and office use	

FEATURES

- Small form factor
- Excellent scan quality
- Encrypted fingerprint data
- Latent print rejection
- Counterfeit finger rejection
- Rotation invariant
 - Recognize dry, moist, or rough fingerprints
 - Compatible with FingerTec's standalone readers and software products
 - Compatible with Windows XP, Windows Vista, Windows 7, Windows 8 Windows Server 2003 and Windows Server 2008

APPLICATIONS

- Desktop computer security
- Registration station for users
- Mobile PCs
- Custom applications
- Home and office use





Fingerprint Mechanical Lock Model

FingerTec mechanical lock models present advanced and sophisticated fingerprint door locks, suitable for use in important rooms, banks, labs and hotels. By default, RFID card technology is embedded in the models for an added verification option. Each model comes with a complimentary copy of *Ingress* advanced access control software.



SPECIFICATIONS

MODEL	Keylock 7700	Keylock 8800
SURFACE FINISHING	Zinc alloy with brushed nickel effect	Zinc alloy
TYPE OF SCANNER	Optical fingerprint scanner	
MICROPROCESSOR	400 MHz	400 MHz
MEMORY	32 MB flash memory	4 MB flash memory
ALGORITHM	BioBridge VX 10.0	BioBridge VX 9.0
RESOLUTION OF SCANNER (dpi)	560	560
DIMENSION (L X W X H), mm	150 x 93 x 268	150 x 85 x 310
• Thickness of door (mm)	35-70	35-55
• Door latch type	Single tongue (Ky 7700S) Double tongue (Ky 7700D)	Mortise, 3-tongue
• Inner lock switch	Yes	Yes
STORAGE		
• Fingerprint templates	500	500
• Passwords	100	100
• Cards	100	100
• Transactions	30000	30000
ENROLLMENT & VERIFICATION		
• Methods	Fingerprint (1:1, 1:N), card & password	
• Recommended fingerprint per user ID	2	2
• Fingerprint placement	Any angle	Any angle
• Verification time (sec)	< 1	< 1
• FAR (%)	< 0.0001	< 0.0001
• FRR (%)	< 1	< 1
• Password length (digits)	6	8
CARD TECHNOLOGY		
• RFID: 64-bit, 125kHz	Yes	Yes
• MIFARE: MF1S50/S70, 13.56MHz	Made to order	Made to order
• HID: HID 1325, 26-bit, 125kHz	X	Made to order
COMMUNICATIONS		
• Method	USB disk	USB disk
• Baud rates	X	X
• Wiegand	X	X
OPERATING ENVIRONMENT		
• Temperature (°C)	0 ~ 45	0 ~ 45
• Humidity (%)	20 ~ 80	20 ~ 80
• Power input	4 x 1.5V AA battery for 4000 operations	
• Power consumption - static (uA)	< 35	< 40
• Power consumption - activity (mA)	< 150	< 100
• Power consumption - driving (mA)	< 200	< 400
• Antistatic voltage (V)	> 1500	> 1500
• Low battery warning voltage (V)	< 4.5	< 4.67
BACKUP UNLOCK MECHANISM	Battery & mechanical key	

Controller Security Hub for Smart Control

The FingerTec controllers, Ingressus I and II, are designed to provide access control functions for 1 and 2-door environments and Ingressus IV is designed for a 4-door environment. Ingressus can be used in combination with FingerTec slave readers and accessories for a more economical and flexible door access control solution. Each controller comes complimentary with FingerTec's advanced access control software, *Ingress*.



SPECIFICATIONS

MODEL	Ingressus I	Ingressus II	Ingressus IV
BASIC			
• Dimension (L X W X H), mm	186 x 106 x 36		226 x 106 x 36
• Power input	12V DC		
• Operating temperature (°C)	0 - 55		
• Operating humidity (%)	20 - 80		
• CPU	32-bit, 400MHz		
• Flash memory (MB)	128		
• SDRAM (MB)	32		
• Polarity protection	Yes		
STORAGE			
• Fingerprints	3000		
• Cards	30000		
• Passwords	30000		
• Transactions	100000		
COMMUNICATIONS			
• Communications with server	TCP/IP, RS485		
• Quantity of terminal	2	4	4
• Communication with terminals	2 x 26-bit Wiegand input. Each for 1 slave terminal (1 x RS485 input to support RS485 network) (max 2 units)	4 x 26-bit Wiegand input. Each for 1 slave terminal (1 x RS485 input to support RS485 network) (max 4 units)	4 x 26-bit Wiegand input. Each for 1 slave terminal (1 x RS485 input to support RS485 network) (max 8 units)
INPUT			
• Push release button	1	2	4
• Door sensor	1	2	4
• AUX	1	2	4
• Types of AUX input supported	Motion detector, passive DIR detector, curtain passive infrared detector, pet immunity PIR detector, two beam digital active infrared detector, heat detector		
OUTPUT			
• Door lock (12VDC 10A form C relay)	1	2	4
• AUX output (30VDC 2A form C relay)	1	2	4
• Types of AUX output supported	Gas detector and compatible sensors, Piezo strobe siren, electronic siren		
ACCESS CONTROL FEATURES			
• Main features	Door opening time (0-999s), Inter-locking (Ingressus II & IV only), Anti-pass back (Local only), Multi card unlocking, First card unlocking, Time zone (50), Holiday time zone, Permanent door release/lock time zone, Day light saving time zone, Continuous verification of users		
• Security features	Door force open alarm, Door open time out alarm, Fire linkage, Duress alarm, Door status and event (51 types)		

*X = Not Applicable | All master terminals come packaged with FingerTec software.



Hardware Selection Guide

FingerTec has an extensive range of biometric and card products. This guide serves as initial tool for you to compare it against your requirements and budget. Once you have decided on the models you want or if you have any further questions, email us at info@fingertec.com for detailed discussions. FingerTec pledges to make things easy for you, always.

MODEL FEATURE	METHOD				LCD DISPLAY		COMMUNICATION						FUNCTIONALITY		Bundled Software	Price Range
	Fingerprint	Face	Card	Pasword	Black & White	Color	RS232/RS485	TCP/IP	WiFi/GPRS	3G	USB	Wiegand	Time Attendance	Door Access		
Fingerprint Time Attendance Model																
TA300	✓	×	A	✓	✓	×	×	×	×	×	✓	×	✓	×	TCMS V3	★
TA500	✓	×	A	✓	×	✓	×	✓	×	×	✓	×	✓	×	TCMS V3	★
AC100C	✓	×	×	✓	×	✓	A	✓	A	×	✓	×	✓	×	TCMS V3	★★
TA100C	✓	×	×	✓	×	✓	A	✓	A	×	✓	×	✓	×	TCMS V3	★★★
TA100C-R	✓	×	✓	✓	×	✓	A	✓	A	×	✓	×	✓	×	TCMS V3	★★★★
TA200 PLUS	✓	×	✓	✓	×	✓	A	✓	A	A	✓	×	✓	×	TCMS V3	★★★★
TA200 PLUS (PoE)	✓	×	✓	✓	×	✓	A	✓	A (WiFi only)	×	✓	×	✓	×	TCMS V3	★★★★
Fingerprint Access Control & Time Attendance Model																
AC900	✓	×	×	✓	✓	×	✓	✓	×	×	×	✓	✓	✓	Ingress	★★
R2	✓	×	✓	✓	✓	×	✓	✓	×	×	✓	✓	✓	✓	Ingress	★★★★
R3	✓	×	✓	✓	×	✓	✓	✓	×	×	✓	✓	✓	✓	Ingress	★★★★
R2c*	✓	×	✓	×	×	×	RS485 only	×	×	×	×	×	×	×	×	★
H2i	✓	×	✓	×	×	×	RS485 only	✓	×	×	✓	✓	✓	✓	Ingress	★★
Q2i	✓	×	✓	✓	×	✓	✓	✓	A	A	✓	✓	✓	✓	Ingress	★★★★
i-Kiosk 100 Plus	✓	×	✓	✓	×	✓	✓	✓	✓ (WiFi)	×	✓	✓	✓	✓	Ingress	★★★★★
RFID Card Access Control & Time Attendance Model																
TimeLine 100	×	×	✓	✓	✓	×	A	✓	×	×	✓	×	✓	×	TCMS V3	★★★★
Kadex	×	×	✓	✓	✓	×	✓	✓	×	×	✓	✓	✓	✓	Ingress	★★★★
m-Kadex	×	×	✓	×	×	×	✓	✓	×	×	✓	✓	✓	✓	Ingress	★★
k-Kadex*	×	×	✓	✓	×	×	×	×	×	×	×	✓	×	×	×	★
i-Kadex*	×	×	✓	×	×	×	×	×	×	×	×	✓	×	×	×	★
Face Recognition Access Control & Time Attendance Model																
Face ID 2	✓	✓	✓	✓	×	✓	✓	✓	A	A	✓	✓	✓	✓	Ingress	★★★★★
Face ID 3	×	✓	✓	✓	×	✓	✓	✓	A (WiFi only)	×	✓	✓	✓	✓	Ingress	★★★★
Face ID 4	×	✓	✓	✓	×	✓	×	✓	A (WiFi only)	×	✓	×	✓	×	TCMS V3	★★★★
Face ID 4d	×	✓	✓	✓	×	✓	×	✓	A (WiFi only)	×	✓	×	✓	✓	Ingress	★★★★
Fingerprint Mechanical Lock Model																
Keylock 7700	✓	×	✓	✓	✓	×	×	×	×	×	✓	×	✓	✓	Ingress	★★★★
Keylock 8800	✓	×	✓	✓	✓	×	×	×	×	×	✓	×	✓	✓	Ingress	★★★★
Fingerprint Logical Access Model																
OFIS Series	✓	×	×	×	×	×	×	×	×	×	✓	×	×	×	Gateway	★
Fingerprint & Card Simple Door Access Model																
H3i	✓	×	✓	✓	×	×	×	×	×	×	×	×	×	✓	×	★
s-Kadex	×	×	✓	✓	×	×	×	×	×	×	×	×	×	✓	×	★
Controller Security Hub for Smart Control																
Ingressus I	✓	×	✓	✓	×	×	RS485 only	✓	×	×	×	✓	✓	✓	Ingress	★★
Ingressus II	✓	×	✓	✓	×	×	RS485 only	✓	×	×	×	✓	✓	✓	Ingress	★★★
Ingressus IV	✓	×	✓	✓	×	×	RS485 only	✓	×	×	×	✓	✓	✓	Ingress	★★★★



Software Selection Guide

FingerTec

offers a variety of different softwares to suit the different business needs of our clients. With all the different requirements, comparing the different software functions can be a little tricky. So here's a selection guide to help you out with the details, similarities, and differences between our offered solutions.

APPLICATION FEATURE	Functionality	Database Engine	Mobile App	OS/Browser	Hardware	Total Reports	Export Format	Languages	Price
---------------------	---------------	-----------------	------------	------------	----------	---------------	---------------	-----------	-------

WINDOWS APPLICATION

	Advance access control and complete time attendance	MySQL, MS Access	Android and iOS	Windows XP, Server 2003, Server 2008, Windows Vista, Windows 7, Windows 8, Windows 10	AC900, R2, R3, H2i, Q2i, i-Kiosk 100 Plus, Kadex, m-Kadex, Face ID 2/3/4d, Keylock 7700, Keylock 8800, Ingressus I/II/IV	36	CSV, TXT, XLS	Arabic, Simplified Chinese, Traditional Chinese, English, Germany, Hindi, Indonesian, Malay, Portuguese, Russian, Spanish, Thai, Vietnamese	Bundled with hardware models
	Visitor management system	MySQL	×	Safari, Google Chrome, Mozilla Firefox, Internet Explorer	AC900, R2, R3, H2i, Q2i, i-Kiosk 100 Plus, Kadex, m-Kadex, Face ID 2/3/4d, Ingressus I/II/IV	5	PDF	Arabic, Simplified Chinese, Traditional Chinese, English, Hindi, Indonesian, Malay, Portuguese, Spanish, Thai, Vietnamese	Payable
	Complete time attendance	MySQL, MS Access	×	Windows XP, Server 2003, Server 2008, Windows Vista, Windows 7, Windows 8, Windows 10	TA300, TA500, AC100C, TA100C, TA200Plus, Timeline 100, Face ID 4	28	CSV, TXT, XLS	Arabic, Simplified Chinese, Traditional Chinese, English, Germany, Hindi, Indonesian, Malay, Portuguese, Russian, Spanish, Thai, Vietnamese	Bundled with hardware models

CLOUD-BASED APPLICATION

	Advance attendance	MySQL	Android and iOS	Safari, Google Chrome, Mozilla Firefox, Internet Explorer	AC100C, TA100C, TA200Plus, AC900, R2, R3, H2i, Q2i, iKiosk 100 Plus, Timeline 100, Kadex, mKadex, Face ID 2/3/4/4d, Android phones, iPhones	30	CSV, TXT, XLS	All languages (Original + Machine translation)	Subscription
	Security guards and patrol management	MySQL	Android	Safari, Google Chrome, Mozilla Firefox, Internet Explorer	NFC tags and Android phones	6	CSV, TXT, XLS	All languages (Original + Machine translation)	Subscription
	HR Workforce hiring	MySQL	Android and iOS	Safari, Google Chrome, Mozilla Firefox, Internet Explorer	N/A	TBA	CSV, TXT, XLS	All languages (Original + Machine translation)	Subscription
	Leave management	MySQL	Android and iOS	Safari, Google Chrome, Mozilla Firefox, Internet Explorer	N/A	21	CSV, TXT, XLS	All languages (Original + Machine translation)	Subscription
	Visitor registration and management	MySQL	Android and iOS	Safari, Google Chrome, Mozilla Firefox, Internet Explorer	Android phones and iPhones	TBA	CSV, TXT, XLS	All languages (Original + Machine translation)	Subscription
	Mobile workforce handling and management	MySQL	Android and iOS	Safari, Google Chrome, Mozilla Firefox, Internet Explorer	Android phones and iPhones	TBA	CSV, TXT, XLS	All languages (Original + Machine translation)	Subscription
	Cloud video surveillance	MySQL	Android and iOS	Safari, Google Chrome, Mozilla Firefox, Internet Explorer	IP cameras, Android phones and iPhones	4	JPEG	All languages (Original + Machine translation)	Subscription
	Residential and neighbourhood management	MySQL	Android and iOS	Safari, Google Chrome, Mozilla Firefox, Internet Explorer	Android phones and iPhones	10	CSV, TXT, XLS	All languages (Original + Machine translation)	Subscription

SOFTWARE DEVELOPMENT KITS (SDK)

	To integrate FingerTec terminals to any third party system	N/A	N/A	Windows XP, Server 2003, Server 2008, Windows Vista, Windows 7, Windows 8, Windows 10	TA300, TA500, AC100C, TA100C, TA200 Plus, AC900, R2, R3, H2i, Q2i, i-Kiosk 100 Plus, Timeline 100, Kadex, m-Kadex, Face ID 2/3/4/4d	N/A	N/A	N/A	Free for registered developers
	To integrate OFIS scanners with any solutions	N/A	N/A		OFIS scanners	N/A	N/A	English	Free for registered developers
	To integrate Ingressus with any third party access control software	N/A	N/A		Ingressus I, Ingressus II, Ingressus IV	N/A	N/A	English	Free for registered developers
	Online web based platform to consolidate and centralise the database for time attendance	MySQL	N/A	Windows XP, Server 2003, Server 2008, Windows Vista, Windows 7, Windows 8, Windows 10	AC100C, TA100C, TA200 Plus, AC900, R2, R3, H2i, Q2i, i-Kiosk 100 Plus, Timeline 100, Kadex, m-Kadex, Face ID 2/3/4/4d	N/A	N/A	English, Malay, Simplified Chinese, Spanish	Free for registered developers
	To integrate TimeTec solution with any third party systems	N/A	N/A	Safari, Google Chrome, Mozilla Firefox, Internet Explorer	N/A	N/A	N/A	English	Free for registered developers

SOFTWARE TOOLS

	To manage and edit users, faces, fingerprints, logs and terminals' information	MS Access, MSSQL	N/A	Windows XP, Server 2003, Server 2008, Windows Vista, Windows 7, Windows 8, Windows 10	TA300, TA500, AC100C, TA100C, TA200 Plus, AC900, R2, R3, H2i, Q2i, i-Kiosk 100 Plus, Timeline 100, Kadex, m-Kadex, Face ID 2/3/4/4d, Keylock 7700/8800, Ingressus I/II/IV	N/A	TXT, XLS, XML, HTML	English	Bundled with hardware models
	To manage users data and fingerprints information	MS Access, MSSQL	N/A		OFIS scanners and Mifare card writer	N/A	N/A	English	Bundled with hardware models
	Single sign on PC login security	N/A	N/A		OFIS scanners	N/A	N/A	English, Simplified Chinese, Traditional Chinese, Japanese	Bundled with hardware models

We make it easy!

TAP ON FINGERTEC RESOURCES TO BUILD YOUR BUSINESS

RICH RESOURCES



Prepared exclusively for you

Access our microsities to download the latest marketing resources and tips to better your business.

www.fingertec.com/microsites/

DATA MANAGEMENT

As good as it gets

Connect FingerTec terminals to the FCC and centralize data from multiple locations in ONE cloud storage. It's **called cloud-awesomeness!**

fcc.fingertec.com



TRAINING IS COOL

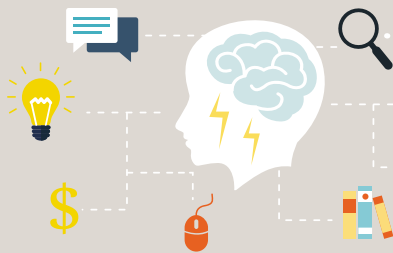


Gym builds muscles, knowledge builds confidence!

We provide FREE training through Webinar, secure your slots and train your clients professionally in no time.

<http://www.fingertec.com/webinar/>

BE THE PRODUCT EXPERT



The trick is to learn

Obtain our rich product info in the website and use the guides we prepare to compare and contrast to suggest the best for your client.

<http://www.fingertec.com/chart/modelselectionguide/>
<http://www.fingertec.com/softwareselectionguide/>

COMM-MUE-NI-CATE

Loud and Clear

Whatever business problems you have, find us, we'll be there for you.

<http://www.fingertec.com/chat/>



INTEGRATE WISELY



We are full of SDKs

And they're FREE; we are giving away SDKs to make your life a little bit easier.

VISUAL GUIDES



Seeing is believing

From corporate videos to concept videos to product videos, get your visual guides in our YouTube channels

www.youtube.com/user/fingertecvideo

SOFTWARE TRIALS

Sharing is caring

Test the software and let your potential customers familiarize and understand the software.



www.fingertec.com is FULL OF TREASURE



The key to unlock the treasure is your curiosity and determination. If you don't find what you need, email us at: editorial@fingertec.com

KEEPING UP WITH FINGERTEC



We talk a lot too!

Subscribe to our newsletters and follow our blogs to know the updates and happenings at FingerTec.

Perk! Compile your database and let us manage your newsletter for you at no cost!



2016 Global Exhibition Schedules

Check out our latest exhibition updates at <http://info.fingertec.com/exhibitions>