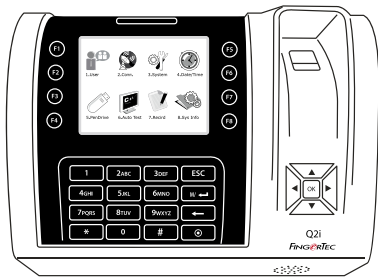


Installation Guide



Q2i
Fingerprint Color Multimedia for
Time Attendance & Door Access Control System

Step 1 Determine the Location and Positioning of the Installation

- Avoid installing the terminals in locations that has contact with a strong light source (e.g direct sunlight, spotlight, fluorescent light, etc)

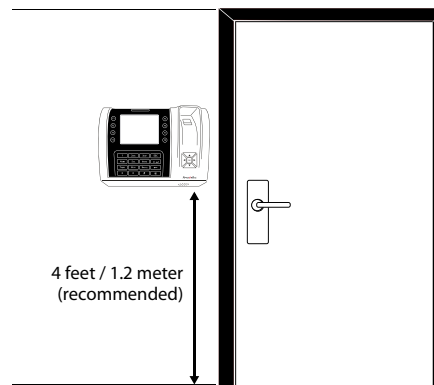


- Avoid installing the terminals in locations prone to high moisture or condensation levels in the air
- The recommended installation height of the terminal from the ground is 1.2 meter.

Step 2 Mounting Terminals

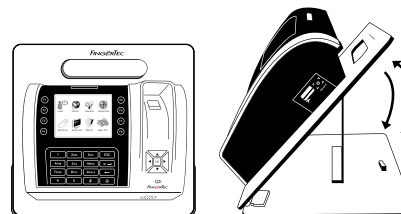
A. MOUNT ON WALL

- After measuring the height accordingly and make relevant marking on the wall, drill the screws into the wall to secure the back plate.
- Attach the terminal to the back plate and tighten the screws. Refer to Appendix II for dimensions and measurements of installation.



B. FLEXI-KIT

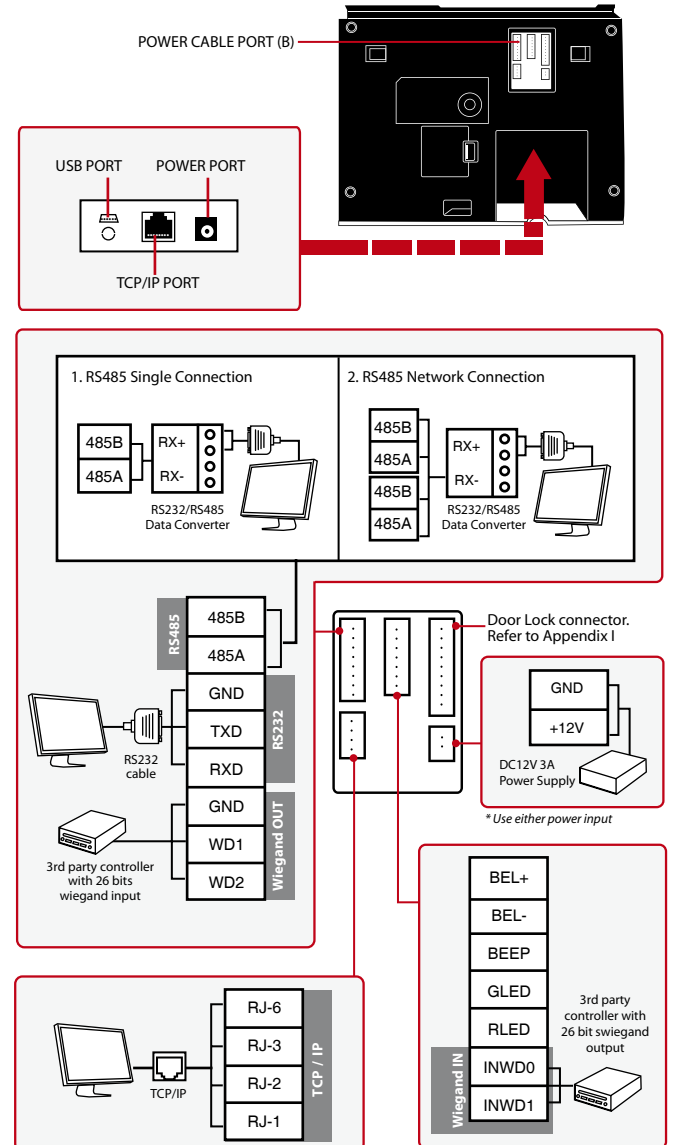
FingerTec offers flexi-kit for all its time attendance models. Attach the terminal on the flexi-kit for convenience.



Step 3 Wiring for Power Supply

There are two ways to connect to the power.

1. Use the power adapter provided in the package and insert the power adapter to the port marked A in the diagram.
2. Use power cables (black and red) to connect to a linear power supply with specifications of 12VDC 3A. (Marked B)



Schritt 4 Einrichten der Datenübertragung

(Überspringen Sie diesen Schritt wenn Sie einen USB-Speicherstick verwenden)

TCP/IP LAN-Verbindung

Für TCP/IP Übertragung, stecken Sie den speziellen RJ45 Stecker in den TCP/IP (LAN)-Anschluss des Terminals. Verbinden Sie das andere Ende (normaler RJ45 Stecker) mit einem lokalen Netzwerk oder einem Computer. Konfigurieren Sie die ID des Terminals, die IP- Adresse, die Subnetzmaske und den Netzübergang in das Terminal. (Für Details sehen Sie in der Bedienungsanleitung des Gerätes nach)

RS232 - Serienschaltung

Für die Verbindung stecken Sie den beigefügten Verbindungsstecker in den TCP/IP (LAN)-Anschluss des Terminals. Wählen Sie Kabel mit der Kennzeichnung RX, TX und GND. Verbinden Sie das andere Ende dieser Kabel mit einer DB9 Anschlussstelle. Konfigurieren Sie die Geräte-ID und Schrittgeschwindigkeit des Terminals. (Für Details sehen Sie in der Bedienungsanleitung Ihres Gerätes nach.) Benutzen Sie das normale RS232 Kabel um es in den RS232-Anschluss des Terminals zu stecken.

RS485 - Serienschaltung

Für die Verbindung stecken Sie den beigefügten Verbindungsstecker in den Übertragungsanschluss des Terminals. Wählen Sie Kabel mit der Kennzeichnung RS485+, RS485- und GND. Verbinden Sie das andere Ende dieser Kabel mit einen RS232/485 Datenumsetzer. Verbinden Sie das andere Ende des Datenumsetzer mit einer DB9 Anschlussstelle. Konfigurieren Sie die Geräte-ID und Schrittgeschwindigkeit des Terminals. (Für Details sehen Sie in der Bedienungsanleitung Ihres Gerätes nach.)

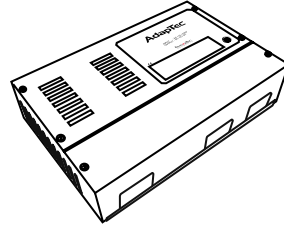
Schritt 5 Abschließen der Installation

1. Prüfen Sie, ob alle Kabelverbindungen korrekt eingesteckt wurden.
2. Befestigen Sie das Terminal an der dazugehörigen Rückplatte und ziehen Sie die Schrauben fest um das Terminal sicher an der Wand zu befestigen.
3. Schalten Sie das Terminal ein.
4. Nun können Sie das Terminal verwenden.

Other Accessories

FingerTec offers complementing accessories which can be used with your terminals. These optional accessories are available at <http://accessory.fingertec.com>

AdapTec AC



The AdapTec AC is a 12VDC power supply inclusive of a 110~240VAC switching linear power. The AdapTec supplies 12VDC power to the FingerTec terminal and door lock system as well as charges a 12VDC 7.0Ah backup battery simultaneously. During an event of a power failure, the back up battery automatically provides power to the terminal and maintains the door lock system. The AdapTec AC also prevents a secured door from being opened if it has been tampered with.



Mini UPS

Mini UPS 12VDC is a mini portable backup power supply with 12VDC output, supplying 12VDC power for FingerTec Door Access & Time Attendance terminals.

Enclosures

An acrylic-made enclosure that protects your terminal from the risk of meddling by unauthorized individuals. Our custom made enclosure are specially designed to fit your terminal perfectly with specific openings for fingerprint scanner and buttons. Our enclosure can be used to mitigate surrounding mild environmental hazards and help lengthen the lifespan of the terminals. However, do note that the enclosure is not dust-resistant and waterproof if subjected to extreme weather conditions.

Flexi Kit

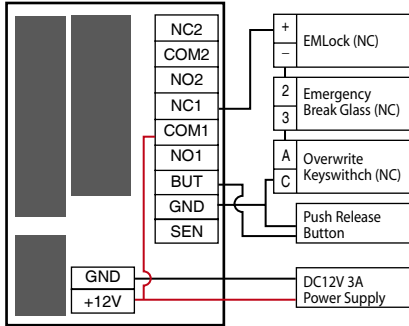
A simple stand which can be used to support your terminal. You can use Flexi-Kit and convert your terminal into a desktop unit. By installing the terminals onto a Flexi-Kit, you do not need to go through the process of mounting your terminals on a wall. The simplicity of the Flexi-Kit's design ensures that it is portable and easy to set up, making it ideal as a demonstration prop too.

Door Lock Accessories

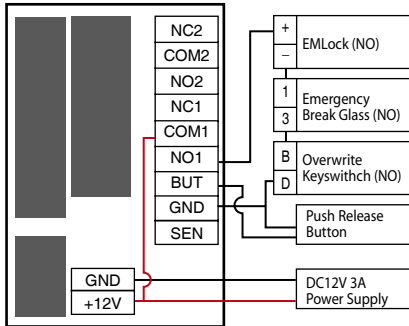
FingerTec offers various door locks accessories to complement FingerTec door access product range.

Appendix I Power Supply & Door Lock System Wiring Diagrams

▶ Diagram 1 • Normally Close (NC)

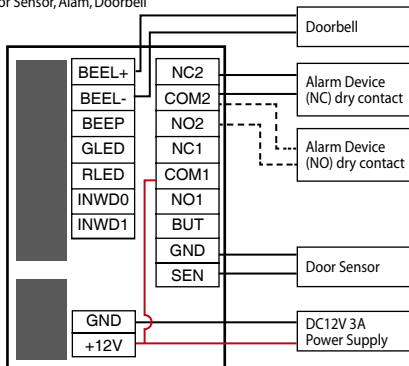


▶ Diagram 2 • Normally Open (NO)



▶ Diagram 3 • Other Accessories

*Door Sensor, Alarm, Doorbell



Use either Type NO or Type NC alarm device.

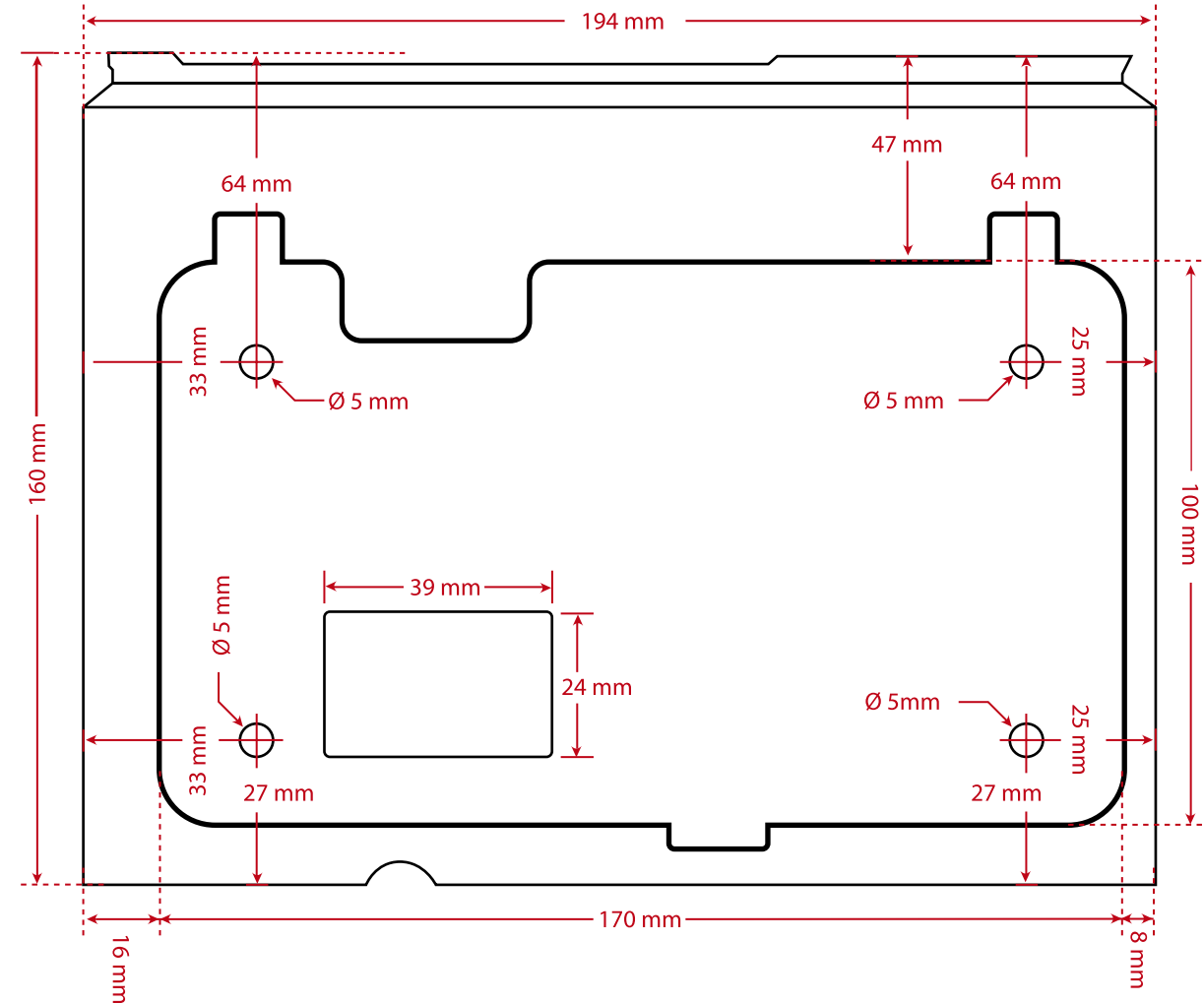
Door Lock Connectors

WIRING PORT	USAGE
NO1	Dry Contact (independ-ent power supply for door lock) • NO type door lock (NO1-COM) • NC type door lock (NC1-COM)
NC1	Power Contact (using power from terminal to power on door lock) • NO type door lock (NO1-GND) • NC type door lock (NC1-GND)
COM1	Dry Contact (independ-ent power supply for door lock) • NO type door lock (NO1-COM) • NC type door lock (NC1-COM)
NO2	Alarm System NO type – NO2-COM2 NC type – NC2-COM2
COM2	
NC2	
SEN	Door Sensor (SEN-GND)
GND	Release button (BUT-GND)
BUT	
Bell+	Door Bell
Bell-	

The terminal will trigger the alarm output (NO or NC) for the follow-ing situations:

- Door forced open (A door sen-sor must first be installed)
- Door open time out (A door sen-sor must first be installed)
- Terminal has been illegally dismantled

Appendix II Terminal Dimensions and Measurements



Front View of Back Plate