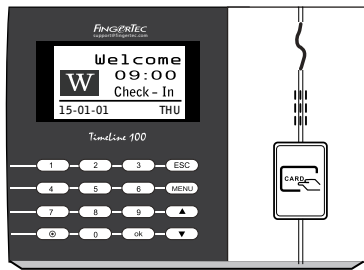


Installation Guide

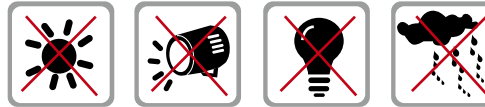


Timeline 100

Standard RFID Card
Time Attendance System

Step 1 Determine the Location and Positioning of the Installation

- Avoid installing the terminals in locations that has contact with a strong light source (e.g direct sunlight, spotlight, fluorescent light, etc)



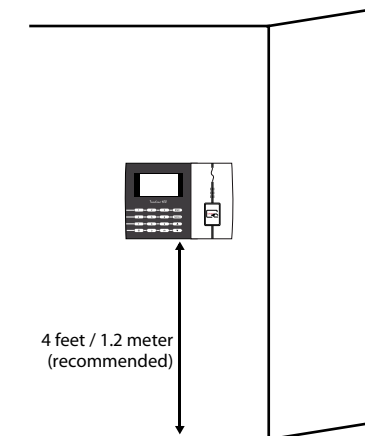
- Avoid installing the terminals in locations prone to high moisture or condensation levels in the air
- The recommended installation height of the terminal from the ground is 1.2 meter.

Step 2 Mounting Terminals

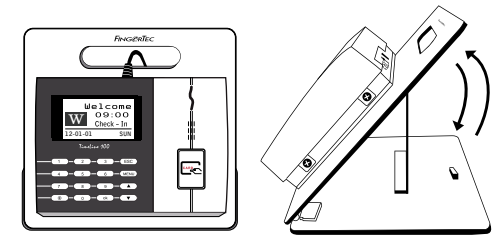
It is recommended that the terminals be mounted to a wall to ease the process of enrolment and verification. In a situation whereby mounting the terminals on a wall is not an option, you can choose to use flexi kit to convert the terminals to desktop units. However, there are limited options for the flexi kit and some terminals might not be suitable to be placed on flexi kits.

A. MOUNT ON WALL

- After measuring the height accordingly and make relevant marking on the wall, drill the screws into the wall to secure the back plate.
- Attach the terminal to the back plate and tighten the screws. Refer to Appendix I for dimensions and measurements of installation.

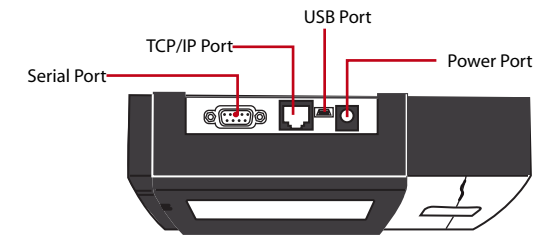


B. FLEXI-KIT



FingerTec offers flexi-kit for all its time attendance models. Attach the terminal on the flexi-kit for convenience.

Step 3 Wiring for Power Supply



The power jack is positioned on top of the terminal, labeled Power Adapter Port in the below diagram.

Please use the power adaptor provided in the package or alternatively you can opt for a linear power supply with specifications of 5VDC 2A. Plug the one point of the power adapter to the terminal and the other end to the power outlet. Don't exceed the recommended voltage or current to avoid damaging the terminal.

Step 4 Setting Up Data Communication

(Skip this step if you are using USB flash disk to transfer data)

TCP/IP – LAN Connection

For TCP/IP connection, plug the special RJ45 jack into the TCP/IP (LAN) Port of the terminal. Connect the other end (normal RJ45 jack) to the local area network hub or a PC. Configure the device ID, IP address, subnet mask and Gateway in the terminal (refer to the hardware user manual for details).

Step 5 Finalizing the Installation

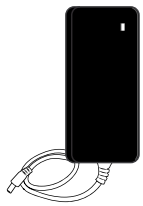
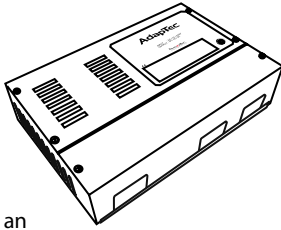
1. Check that all cable connections are done correctly.
2. Attach the terminal to the corresponding back plates and tighten the screws to secure the terminal on the wall.
3. Switch on the power to the terminal.
4. Start using the terminal.

Other Accessories

FingerTec offers complementing accessories which can be used with your terminals. These optional accessories are available at <http://accessory.fingertec.com>

AdapTec TA

The AdapTec TA is a 5VDC power supply inclusive of a 110~240VAC switching linear power. The AdapTec provides 5VDC power to the FingerTec terminal and charges a 12VDC 7.0Ah backup battery simultaneously. During an event of a power failure, the back up battery will automatically provides power to the terminal.



Mini UPS

Mini UPS 5VDC is a mini portable backup power supply with 5VDC output, supplying 5VDC power for FingerTec Time Attendance terminals. Meddled with by unauthorized persons.

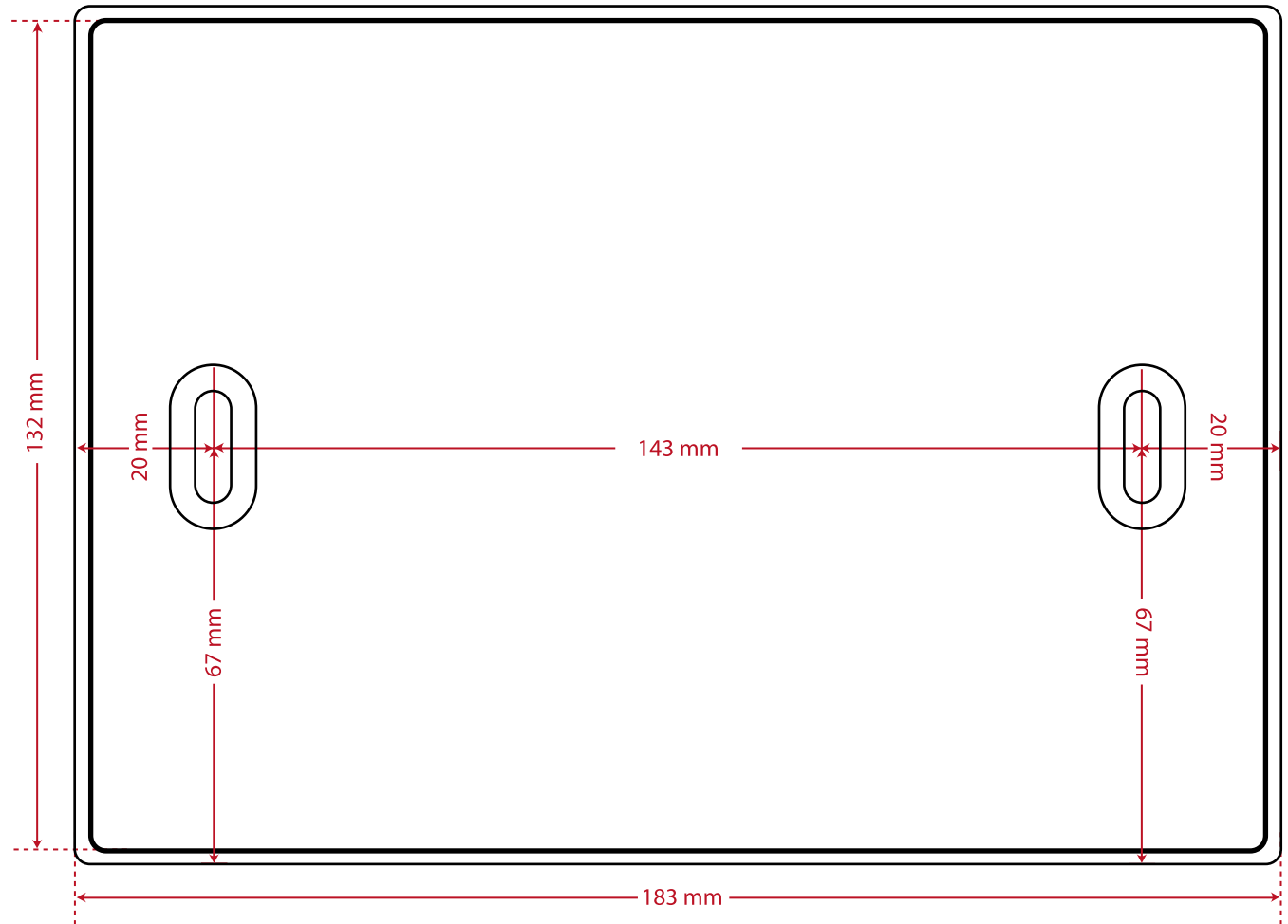
Enclosures

An acrylic-made enclosure that protects your terminal from the risk of meddling by unauthorized individuals. Our custom made enclosure are specially designed to fit your terminal perfectly with specific openings for fingerprint scanner and buttons. Our enclosure can be used to mitigate surrounding mild environmental hazards and help lengthen the lifespan of the terminals. However, do note that the enclosure is not dust-resistant and waterproof if subjected to extreme weather conditions.

Flexi Kit

A simple stand which can be used to support your terminal. You can use Flexi-Kit and convert your terminal into a desktop unit. By installing the terminals onto a Flexi-Kit, you do not need to go through the process of mounting your terminals on a wall. The simplicity of the Flexi-Kit's design ensures that it is portable and easy to set up, making it ideal as a demonstration prop too.

Appendix II Terminal Dimensions and Measurements



Front View of Back Plate