



DOOR/WINDOW MAGNETIC SENSORS

EXCLUSIVE GUARDS TO DEFEND YOUR PREMISES

User Guide

PRODUCT BRIEF

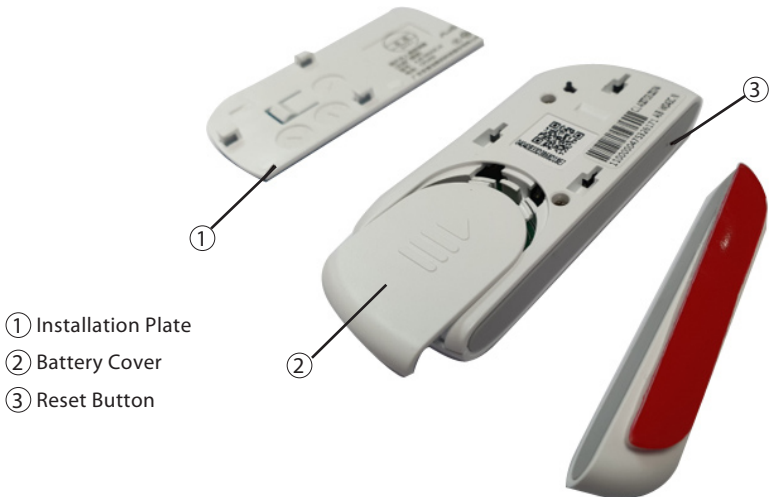


Magnetic alarm sensor is the use of reed switch in the magnet under the action of the principle of deformation, in order to achieve the magnet dislocation alarm terminal system. It is mainly used for doors, windows and other places were invaded real-time alarm, resulting in dislocation alarm signal, the device will trigger the alarm.

PRODUCT SCHEMATIC



- ① Magnet
- ② Status LED
- ③ Sensor



- ① Installation Plate
- ② Battery Cover
- ③ Reset Button

FEATURES

1. Equipment registration

After the TimeTec Smart Gateway Camera is started, use the QR code on the device to scan the device to add the device. After the magnet is dislocated, register it with the camera (be care for the distinction between the shop and the home type).

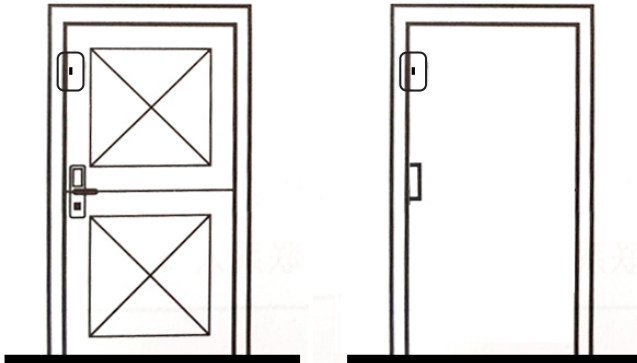
2. Alarm function

In the TimeTec Smart Gateway Camera to add magnetic sensor, in the case of arming, if the magnet dislocation, magnetic sensor will report information to the APP, and trigger intelligent sound and light alarm.

3. Alarm indicator

Magnet dislocation triggers magnetic sensor when the red light flashes on the surface of the device.

INSTALLATION



1. Insert battery into the sensor.
2. Remove the double sided tape.
3. Stick on the door frame and door leaf as illustrated. Make sure the distance between sensor and magnet is less than 15 mm.

F&Q

Q: APP has no alarm after magnet dislocation

A:

1. When the magnetic indicator has no light, it means no successful registration of magnetic sensor; it has to re-add equipment in the APP.
2. When the magnetic indicator light does not shine: battery power or equipment damage, please replace the battery or equipment.

