

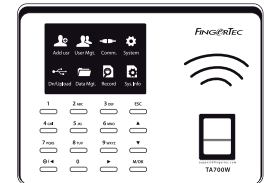


## Quick Start Guide

The Quick Start Guide is intended to provide user with simple instructions on how to setup the terminal date/time and communication as well as to perform fingerprint and card enrollment and verification. For more details on other topics of terminal management, refer to the terminal Hardware User Manual available in the package or online at <http://user.fingertec.com/user-guide.html>

All complete hardware and software user guides are available in the FingerTec DVD and downloadable online at <http://user.fingertec.com>

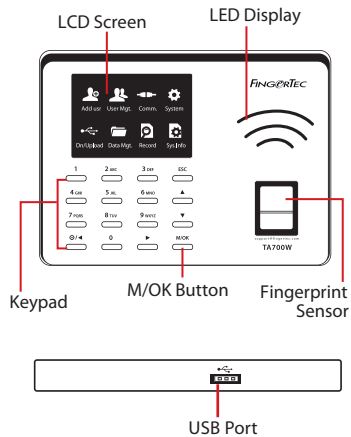
© 2017 Timetec Computing Sdn Bhd. All rights reserved • 032017



TA700W

# Quick Start Guide

# Terminal Overview



## 1 Setting the Date and Time

1. Press **Menu**, select **System**, select **Date/Time** and set the value.
2. Press **OK** to save the settings, then press **ESC** to return to the main screen.

## 2 Enrolling Fingerprints

1. Press **Menu**, select **Add User** icon.
2. Key in a **User ID**, select **Enroll FP** and place the finger on the scanner 3 times according to the instructions.
3. Press **OK** to save then press **ESC**. Press **OK** again, and then **ESC** again to return to the main screen.

## 3 Communication Settings

### Connect To WiFi:

Press **Menu** > **Comm.** > **WIFI setting** > Select **Network Name** > Enter the **WIFI password** > Press **OK** to save.

### Determining the IP address, Subnetmask and Gateway:

For DHCP connection of the terminal to network, **Menu** > **Comm.** > **WIFI setting** > Press **(0)** > Turn DHCP **"On"** > Press **Ok** to save.

To enter the IP setup of the terminal for WIFI connection manually, **Menu** > **Comm.** > **WIFI setting** > Press **(0)** > Turn DHCP **"Off"** > Enter the IP Address, Subnetmask, and Gateway values > Press **OK** to Save.

# Software Roadmap



1

## Installation

The FingerTec software installer is available in a DVD that comes with all FingerTec terminals. Complete the installation.

Default Username: admin  
Default Password: 123

2

## Online Activation

Use the terminal's serial number to activate your software online. Contact your local reseller or [support@fingertec.com](mailto:support@fingertec.com) if you require offline software activation.

3 System Overview

### User Management

Add, delete, edit and manage user information and transaction logs.

### Attendance Calculation Setup

Attendance rules and calculation formulas must be figured out to obtain correct attendance reports.

### Download attendance records from terminals

Retrieve the transaction logs stored in the terminals into the server.

### Check and edit attendance records

Review the records edit / insert / check for missing records.

### Generating attendance reports

Generate professional and presentable reports for analysis.

### Export attendance records for payroll or 3rd party software

Integrate the attendance records retrieved from FingerTec terminals to a relevant 3rd party software/payroll.