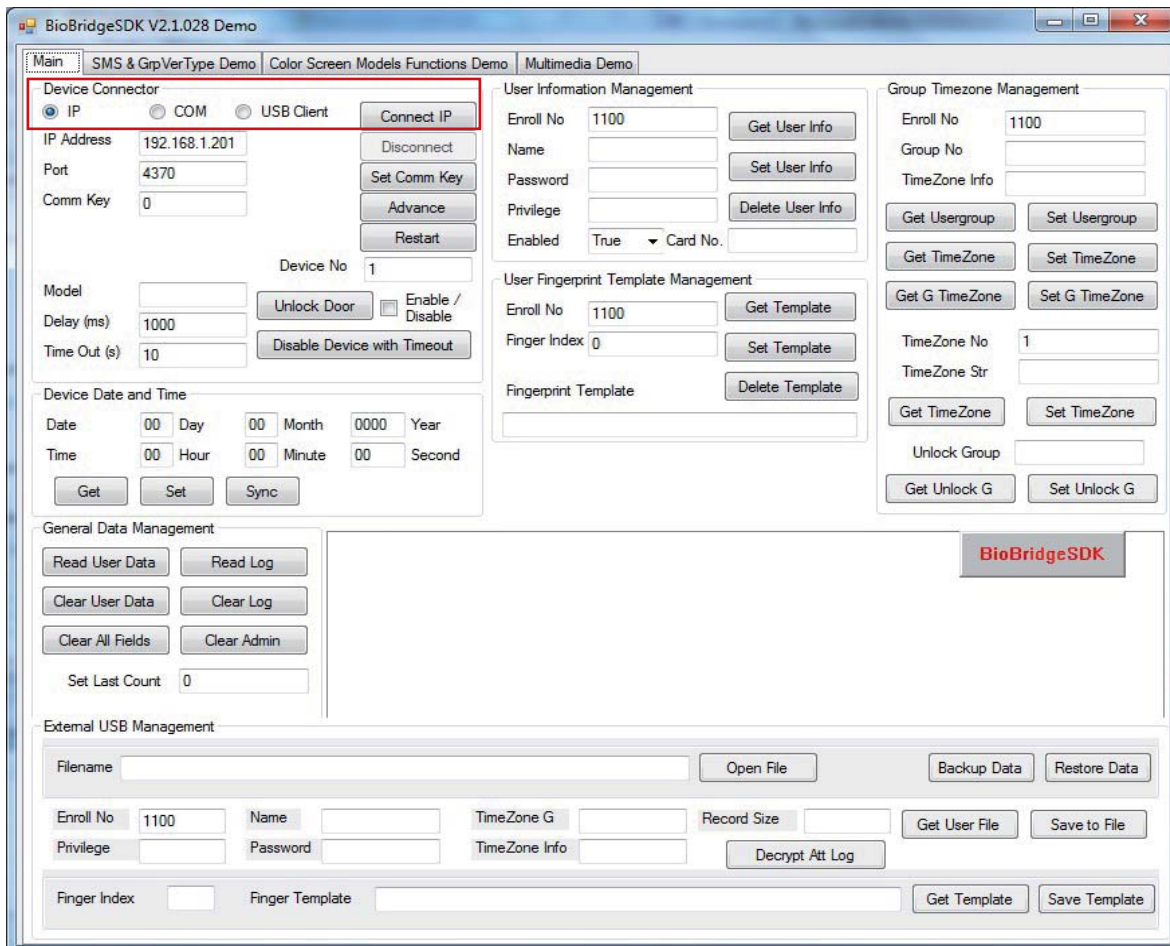


To Connect Your Application to FingerTec Terminal

1. Click the **Connect IP** button to connect with the terminal.



There are 3 ways to connect to FingerTec terminals by using different device connectors:

- IP** – Using IP Address to connect to the terminal.
Function - axBioBridgeSDK1.Connect_TCPIP
- COM** – Using comm port to connect to the terminal.
Function - axBioBridgeSDK1.Connect_COMM
- USB Client** – Using USB flash disk to connect to the terminal.
Function - axBioBridgeSDK1.Connect_USB