



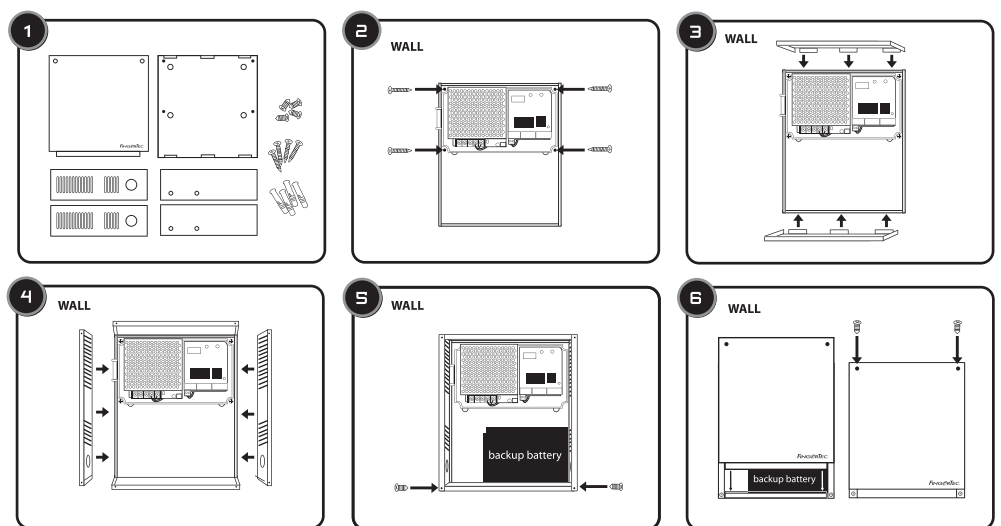
DIY Metal Casing

A little DIY makes a big difference



FingerTec DIY Metal Casing is specially designed based on a Do-it-Yourself concept to house FingerTec AdapTec TA/Plus and backup battery. The casing is made of Zinc Alloy, which is a robust material to hold and protect the inner accessories. It provides a pleasant looking facade when installed on wall, or can be concealed above the ceiling. The DIY design helps to reduce space and absorb impact during transportation.

INSTALLATION GUIDE



SPECIFICATIONS

DIMENSION (mm)	After installed: 210(L) x 75(W) x 250(H)
	Packing box: 220(L) x 22 (W) x 256 (H)
WEIGHT	1.15 Kg
MATERIAL	Zinc Metal

