

Pleasant-Looking with Drop Bolt AL100/AL300

The Drop Bolt AL100/AL300 is a locking system which can be installed either on the floor or on the top of the door frame. When power is applied, a bolt protrudes from the lock and lodges itself into the strike plate which is mounted on the door frame. Optional brackets are available for installers to mount the system on different types of doors. The electric drop bolt is designed to retract when there is a power failure or when the "break-glass" switch is activated. It is an optional feature to link the locking mechanism to the Fire Alarm panel as it involves no linking and maintenance costs.



BENEFITS

- Aesthetically pleasant-looking, as the lock is mounted flush into or onto the frame with nothing protruding outwards. This is a preferred system to be mounted on glass doors and glass doorframes.
- The electric drop bolt will not retract unless the "open button", access control release, or the "break-glass" switch is activated, hence it is a very secured locking system.
- The doors can open in both inward and outward directions.

SPECIFICATIONS

MODEL	AL100	AL300
POWER INPUT	DC12V	
OPERATING CURRENT	900mA	
HOLDING CURRENT	360mA	
DELAY TIME	0/3/9 seconds	
DOOR SWING ANGLE	180°	



OPTIONAL ACCESSORIES

DOOR FRAME BRACKET
Bracket to mount drop bolt on frameless door (w/metal plate)

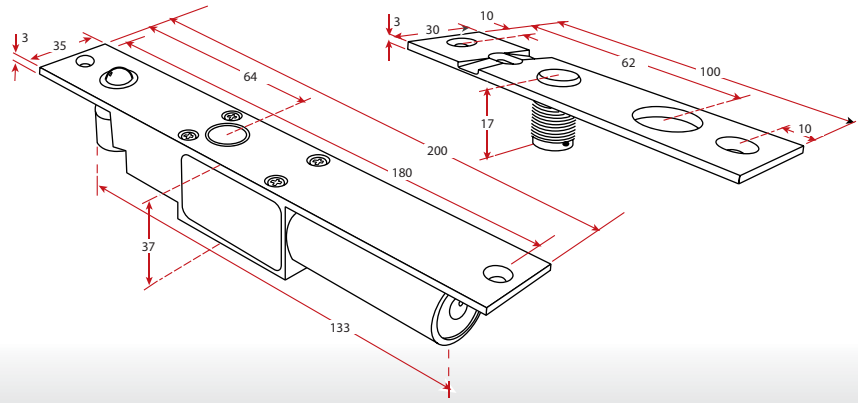


DOOR LEAF BRACKET
Bracket to mount gusset plate on frameless door (w/metal plate)

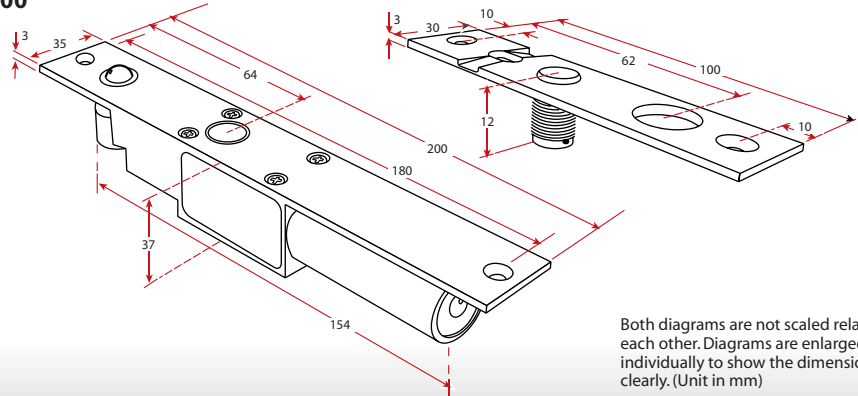


DIMENSION SPECIFICATION

AL100



AL300



Both diagrams are not scaled relative to each other. Diagrams are enlarged individually to show the dimensions clearly. (Unit in mm)

INSTALLATION DIAGRAM

Framed door

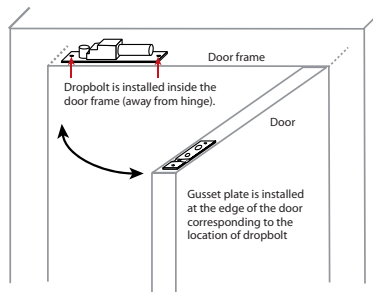


Fig 1: Dropbolt and gusset plate mounting location on framed door

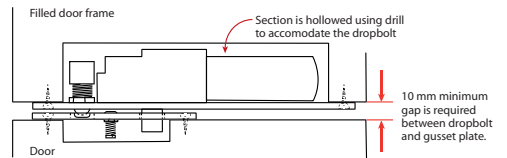


Fig 2: Side cross section diagram when door is closed for filled door frame

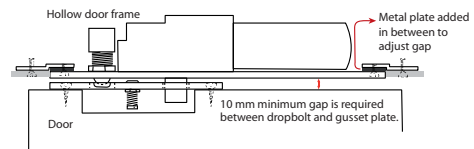


Fig 3: Side cross section diagram when door is closed for hollow door frame

Frameless door

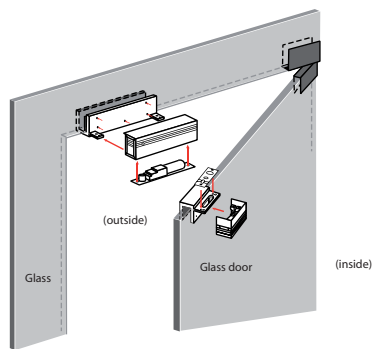


Fig 4: FEC235 and FEC130 bracket mounting on frameless door

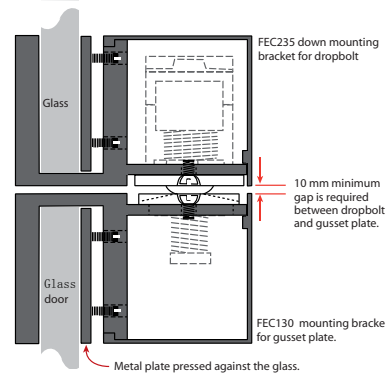


Fig 5: Front cross section diagram when door is closed.

Authorized Reseller: