

# Biometrics Solution for Hotel Locking System



Hotel guests and hotel managements have two major concerns when it comes to choosing a guest room locking system - security and convenience. The system must be foolproof to avoid unauthorized access using the guest cards, and while striving to achieve that, the customer's positive experience cannot be compromised at any cost. The incorporation of a biometric system in a hotel locking system is able to provide both, and at a very attractive price at that. By having a guest's fingerprint data in the room's card, security is brought to another level. No swapping of cards between guests and visitors is possible, hotel personnel's access into the rooms would be better managed by having the personnel's fingerprint available and traceable in the terminals, and the checking-in process for guests would be fast and convenient. FingerTec Biometrics Solution is exclusively designed to meet a hotel lock system requirements.

### No Worries About Lost Keys Fingerprint Mifare Card Writer as Mifare Card Issuance Station

The minute size of the FingerTec MiFare Card Writer makes it easy to place multiple card writers at the front desk for issuance of the Mifare card to hotel guests for extra convenience.

### MiFare Card as Easy as it Gets

Not only is the issuance of MiFare cards easy, but it also provides extra security where the cards are exclusively assigned to particular guests. The cards expire automatically at a default check out date and time to avoid misuse and mismanagement. General master card, building master card, floor master card and fire-alarm cards are available for issuance to different access rights for hotel staff.

### Any other FingerTec models for access control system expansion

The Biometrics Mifare Smartcard system can also be expanded to include public areas such as Swimming Pool, Sauna Room, Tennis Court, Game Room, Meeting Room etc, used in conjunction with an online access control system by using various proximity and biometric readers that are available, incorporating the 26-bit Wiegand format. FingerTec has a variety of readers ranging from simple to advanced, proximity card to fingerprint reading, and even to face recognition.

### Free TCMS V2 Time Attendance and Door Access Software

The TCMS V2 bundled solution is a powerful time attendance and access control software to be used as a time clocking management software for hotel staff and access control if the locking system is extended for larger access control solution.

### Mifare Keylock 8800 as guest room door lockset

The robust ANSI/Euro standard mortise fingerprint Keylock 8800 MF model is a standalone intelligent lock exclusively designed to meet the requirements of Hotels, Guest Houses, and Hall of Residences market. It is programmable to accept only Mifare cards, fingerprints or a combination of both, giving sufficient options to clients.

### BioBridge OFIS SDK for integration to existing Hotel/ Billing Systems

The SDK (System Development Kit) has the ability to interface with mainstream hotel billing/booking software packages. When linked, our software simply runs in the background, allowing key cards to be produced at the front desk easily when guests check in to the hotel. It provides a connection to an encoder to program system cards for their required authority of access. For example, multiple operators with different card-issuing authorization, printing of lock operation records, receptionist card issuing record, guest card expiry control, and optional flexibilities eg. for guest to opt out fingerprint and only use card access feature only.



WEB LINK



• <http://info.fingertec.com/keylock8800-1>  
 • <http://info.fingertec.com/h2i-1>



• <http://info.fingertec.com/keylock8800-2>



• <http://info.fingertec.com/keylock8800-3>



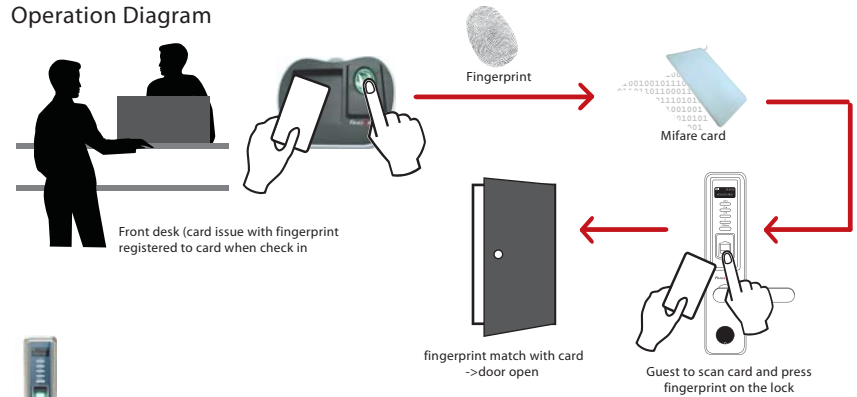
• <http://info.fingertec.com/keylock8800-4>



• <http://info.fingertec.com/keylock8800-5>

INSTALLATION DIAGRAM

Operation Diagram



KEYLOCK 8800 MF

MODEL	Keylock 8800 MF	
SURFACE FINISHING	Zinc Alloy	
TYPE OF SCANNER	Optical	
PROCESSOR, MEMORY	400 MHz microprocessor, 4MB flash memory	
ALGORITHM	BioBridge VX 9.0	
RESOLUTION OF SCANNER (dpi)	560	
PRODUCT DIMENSION (L X W X H), mm	Front panel: 150 x 85 x 310 (with handle)	Back panel: 150 x 80 x 310 (with handle)
STORAGE	70 x 35 x 310 (without handle)	70 x 30 x 310 (without handle)
• Fingerprint templates	500	
• Password	100	
• Transaction logs	30000	
ENROLLMENT & VERIFICATION		
• Methods	Fingerprint (1:1, 1:N), Card & Password	
• Verification time (sec)	< 1	
• FAR (%), FRR (%)	< 0.0001, < 1	
• Length of password (bytes)	8	
CARD TECHNOLOGY		
• MIFARE: MIFISS0/S70, 13.56MHZ	Yes	
COMMUNICATIONS		
• Method	USB flash disk	
OPERATING ENVIRONMENT		
• Temperature (°C)	0 ~45	
• Humidity (%)	20 ~ 80	
• Power input	4 x 1.5V AA Alkaline Battery	
• Power consumption – static (uA), activity (mA), driving (mA)	< 40, < 100, < 400	
• Antistatic voltage (V)	> 1500	
• Low battery warning voltage (V)	< 4.67	
BACKUP UNLOCK MECHANISM	Battery & Mechanical Key	



MIFARE CARD WRITER

MODEL	Mifare Card Writer
SURFACE FINISHING	Acrylonitrile Butadiene Styrene (ABS)
TYPE OF SCANNER	Coated optical scanner
PRODUCT DIMENSION (L X W X H), mm	124.5 x 102 x 34
LENGTH OF USB CABLE (CM)	150
RESOLUTION OF FINGERPRINT (DPI)	500
SCAN DATA	8-bit grayscale (256 levels of gray)
STORAGE	NA
ENROLLMENT & VERIFICATION	Read/Write into Mifare card
COMMUNICATIONS	USB 1.0, 1.1, 2.0
OPERATING ENVIRONMENT	
• Temperature (°C)	0 – 40
• Humidity (%)	20 – 80
• Power input	DC 5.0 +/- 0.25V USB supply
POWER CONSUMPTION	
• Capture fingerprint image (mA)	100
• Idle(mA)	30
• Suspend(mA)	< 0.5
COMPATIBLE OS	Windows 2000, 2003, XP, Vista, Windows 7 (32-bits)



PACKAGING

- 1** Keylock 8800  
 Dimension (mm) : 216(L) x 140(W) x 406(H)  
 Weight : 5kg
- 2** Mifare Card Writer  
 Dimension (mm) : 135(L) x 49(W) x 179(H)  
 Weight : 0.28 kg

Authorized Reseller:



**FINGERTEC**  
[www.fingertec.com](http://www.fingertec.com)

©2011 FingerTec Worldwide Sdn. Bhd. All rights reserved.