



## MiFare Card Writer

*A Simple yet Practical Gadget for MiFare Card System Users*

The MiFare card writer from FingerTec provides you with a base to program and insert fingerprint information into a Mifare card easily. The MiFare card writer comes complete with an SDK which can be integrated with most programming languages like C#, VB.Net, VC++, Delphi, VB 6 and many more. The Mifare card writer makes implementation processes simpler; read on for the Mifare card writer's many advantages!



### Practical Mifare Card Issuance Station

Issue Mifare cards easily with the Mifare card writer; all the user needs to do is place the card and scan a fingerprint! No hassles, no complications!



### Supports Common MS Windows System

The Mifare Card Writer is made compatible with the commonly available Windows Operating Systems including Windows 2000, 2003, XP and Vista.



### Simple User Verification Station

The Mifare card writer comes with a fingerprint scanner that besides enrollment can be used as verification station for time attendance and PC login.



### Comes with extra 5 Mifare cards

A purchase of the Mifare card writer entitles you to 5 free Mifare cards that are compatible with the system.



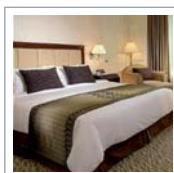
### Simple SDK Provided to Ease Integration with Third Party System

The MiFare Card Writer comes complete with an SDK which can be integrated with most of the programming languages like C#, VB.Net, VC++, Delphi, VB 6 and etc.



### Compatible with all FingerTec MiFare models including Keylock 8800

The fingerprint data derived from the Mifare card writer is compatible with all FingerTec MiFare models including Keylock 8800 Mifare model, a mechanical standalone fingerprint doorlock.



### Viable Biometrics Implementation in Certain Application Scenarios

Availability of the Mifare Card Writer makes biometrics implementation in some complicated application scenarios like hotel guest management, club membership etc.



### Sleek and compact design with USB port

The size of the card writer makes it easy to use and store, providing convenience to all users. The simplicity and practical design of it makes it useful for various functions, as well as makes it user-friendly and self-explanatory. It comes with a USB port for easy application and data transfer.



## System Communication

for illustration only



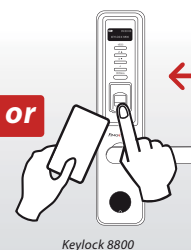
Fingerprints are stored inside the Mifare card after the issuance of the card

### Verification:

- Wave the Mifare card in front of FingerTec Mifare Card terminals
- Place fingerprint on the terminal's scanner to verify
- Verification confirmed and you will be able to gain access



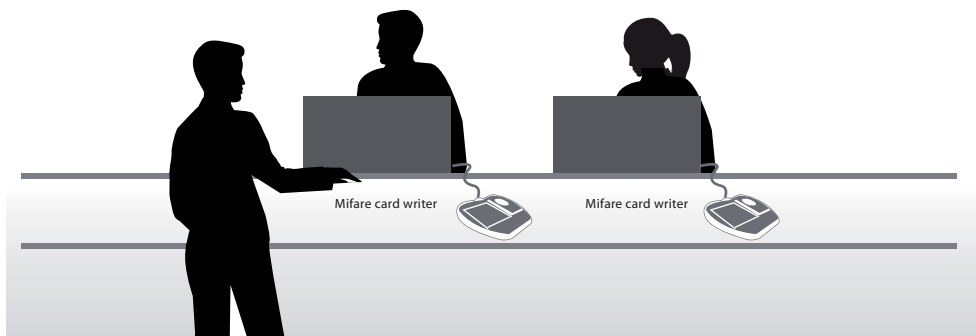
or



## SUGGESTED INSTALLATIONS:

\*Hotel, Fitness clubs, Golf clubs

Installed with OFIS driver, OFIS SDK and Mifare writer SDK free demo



## SPECIFICATIONS

MODEL	Mifare Card Writer
SURFACE FINISHING	Acrylonitrile Butadiene Styrene (ABS)
TYPE OF SCANNER	Coated optical scanner
DIMENSION (MM)	124.5 x 102 x 34
LENGTH OF USB CABLE (CM)	150
RESOLUTION OF FINGERPRINT (DPI)	500
SCAN DATA	8-bit grayscale (256 levels of gray)
STORAGE	NA
ENROLLMENT & VERIFICATION	Read/Write into Mifare card
COMMUNICATIONS	USB 1.0, 1.1, 2.0
OPERATING ENVIRONMENT	
• Temperature (°C)	0 – 40
• Humidity (%)	20 – 80
• Power input	DC 5.0 +/- 0.25V USB supply
POWER CONSUMPTION	
• Capture fingerprint image (mA)	100
• Idle(mA)	30
• Suspend(mA)	< 0.5
COMPATIBLE OS	Windows 2000, 2003, XP, Vista, Window 7 (32-bits)
USAGE	Indoor, Home and Office



### Packaging

Dimension (mm) : 135(L) x 49(W) x 179(H)  
Weight : 0.28 kg



**FINGERTEC**  
www.fingertec.com

© 2011 FingerTec Worldwide Sdn. Bhd. All rights reserved.

Authorized Reseller: