



Double the security economically

R2 & R2c

Door Access & Time Attendance System



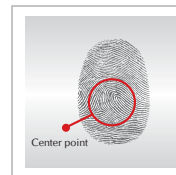
FingerTec R2 empowers biological traits to enhance security in your daily life, as biometrics technology is a proof of real identity. Dubbed as FingerTec's bestselling terminal for access control, the R2 series is the ideal fingerprint system for those looking for security control with practicality. With the combination of R2 and R2c, both entrances and exits are controlled by secured biometrics keys, providing users with absolute comfort and value for money. FingerTec R2 series also offers the most commonly used communication protocols, and is equipped with an additional USB port for easy data transfer.

FingerTec R2 comes with the powerful software for easy data management and presentable reporting. On top of that, FingerTec R2 terminals run on a Linux platform, offering a more flexible operating system to cater to functions customization. Complimentary FingerTec BioBridge SDK is also available upon request for integration with third party software.



Variety of Verification

R2 contains not only fingerprint verification, but also provide other commonly used methods including cards, passwords, and their combinations.



Precise Identity Verification

R2 uses minutiae point matching fingerprint technology, an advanced algorithm to match the stored fingerprint template with the live one to guarantee authenticity.



Complete Access Solution

Install the slave, R2c with R2 to achieve a more secure full biometrics system for your in/out entry/exit door access system to block all unauthorized entries and exits.



Data Management Simplified

FingerTec R2 is equipped with TCP/IP connectivity and when that is not available, a USB flash port can be used to transfer transaction logs into your computer.



Manage Remote Data Easily

With Ingress, manage the data of all your remote doors easily, determine the settings of your access control system and get the details of all the access activities from one central location.



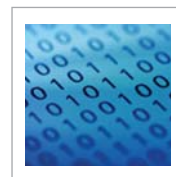
Short Message Display

Communicate with your employee by personalizing a short message to be displayed at the terminal when they verify. The message can be directed to an individual or to a group of staff.



Built In Alarm

R2 allows installation of external alarm to your access system to alert you during emergencies and break-ins. Secure your premise with GroupTimeZone and Group Verify functions.



Workcodes

Let your employee experience independence by reporting their whereabouts via R2 workcode function. Select a workcode listed and scan a finger to verify.



WEB LINK



Product

- <http://info.fingertec.com/r2-1>
- <http://info.fingertec.com/r2c-1>



Quick Start Guide

<http://info.fingertec.com/r2-2>



Installation Guide

<http://info.fingertec.com/r2-3>



User Guide

<http://info.fingertec.com/r2-4>



Video Guide

<http://info.fingertec.com/r2-5>



Technical Tips

<http://info.fingertec.com/r2-6>

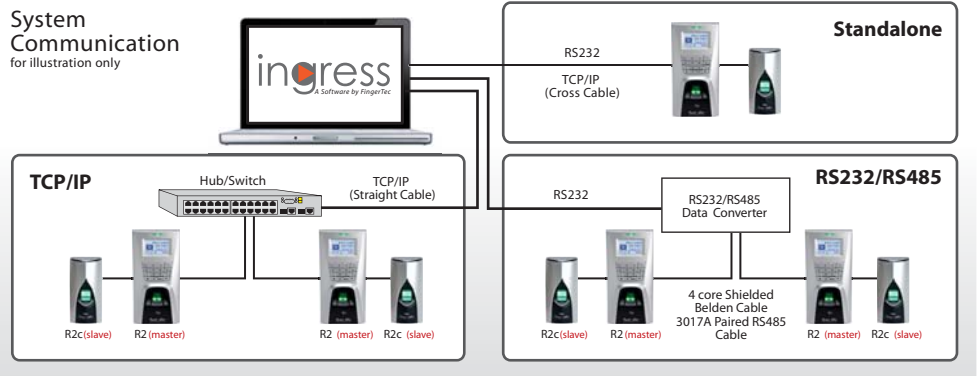


Ingress Software

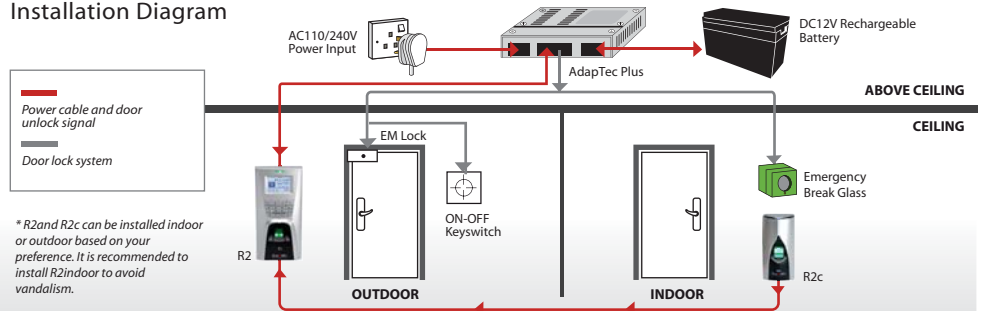
<http://info.fingertec.com/ingress>

LAYOUT PLAN

System Communication for illustration only



Installation Diagram



SPECIFICATIONS

MODEL	R2	R2c (Slave)
SURFACE FINISHING	Acrylonitrile butadiene styrene (ABS)	
TYPE OF SCANNER	Non coated optical scanner	
MICROPROCESSOR	400 MHz	Managed by master
MEMORY	128 MB flash memory & 32 MB SDRAM	
ALGORITHM	BioBridge VX 9.0 / VX 10.0	
PUSH TECHNOLOGY	Yes	N/A
DIMENSION (L X W X H), mm	94 x 50 x 189	64 x 42 x 135
STORAGE		
• Fingerprint templates	3000	Storage in master terminal
• Transactions	120000	
ENROLLMENT & VERIFICATION		
• Methods	Fingerprint (1:1, 1:N), card & password	Fingerprint (1:N) & card
• Recommended fingerprint per user ID	2	Managed by master
• Fingerprint placement	Any angle	
• Verification time (sec)	< 1	Managed by master
• FAR (%)	< 0.0001	
• FRR (%)	< 1	
CARD TECHNOLOGY		
• RFID: 64-bit, 125kHz	Yes	
• MIFARE: MF1S50/S70, 13.56MHz	Made to order	
• HID: HID 1326, 26-bit, 125kHz	Made to order	N/A
COMMUNICATIONS		
• Method	TCP/IP, RS232, RS485, USB disk	RS485
• Baud rates	9600, 19200, 38400, 57600, 115200	N/A
• Wiegand	26-bit input/output	N/A
OPERATING ENVIRONMENT		
• Temperature (°C)	0 ~ 45	
• Humidity (%)	20 ~ 80	
• Power input	DC 12V 3A	Managed by master
TIME ATTENDANCE		
• Work codes	Yes	N/A
MULTIMEDIA		
• Voice	Yes	N/A
• Short messaging	Yes	
ACCESS CONTROL		
• EM lock driving output	DC 12V 3A / relay output	Managed by master
• Alarm output	NO / NC	
• Anti passback	Yes	
VOICE / DISPLAY LANGUAGE (TERMINAL) (only for R2)	English (Standard), Arabic, Indonesian, Traditional (Cantonese), Simplified Chinese, Vietnamese, Spanish, Portuguese (Portugal), Turkish, Persian. Other languages are available upon request.	
SOFTWARE LANGUAGE	Arabic, Bulgarian, Chinese (Simplified), Chinese (Traditional), English, German, Hindi, Indonesian, Kurdish, Malay, Portuguese, Russian, Spanish, Thai, Vietnamese	



Packaging (2 in 1)

Dimension (mm) : 245 (L) x 90 (W) x 225 (H)
Weight : 1.45 kg

*N/A: Not applicable
NOTE: Specifications are subject to change. Check <http://product.fingertec.com> for latest product information.



FINGERTEC
www.fingertec.com

©2016 Timetec Computing Sdn Bhd. All rights reserved.