

**Simplicity in Security
that Affords You
Ease of Mind *s-Kadex***



s-Kadex, the latest addition to the Kadex family is the simplest and most compact electronic card reader from FingerTec yet! This latest automated access control device is able to function without any additional software, making it the perfect stand-alone solution for small businesses and homes where there is no need for tracking attendance. s-Kadex supports card IDs, 4-digit passwords, or a combination of both and despite its small dimension, all of the vital functions from the Kadex family are still present to maximize s-Kadex's value for money. The device's size also enables it to be placed easily in any tight corner, making it a good fit for any situation.



Petite but Packs a Punch

s-Kadex may be small and slim, but it still has enough processing power to ensure quick verification times of less than one second and enough memory to store a whopping 30,000 transactions!



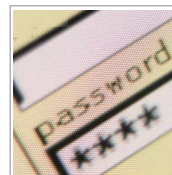
Easy Installation

s-Kadex takes minimal effort to install because of the device's simplicity, and coupled with its compact size, can be easily placed in any location of your choice.



Completely Stand-alone Device

s-Kadex can be used as a stand-alone device for simple access management, making it perfect as a cost-effective and absolutely no-hassle solution for your small business office or home.



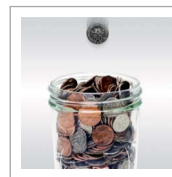
Simple Management & Enrollment

The s-Kadex's simple outlook is complimented with a simple management system. Just key in your administrator password to start enrolling or deleting data.



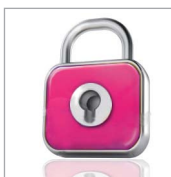
Clear-cut Notification of Events

A buzzer and LEDs are built-in in s-Kadex to provide clear audio and visual notifications during any events that may occur at the device.



Value for Money

Mix and match your FingerTec system with the Kadex family to give you more value for your money. The versatile family of readers will ensure the most cost-effective solution for your situation.



Adaptability for Added Security

s-Kadex is compatible with all 12VDC/relay output electromagnetic locks and can also be connected to an NO alarm to provide added security to your space.



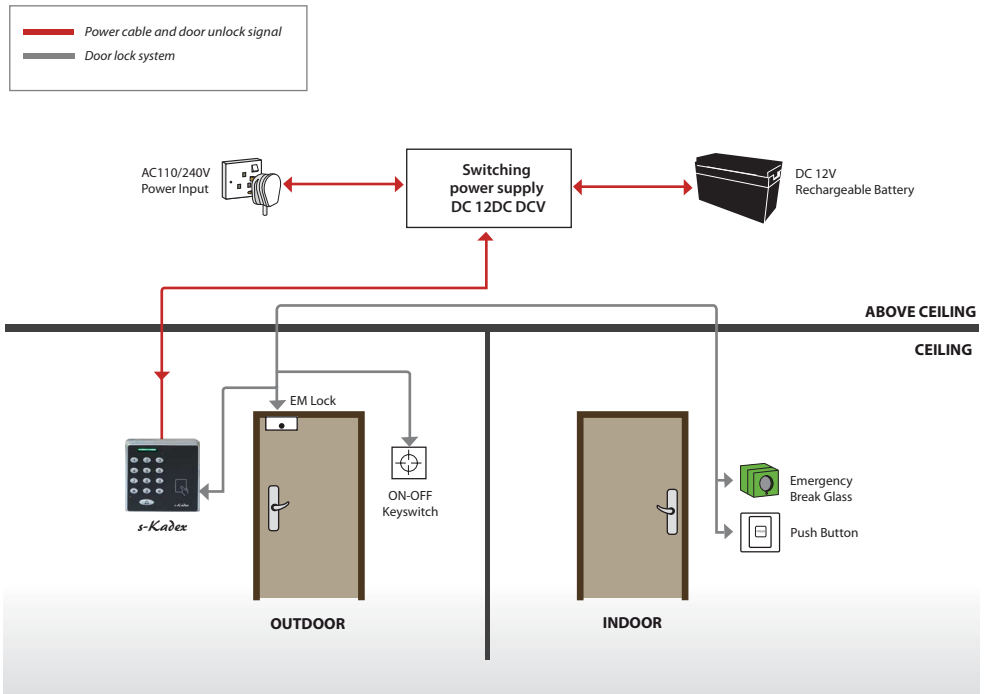
Combine Your Verification Methods

To further secure your space, s-Kadex can accept four different combinations of card (either RFID or MiFARE) or password verification methods according to your preference.



- Product**
<https://product.fingertec.com/userguide.php>
- Installation Guide**
- User Guide**

Installation Diagram



SPECIFICATIONS

MODEL	s-Kadex
SURFACE FINISHING	Acrylonitrile butadiene styrene (ABS)
TYPE OF ANTENNA	Card
MICROPROCESSOR	400 MHz
MEMORY	32MB flash memory
ALGORITHM	BioBridge VX 10.0
DIMENSION (L X W X H), mm	88 x 25 x 88
STORAGE	
Cards	500
Passwords	8 sets (max length(max length 4-digits per password) 4-digits per password)
ENROLLMENT & VERIFICATION	
Methods	Card & password
Password length (digits)	Max 4
Verification time (sec)	<1
CARD TECHNOLOGY	
RFID: 64-bit, 125kHz	Yes
MIFARE: MFISS0/S70, 13.56MHz	Made to order
OPERATING ENVIRONMENT	
Temperature (°C)	0 ~ 45
Humidity (%)	20 ~ 80
Power input	DC 12V 3A
ACCESS CONTROL	
EM lock driving output	DC 12V / relay output
Alarm output	NO only
Door sensor	Yes (NO/NC)
GROUP VERIFY TYPE	
Password only	Yes
Card only	Yes
Card or password	Yes
Card and password	Yes

NOTE: Specifications are subject to change. Check <http://product.fingertec.com> for latest product information.



Packaging
Dimension (mm) : 173 (L) x 60 (W) x 135 (H)
Weight : 0.30 kg

Authorized Reseller:

